

RECEIVED

A. P. #39-101-03
SHT. 1 of 3

JUL 25 1985

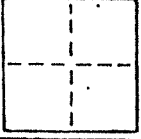
CORNER RECORD

Marin County Public Works

COUNTY OF MARIN T. _____ R. _____ MERIDIAN _____ CALIFORNIA

CORNER TYPE: GOVT. CORNER MEANDER RANCHO CONTROL OTHER

CORNER IDENTIFICATION — DATE OF VISIT _____ 19____



CORNER — LEFT AS FOUND FOUND AND TAGGED REESTABLISHED OBLITERATED CORNER REBUILT

PHYSICAL DESCRIPTION OF CORNER FOUND; EVIDENCE AND METHOD USED TO IDENTIFY OR REESTABLISH

Set 3/4" iron pipe with plastic plug embossed "LS 3775" at position indicated by the arrow per "Map of Seafirth Subdivision in the County of Marin California" recorded in book 8 of Maps at page 12; Marin County Records.

PHYSICAL DESCRIPTION OF MONUMENTS REBUILT OR PERPETUATED

As shown

AP No. 39-101-03

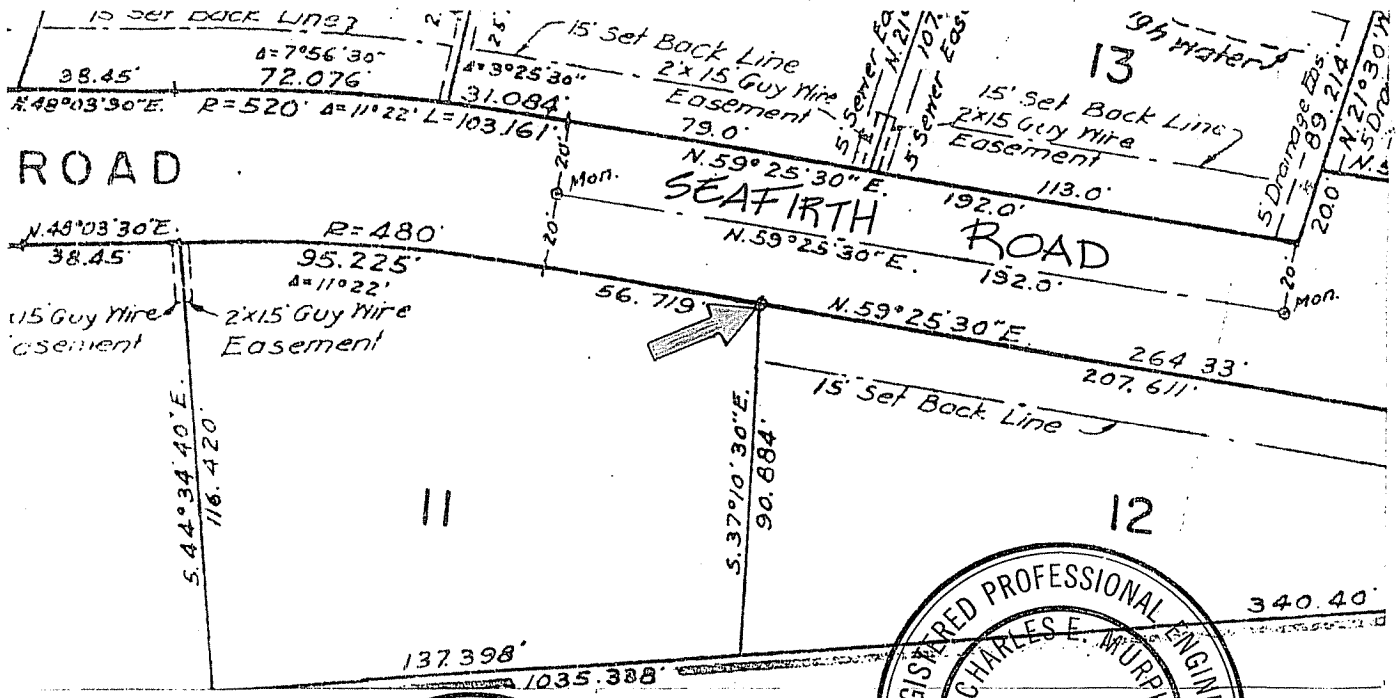
Dreyer J-1405

CALIFORNIA COORDINATE SYSTEM ORDER: FIRST SECOND THIRD

STATIONS USED: NGS (USC & GS) STATE COUNTY OTHER STATION _____ STATION _____

ZONE _____ ELEVATION _____ NORTHINGS (Y) _____ EASTINGS (X) _____

SKETCH: (Include reference tie or witness points, remarks and topo of area)

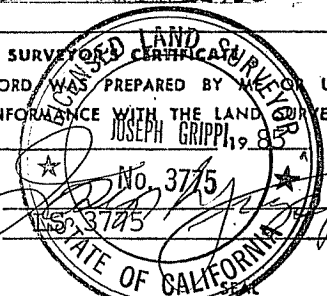


SURVEYOR'S CERTIFICATE

THIS CORNER RECORD WAS PREPARED BY _____ UNDER MY DIRECTION IN CONFORMANCE WITH THE LAND SURVEYORS ACT ON July 23 1985

SIGNED: Joseph Grippi No. 3775

L.S. or R.C.E. No. _____



REGISTERED PROFESSIONAL ENGINEER

CHARLES E. MURPHY

No. 18652

COUNTY SURVEYOR'S CERTIFICATE

THE CORNER RECORD WAS RECEIVED 7-25 1985

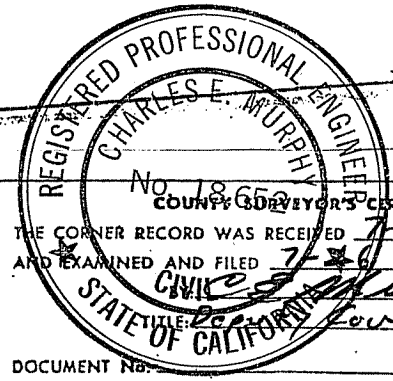
AND EXAMINED AND FILED 7-26 1985

CIVIL ENGINEER

STATE OF CALIFORNIA County Surveyor

DOCUMENT No. _____

STATEMENT ON BACK OF SHEET YES NO



RECEIVED

JUL 25 1985

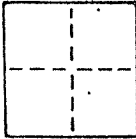
CORNER RECORD

Marin County Public Works

COUNTY OF MARIN T. _____ R. _____ MERIDIAN _____ CALIFORNIA

CORNER TYPE: GOV'T. CORNER MEANDER RANCHO CONTROL OTHER

CORNER IDENTIFICATION — DATE OF VISIT _____ 19____



CORNER — LEFT AS FOUND FOUND AND TAGGED REESTABLISHED OBLITERATED CORNER REBUILT

PHYSICAL DESCRIPTION OF CORNER FOUND; EVIDENCE AND METHOD USED TO IDENTIFY OR REESTABLISH

Set 3/4" iron pipe with plastic plug embossed "IS 3775" at position indicated by the arrow per "Map of Seafirth Subdivision in the County of Marin California" recorded in book 8 of Maps at page 12; Marin County Records.

PHYSICAL DESCRIPTION OF MONUMENTS REBUILT OR PERPETUATED

As shown

AP No. 39-101-03

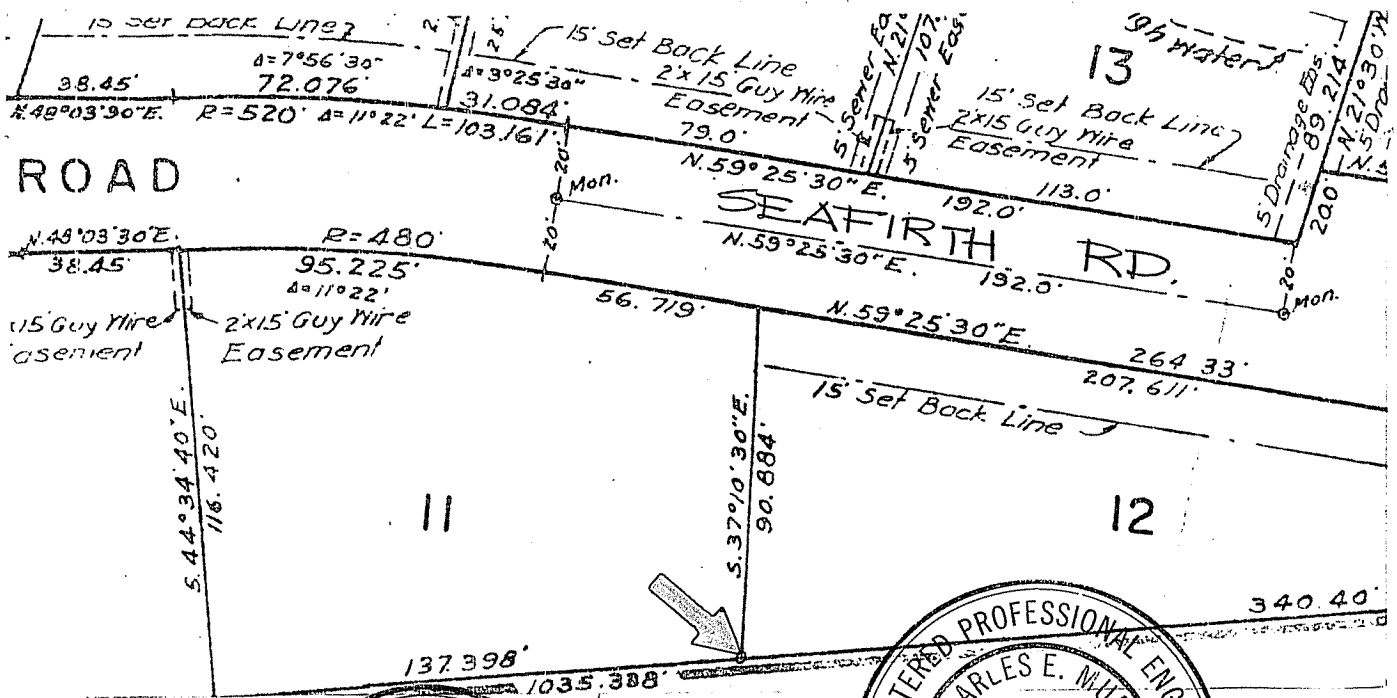
Dreyer J-1405

CALIFORNIA COORDINATE SYSTEM ORDER: FIRST SECOND THIRD

STATIONS USED: NGS (USC & GS) STATE COUNTY OTHER STATION _____ STATION _____

ZONE _____ ELEVATION _____ NORTHINGS (Y) _____ EASTINGS (X) _____

SKETCH: (Include reference tie or witness points, remarks and topo of area)



REGISTERED LAND SURVEYOR'S CERTIFICATE

THIS CORNER RECORD WAS PREPARED BY _____ OR UNDER MY DIRECTION IN CONFORMANCE WITH THE LAND SURVEYORS ACT ON July 23 1985

SIGNED [Signature] No. 3775

L.S. of R.C.E. No. IS 3775

STATE OF CALIFORNIA

REGISTERED PROFESSIONAL ENGINEER

CHARLES E. MURPHY

COUNTY SURVEYOR'S CERTIFICATE

THE CORNER RECORD NO. 18652 RECEIVED 7-25 1985

AND EXAMINED AND FILED 7-26 1985

BY: [Signature]

CIVIL Deputy County Surveyor

STATE OF CALIFORNIA

DOCUMENT NO. _____

STATEMENT ON BACK OF SHEET

YES NO

RECEIVED

JUL 25 1985

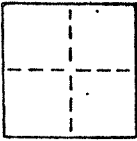
Marin County Public Works

CORNER RECORD

COUNTY OF MARIN T. _____ R. _____ MERIDIAN _____ CALIFORNIA _____

CORNER TYPE: GOVT. CORNER MEANDER RANCHO CONTROL OTHER

CORNER IDENTIFICATION — DATE OF VISIT _____ 19____



CORNER — LEFT AS FOUND FOUND AND TAGGED REESTABLISHED OBLITERATED CORNER REBUILT

PHYSICAL DESCRIPTION OF CORNER FOUND; EVIDENCE AND METHOD USED TO IDENTIFY OR REESTABLISH

Set 3/4" iron pipe with plastic plug embossed "IS 3775" at position indicated by the arrow per "Map of Seafirth Subdivision in the County of Marin California" recorded in book 8 of Maps at page 12; Marin County Records.

PHYSICAL DESCRIPTION OF MONUMENTS REBUILT OR PERPETUATED

As shown

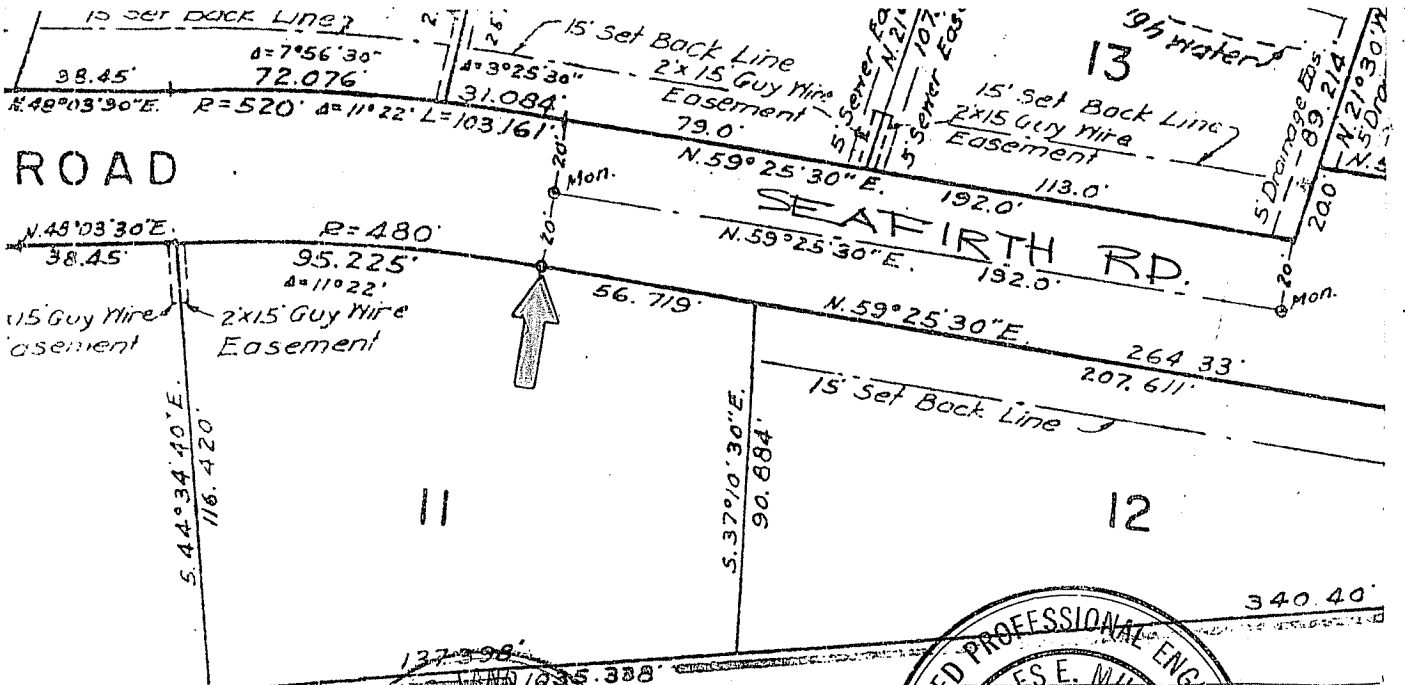
AP No. 39-101-03
Dreyer J-1405

CALIFORNIA COORDINATE SYSTEM ORDER: FIRST SECOND THIRD

STATIONS USED: NGS (USC & GS) STATE COUNTY OTHER STATION _____ STATION _____

ZONE _____ ELEVATION _____ NORTHINGS (Y) _____ EASTINGS (X) _____

SKETCH: (Include reference tie or witness points, remarks and topo of area)

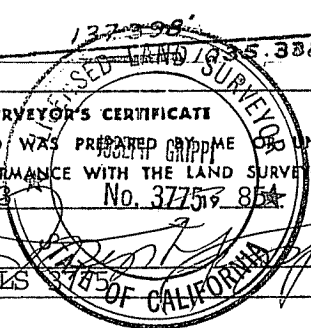


SURVEYOR'S CERTIFICATE

THIS CORNER RECORD WAS PREPARED BY ME OR UNDER MY DIRECTION IN CONFORMANCE WITH THE LAND SURVEYORS ACT ON July 23 No. 3775 85

SIGNED: _____

L.S. or R.C.E. No.: _____



COUNTY SURVEYOR'S CERTIFICATE

THIS CORNER RECORD WAS RECEIVED AND EXAMINED AND FILED BY: _____

TITLE: Deputy County Surveyor

STATE OF CALIFORNIA

DOCUMENT NO. _____

STATEMENT ON BACK OF SHEET

YES NO