

CORNER RECORD

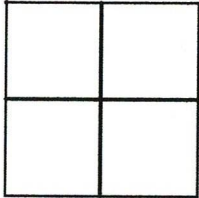
Agency Index CR22-139

Document Number 039-043-20

City of Unincorporated (Tiburon)

County of MARIN, California

Brief Legal Description Westerly line per Lot Line Adjustment I.N. 2008-0044363 (2008 RS 171)



CORNER TYPE

- Government Corner Control
 Meander Property
 Rancho Other

Date of Survey 10/05/2022

COORDINATES (Optional)

N. _____ E. _____
 Elevation _____
 Units Metric U.S. Survey Foot
 Horizontal Datum _____
 Zone _____ Epoch Date _____
 Vertical Datum _____

- Complies with Public Resources Code §§8801-8819
 Complies with Public Resources Code §§8890-8902

PLS Act Ref. 8765(d) 8771 8773 Other:

Corner/Monument: Left as found Established Rebuilt Pre-Construction
 Found and tagged Reestablished Referenced Post-Construction

Narrative of corner identified and monument as found, set, reset, replaced, or removed:
 See sheet #2 for description (s):

SURVEYOR'S STATEMENT

This Corner Record was prepared by me or under my direction in conformance with the Professional Land Surveyors' Act on October 13, 2022

Signed [Signature] P.L.S. or R.C.E. No. 6649



COUNTY SURVEYOR'S STATEMENT

This Corner Record was received October 20, 2022

and examined and filed October 21, 2022

Signed [Signature] P.L.S. [Redacted] No. 8176

Title County Surveyor



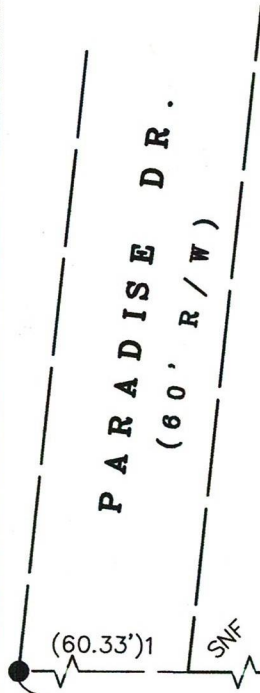
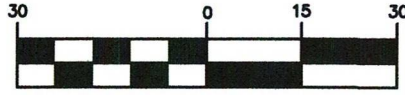
County Surveyor's Comment _____

All distances shown are in feet and decimals thereof

LEGEND

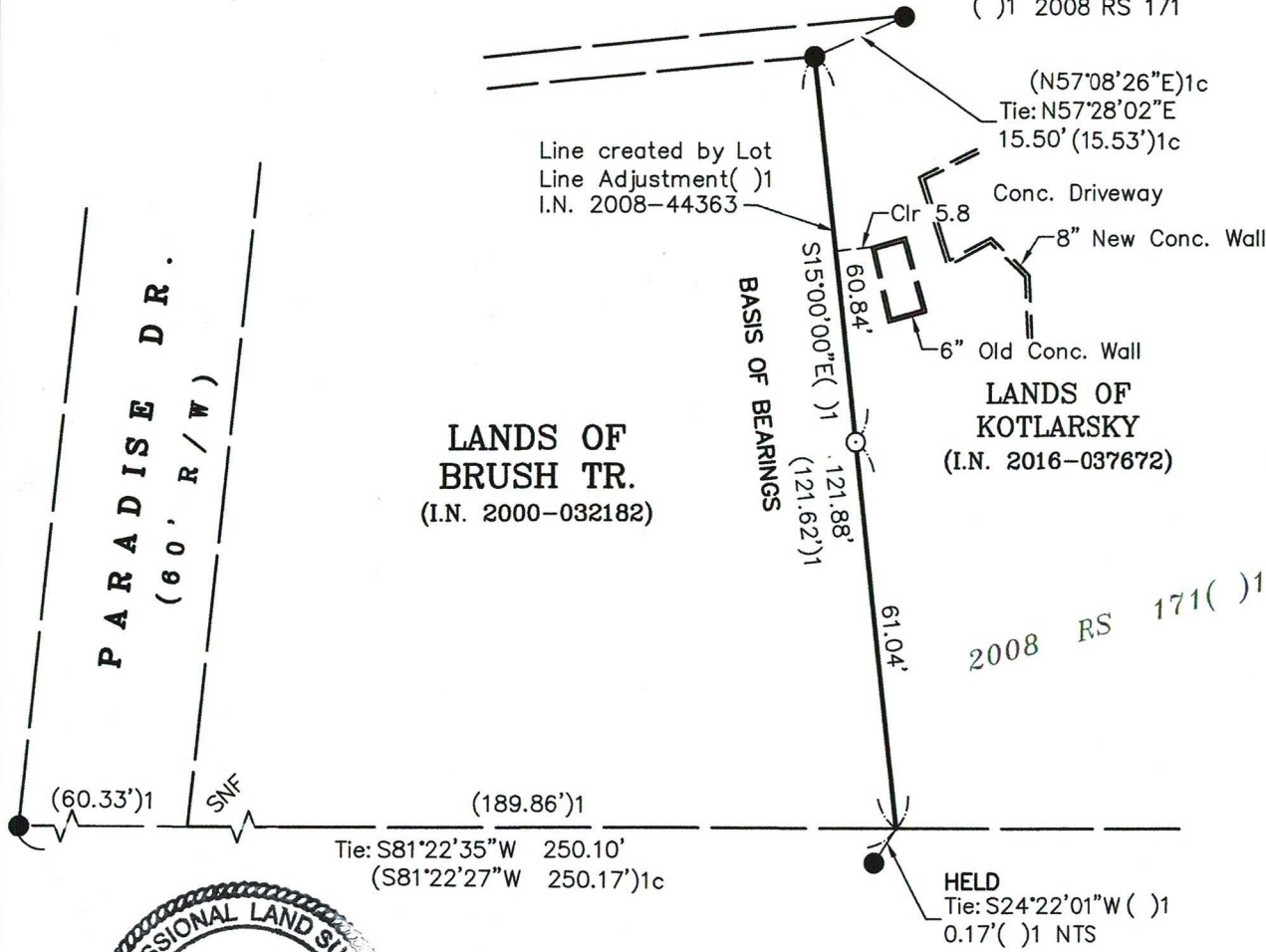
- ✱ Found 1/2" Rebar & Yellow Plastic Cap Stamped "PLS 5379"()1
- Found 3/4" Iron Pipe & Plastic Plug, Stamped "LS 3775"()1
- Set 5/8" Rebar & Punched Aluminum Cap, Stamped "LA STEVENS PLS 6649"
- /—/NTS Not to Scale
- c Calculated Per Record Map
- Clr Clear of Property Line
- SNF Searched Area Nothing Found
- ()1 2008 RS 171

GRAPHIC SCALE



LANDS OF BRUSH TR.
(I.N. 2000-032182)

LANDS OF KOTLARSKY
(I.N. 2016-037672)



10-13-2022

**CORNER RECORD
LANDS OF BRUSH TR.**

(W'y line per IN 2008-44363)
TIBURON

MARIN COUNTY CALIFORNIA
SCALE: 1" = 30' OCTOBER 13, 2022

L.A. Stevens & Associates, Inc.

Professional Land Surveyors * (415) 382-7713
7 Commercial Blvd., Suite 1 * Novato, CA 94949

Job # 222247

Lawrence A. Stevens, PLS 6649

Copyright © Lawrence A. Stevens 2022