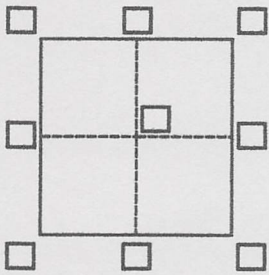


CORNER RECORD

Agency Index DPW # 20-007
Document Number 039-012-10

City of TIBURON County of MARIN, California
Brief Legal Description LOT 4, 6 RM 80



CORNER TYPE

Government Corner Control
Meander Property
Rancho Other

Date of Survey 12/19/19

COORDINATES (Optional)

N. _____ E. _____
Elevation _____
Units Metric U.S. Survey Foot
Horizontal Datum _____
Zone _____ Epoch Date _____
Vertical Datum _____
 Complies with Public Resources Code §§8801-8819
 Complies with Public Resources Code §§8890-8902

PLS Act Ref.: 8765(d) 8771 8773 Other:
Corner/Monument: Left as found Established Rebuilt Pre-Construction
 Found and tagged Reestablished Referenced Post-Construction

Narrative of corner identified and monument as found, set, reset, replaced, or removed:
 See sheet #2 for description(s):

FOUND STREET MONUMENTS PER 6 RM 80, CORNERS PER 2007 RS 70, AND SET 1/2" IRON BARS AND CAP LS 5290, AND NAIL & TAG LS 5290 (SEE CORNER RECORD PLAT, OVER)

SURVEYOR'S STATEMENT

This Corner Record was prepared by me or under my direction in conformance with
the Professional Land Surveyors' Act on January 22, 2020
Signed David Hays P.L.S. or R.C.E. No. P.L.S. 5290

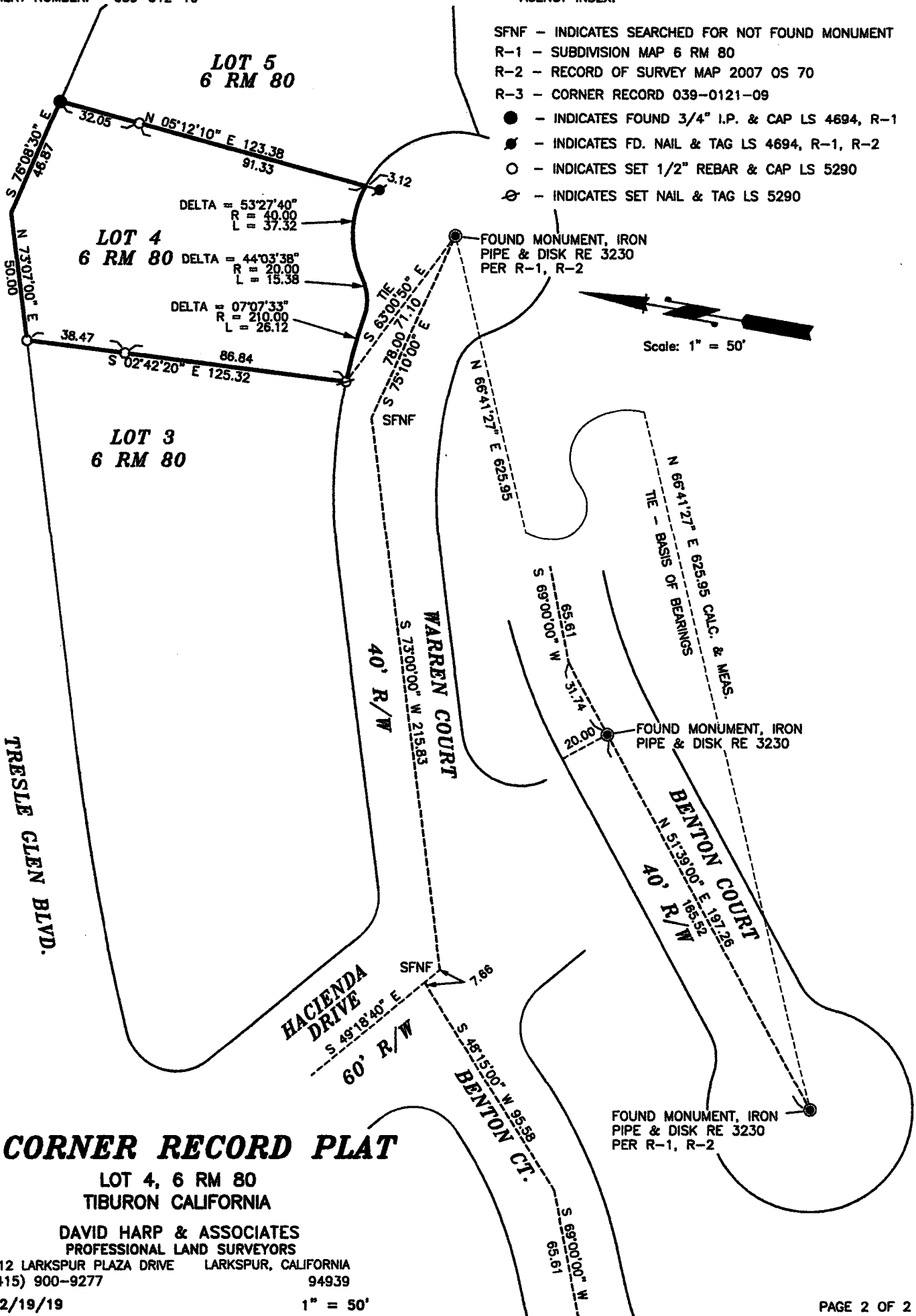


COUNTY SURVEYOR'S STATEMENT

This Corner Record was received _____
and examined and filed APR. 21, 2020
Signed J. H. L. P.L.S. or R.C.E. No. 9292
Title DEPUTY C.S.
County Surveyor's Comment _____



- SFNF - INDICATES SEARCHED FOR NOT FOUND MONUMENT
- R-1 - SUBDIVISION MAP 6 RM 80
- R-2 - RECORD OF SURVEY MAP 2007 OS 70
- R-3 - CORNER RECORD 039-0121-09
- - INDICATES FOUND 3/4" I.P. & CAP LS 4694, R-1
- ⦿ - INDICATES FD. NAIL & TAG LS 4694, R-1, R-2
- - INDICATES SET 1/2" REBAR & CAP LS 5290
- ⊗ - INDICATES SET NAIL & TAG LS 5290



CORNER RECORD PLAT

LOT 4, 6 RM 80
TIBURON CALIFORNIA

DAVID HARP & ASSOCIATES
PROFESSIONAL LAND SURVEYORS

412 LARKSPUR PLAZA DRIVE LARKSPUR, CALIFORNIA
(415) 900-9277 94939

12/19/19

1" = 50'