

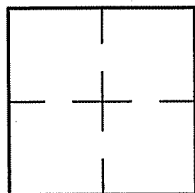
CORNER RECORD

Document Number A.P.# 039-012-09

City of TIBURON

County of MARIN, California

Brief Legal Description A PORTION OF LOT 5, 6 R.M. 80, AS SHOW ON 2007 O.S. 70



CORNER TYPE COORDINATES (Optional)

Government Corner Control
Meander Property
Rancho Other
Date of Survey 12/23/08

N. _____
E. _____
Zone _____ NAD27 NAD83
NAD83 Epoch _____
Elev. _____
Vert. Datum: NGVD29 NAVD88
Meas. Units: Metric Imperial

Corner- Left as found Found and tagged Established Reestablished Rebuilt

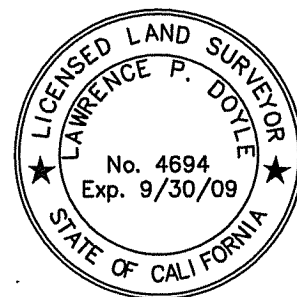
Identification and type of corner found: Evidence used to identify or procedure used to establish or reestablish the corner:
REESTABLISHED THE LINE BETWEEN LOTS 4 & 5 PER 6 R.M. 80, BASED UPON POINTS PER 6 R.M. 80
AND 2007 O.S. 70, AS SHOWN ON SHEET 2.

A description of the physical condition of the monument as found and as set or reset: SEE SHEET 2.

SURVEYOR'S STATEMENT

This Corner Record was prepared by me or under my direction in conformance with
the Land Surveyor's Act on DECEMBER 23 2008

Signed Lawrence P Doyle P.L.S. or R.C.E. No. P.L.S. 4694



COUNTY SURVEYOR'S STATEMENT

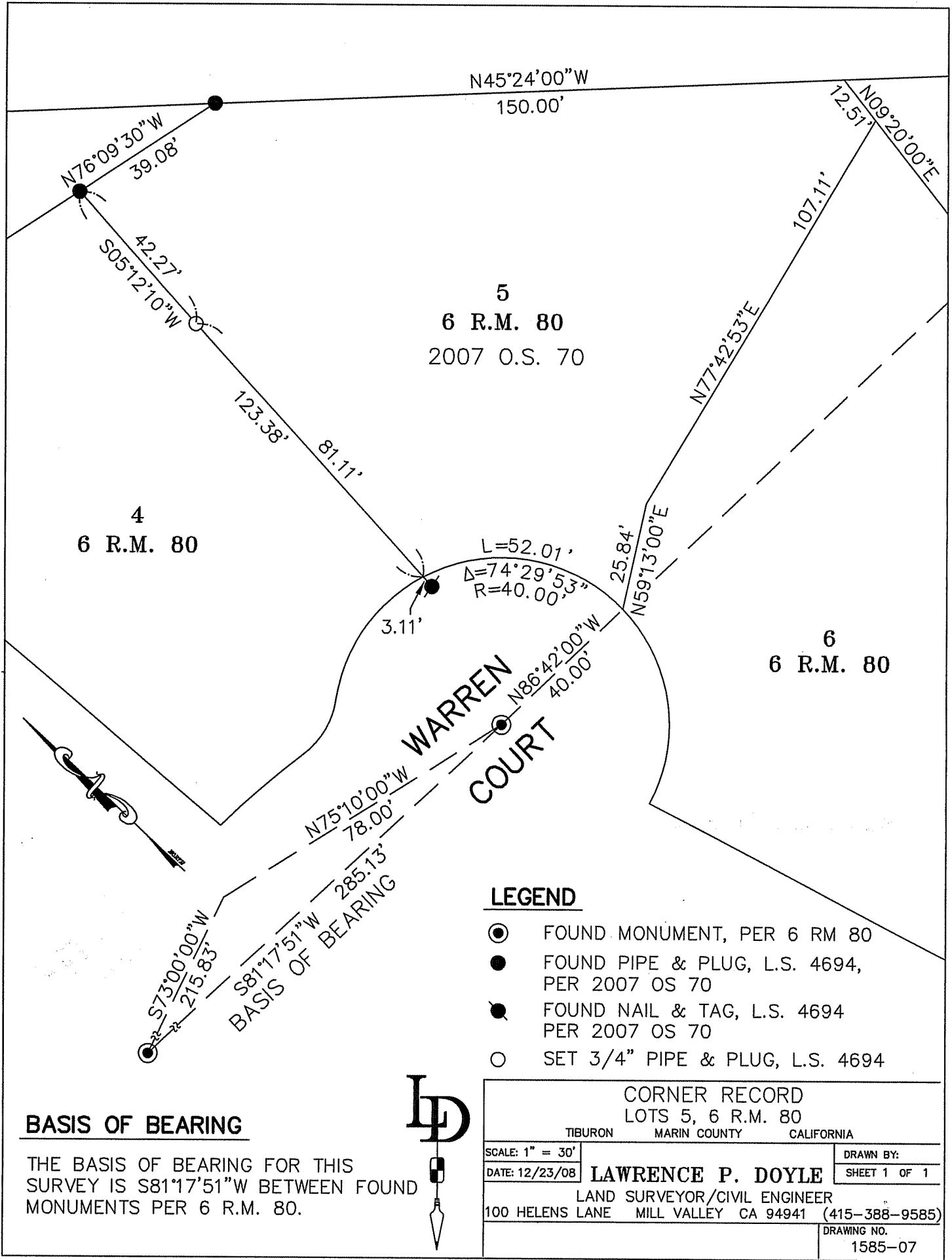
This Corner Record was received DECEMBER 29, 2008
and examined and filed FEBRUARY 9, 2009

Signed [Signature] P.L.S. or R.C.E. No. 7128

Title COUNTY SURVEYOR



County Surveyor's Comment _____



4
6 R.M. 80

5
6 R.M. 80
2007 O.S. 70

6
6 R.M. 80

L=52.01'
Δ=74°29'53"
R=40.00'

WARREN COURT

LEGEND

- FOUND MONUMENT, PER 6 RM 80
- FOUND PIPE & PLUG, L.S. 4694, PER 2007 OS 70
- FOUND NAIL & TAG, L.S. 4694 PER 2007 OS 70
- SET 3/4" PIPE & PLUG, L.S. 4694

BASIS OF BEARING

THE BASIS OF BEARING FOR THIS SURVEY IS S81°17'51"W BETWEEN FOUND MONUMENTS PER 6 R.M. 80.



CORNER RECORD		
LOTS 5, 6 R.M. 80		
TIBURON	MARIN COUNTY	CALIFORNIA
SCALE: 1" = 30'	LAWRENCE P. DOYLE	DRAWN BY:
DATE: 12/23/08		SHEET 1 OF 1
LAND SURVEYOR/CIVIL ENGINEER		
100 HELENS LANE MILL VALLEY CA 94941 (415-388-9585)		
		DRAWING NO. 1585-07