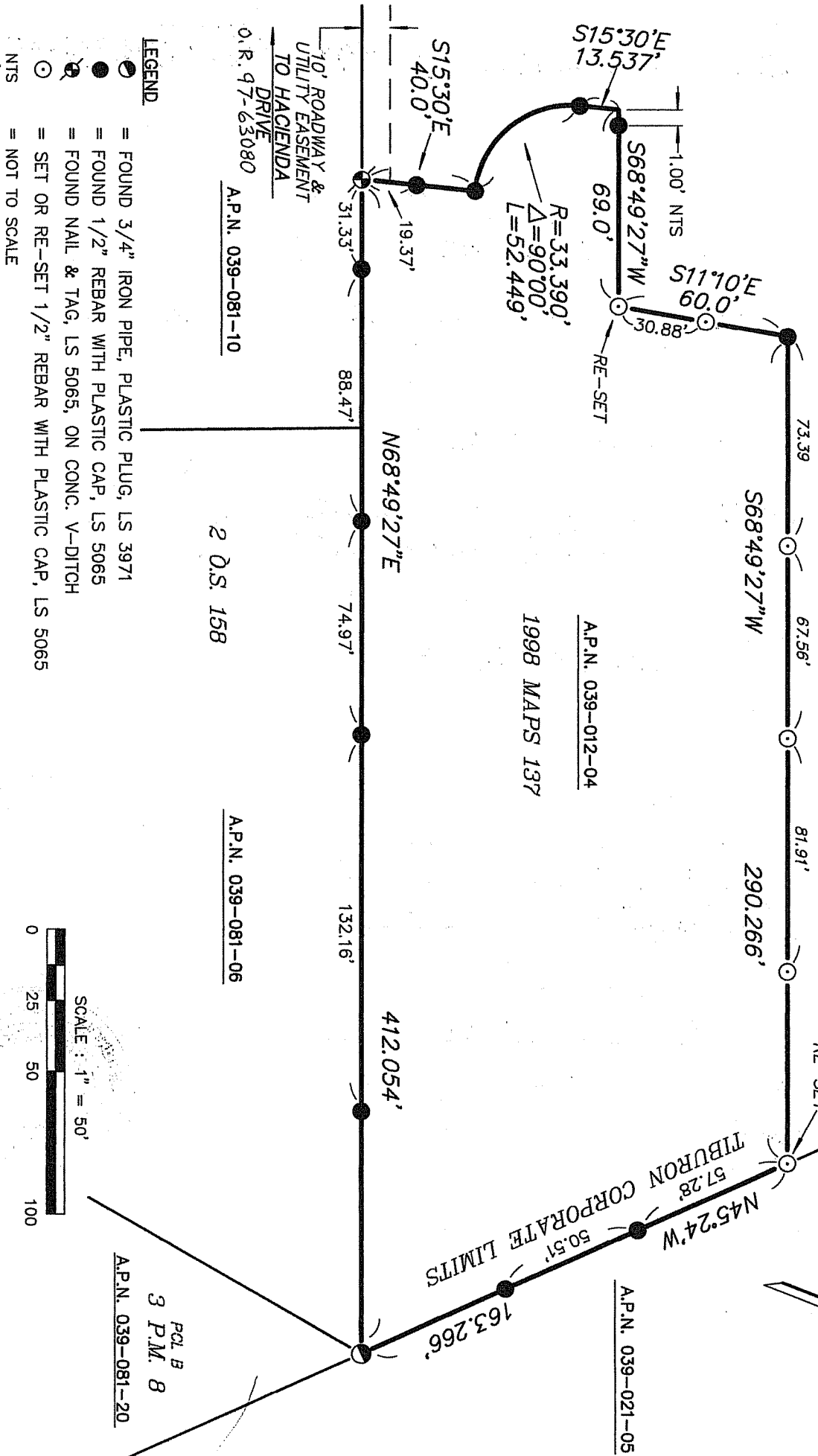


A.P.N. 039-012-22



10' ROADWAY &
UTILITY EASEMENT
TO HACIENDA
DRIVE
O.R. 97-63080
A.P.N. 039-081-10

2 Q.S. 158

1998 MAPS 137

A.P.N. 039-012-04

A.P.N. 039-081-06

A.P.N. 039-021-05

A.P.N. 039-081-20

PCL B
3 P.M. 8

- LEGEND**
- = FOUND 3/4" IRON PIPE, PLASTIC PLUG, LS 3971
 - = FOUND 1/2" REBAR WITH PLASTIC CAP, LS 5065
 - = FOUND NAIL & TAG, LS 5065, ON CONC. V-DITCH
 - ⊙ = SET OR RE-SET 1/2" REBAR WITH PLASTIC CAP, LS 5065
 - NTS = NOT TO SCALE

