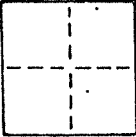


**CORNER RECORD**

COUNTY OF MARIN T. \_\_\_\_\_ R. \_\_\_\_\_ MERIDIAN \_\_\_\_\_ CALIFORNIA  
 CORNER TYPE: GOV'T. CORNER  MEANDER  RANCHO  CONTROL  OTHER   
 CORNER IDENTIFICATION — DATE OF VISIT \_\_\_\_\_ 19\_\_\_\_



CORNER — LEFT AS FOUND  FOUND AND TAGGED  REESTABLISHED OBLITERATED CORNER  REBUILT

PHYSICAL DESCRIPTION OF CORNER FOUND; EVIDENCE AND METHOD USED TO IDENTIFY OR REESTABLISH

Set a 3/4" iron pipe with plastic plug embossed "LS 3775" at the northwesterly corner of Lot 12 "Hacienda Terrace Unit 1" recorded in book 6 of Maps at page 80, Marin County Records, by and per said map.

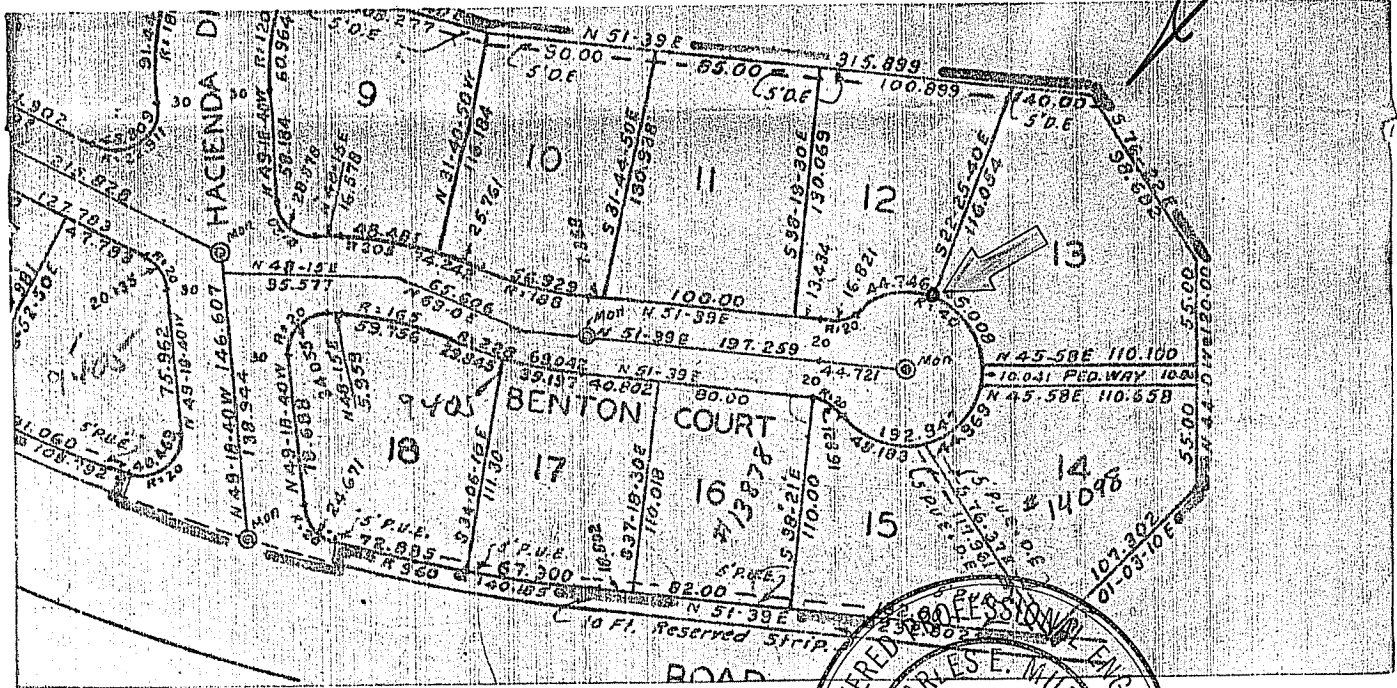
PHYSICAL DESCRIPTION OF MONUMENTS REBUILT OR PERPETUATED

As shown

J 1435 Webster  
AP No. 39-011-09

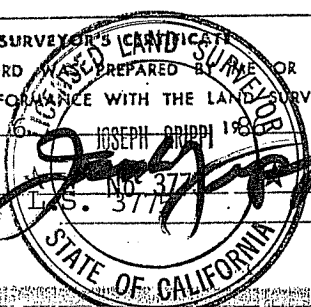
CALIFORNIA COORDINATE SYSTEM ORDER: FIRST  SECOND  THIRD   
 STATIONS USED: NGS (USC & GS)  STATE  COUNTY  OTHER  STATION \_\_\_\_\_ STATION \_\_\_\_\_  
 ZONE \_\_\_\_\_ ELEVATION \_\_\_\_\_ NORTHINGS (Y) \_\_\_\_\_ EASTINGS (X) \_\_\_\_\_

SKETCH: (Include reference tie or witness points, remarks and topo of area)



SURVEYOR'S CERTIFICATE  
 THIS CORNER RECORD PREPARED BY ME OR UNDER MY DIRECTION IN CONFORMANCE WITH THE LAND SURVEYORS ACT ON January 8 1986  
 BY: Joseph Crispi

SIGNED: [Signature]  
 L.S. or R.C.E. No. LS. 377



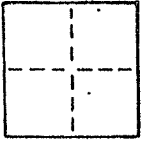
REGISTERED PROFESSIONAL SURVEYOR  
 CHARLES E. MURPHY  
 Exp. 6-30-1986  
 COUNTY SURVEYOR'S CERTIFICATE  
 THE CORNER RECORD WAS RECEIVED Jan 8 1986  
 AND EXAMINED AND FILED Jan 9 1986  
 BY: Charles E. Murphy  
 CIVIL TITLE: Deputy County Surveyor  
 STATE OF CALIFORNIA  
 DOCUMENT NO. \_\_\_\_\_  
 STATEMENT ON BACK OF SHEET

# CORNER RECORD

COUNTY OF MARIN T. \_\_\_\_\_ R. \_\_\_\_\_ MERIDIAN \_\_\_\_\_ CALIFORNIA

CORNER TYPE: GOV'T. CORNER  MEANDER  RANCHO  CONTROL  OTHER

CORNER IDENTIFICATION — DATE OF VISIT \_\_\_\_\_ 19\_\_\_\_



CORNER — LEFT AS FOUND  FOUND AND TAGGED  REESTABLISHED OBLITERATED CORNER  REBUILT

PHYSICAL DESCRIPTION OF CORNER FOUND; EVIDENCE AND METHOD USED TO IDENTIFY OR REESTABLISH

Set a 3/4" iron pipe with plastic plug embossed "LS 3775" at the southwesterly corner of Lot 12 "Hacienda Terrace Unit 1" recorded in book 6 of Maps at page 80, Marin County Records, by and per said map.

PHYSICAL DESCRIPTION OF MONUMENTS REBUILT OR PERPETUATED

As shown

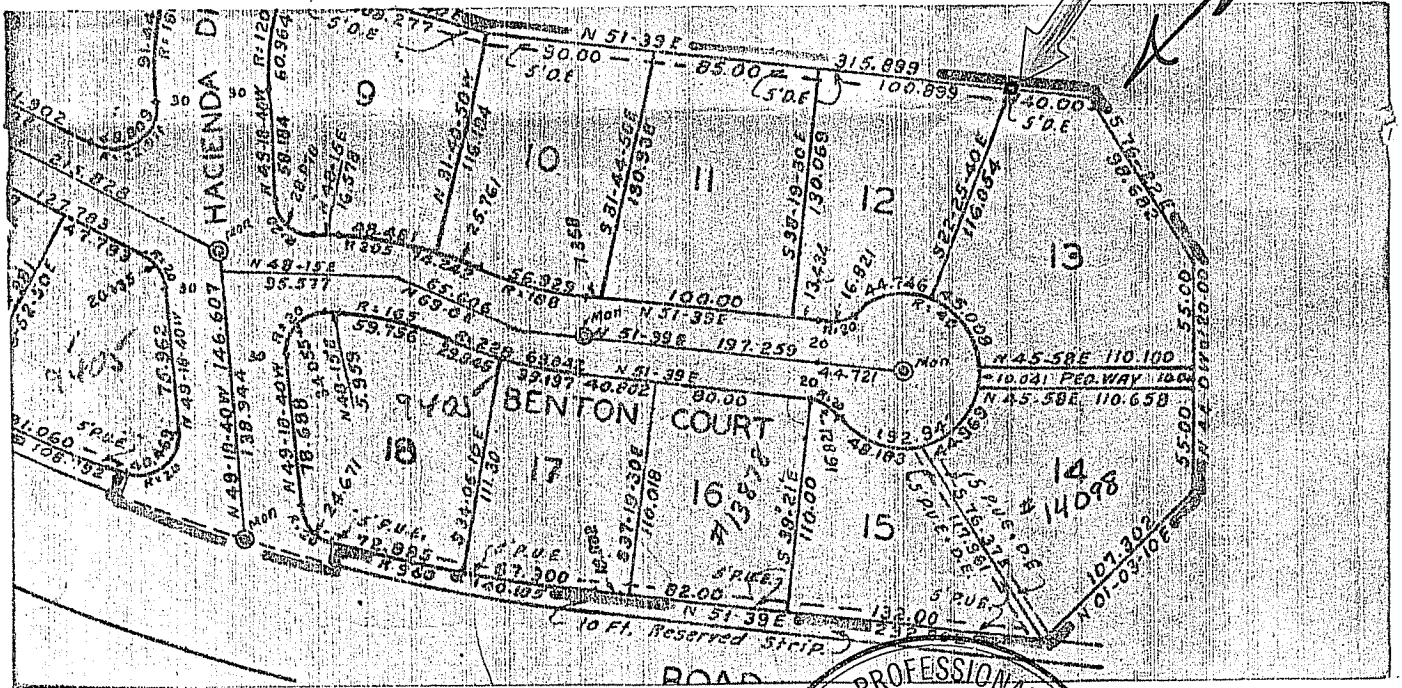
J 1435 Webster  
AP No. 39-011-09

CALIFORNIA COORDINATE SYSTEM ORDER: FIRST  SECOND  THIRD

STATIONS USED: NGS (USC & GS)  STATE  COUNTY  OTHER  STATION \_\_\_\_\_ STATION \_\_\_\_\_

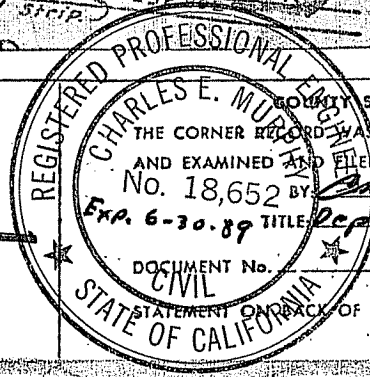
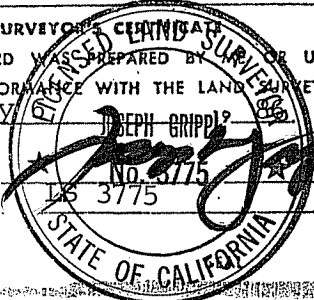
ZONE \_\_\_\_\_ ELEVATION \_\_\_\_\_ NORTHINGS (Y) \_\_\_\_\_ EASTINGS (X) \_\_\_\_\_

SKETCH: (Include reference tie or witness points, remarks and topo of area)



SURVEYOR'S CERTIFICATE  
THIS CORNER RECORD WAS PREPARED BY \_\_\_\_\_ UNDER MY DIRECTION IN CONFORMANCE WITH THE LAND SURVEYORS ACT ON January

SIGNED: \_\_\_\_\_  
L.S. or R.C.E. No.: \_\_\_\_\_



COUNTY SURVEYOR'S CERTIFICATE  
THE CORNER RECORD WAS RECEIVED Jan 8 1986  
AND EXAMINED AND FILED Jan 9 1986  
No. 18,652 BY Charles E. Murphy  
Exp. 6-30-89 TITLE County Surveyor

DOCUMENT No. \_\_\_\_\_  
STATEMENT ON BACK OF SHEET

YES  NO