

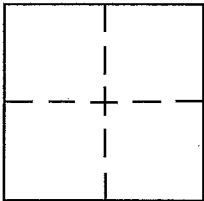
**CORNER RECORD**

Document Number APN 38-460-33

City of TIBURON

County of MARIN, California

Brief Legal Description PARCEL B, PARADISE CAY NORTH, R.M. 21, PAGE 47, MARIN COUNTY RECORDS.



**CORNER TYPE**

Government Corner  Control   
Meander  Property   
Rancho  Other   
Date of Survey SEPTEMBER 21, 2012

**COORDINATES (Optional)**

N. \_\_\_\_\_  
E. \_\_\_\_\_  
Zone \_\_\_\_\_ NAD27  NAD83   
NAD 83 Epoch \_\_\_\_\_  
Elev. \_\_\_\_\_  
Vert. Datum: NGVD29  NAVD88   
Meas. Units: Metric  Imperial

Corner - Left as found  Found and tagged  Established  Reestablished  Rebuilt

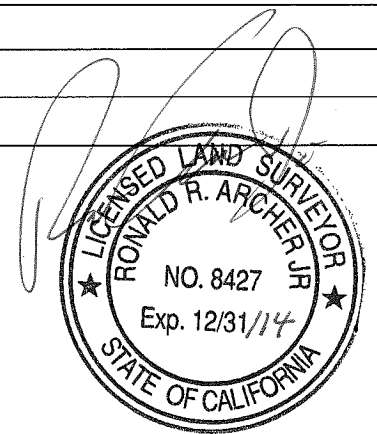
Identification and type of corner found: Evidence used to identify or procedure used to establish or reestablish the corner:  
FOUND STANDARD CITY MONUMENTS ON TRINIDAD DRIVE AS SHOWN ON THE MAP OF PARADISE CAY NORTH  
FILED IN BOOK 21 OF RECORD MAPS AT PAGE 47, MARIN COUNTY RECORDS. SEE SHEET 2 FOR DESCRIPTION  
OF FOUND MONUMENTS. RECORDS DATA FROM THIS MAP WAS USED TO ESTABLISH THE CORNERS AND  
SIDELINES OF SAID PARCEL. (A.P.N. 038-460-033)

A description of the physical condition of the monument as found and as set or reset: ALL MONUMENTS FOUND AND SET  
AND FOUND ARE IN GOOD CONDITION.

**SURVEYOR'S STATEMENT**

This Corner Record was prepared by me or under my direction in conformance with  
the Land Surveyor's Act on DECEMBER 18 2012

Signed [Signature] P.L.S. or R.C.E. No. PLS 8427



**COUNTY SURVEYOR'S STATEMENT**

This Corner Record was received JANUARY 2, 2013

and examined and filed MARCH 20, 2013

Signed [Signature] P.L.S. or R.C.E. No. 7821

Title DEPUTY COUNTY SURVEYOR



County Surveyor's Comment \_\_\_\_\_

# LEGEND

- PROPERTY LINE
- FOUND MONUMENT
- SET 1/2" REBAR AND CAP LS 8427
- SET CONCRETE NAIL AND BRASS TAG LS 8427

RECORD DATA (100.00)

**LOT 15  
PARADISE CAY  
NORTH  
(R.M. 21-47)**

EXISTING REDWOOD  
FENCE LINE

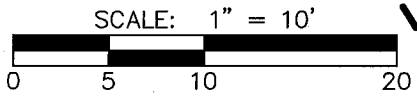
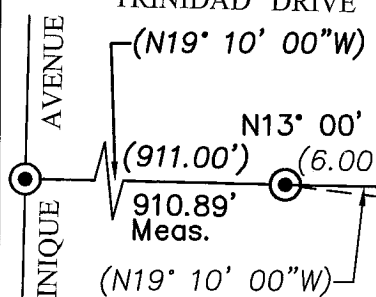
## BASIS OF BEARINGS

THE LINE BETWEEN 2 EXISTING  
MONUMENTS ON TRINIDAD DRIVE  
TAKEN AS N 19° 10' 00" W AS  
AS SHOWN ON THE MAP OF  
PARADISE CAY NORTH R.M. 21, 47

**LOT 27  
PARADISE CAY NORTH  
(R.M. 21-47)**

SET 1/2" REBAR &  
CAP LS 8427 AT  
EDGE OF PAVED  
ROADWAY.

SET CONCRETE  
NAIL WITH BRASS  
TAG LS 8427 AT  
PROPERTY CORNER



SET 1/2" REBAR &  
CAP LS 8427 AT  
EDGE OF PAVED  
ROADWAY.

SET 60D NAIL AND  
CHASER ON  
PROPERTY LINE

