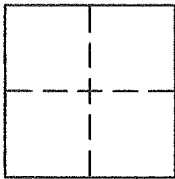


CORNER RECORD

Document Number 038-432-15

City of TIBURON and County of MARIN, California

Brief Legal Description: PARCEL "A", MAP ENTITLED "RING MOUNTAIN SUBDIVISION, BLACKFIELD DRIVE PHASE", FILED 10/26/1988 IN BOOK 20 OF MAPS, AT PAGE 48, MARIN COUNTY OFFICIAL RECORDS.



CORNER TYPE

Government Corner Control
Meander Property
Rancho Other

Date of Survey 1/17/2017

COORDINATES (Optional)

N: _____
E: _____
Zone: _____ NAD 27 NAD 83
Elev: _____
Vert. Datum: NGVD29 NAVD88
Meas. Units: Metric Imperial

CORNER - LEFT AS FOUND FOUND AND TAGGED ESTABLISHED REESTABLISHED REBUILT

Identification and type of corner found: Evidence used to identify or procedure used to establish or reestablish the corner:

FOUND MONUMENTS PER R1 AS SHOWN ON PAGE 2.

A description of the physical condition of the monument as found and as set or reset:

FOUND MONUMENTS AND SET POINTS AS SHOWN ON PAGE 2.

SURVEYOR'S STATEMENT:

The corner record was prepared by me or under my direction in conformance with

the Land Surveyors' Act on JANUARY 20, 2017

Signed: *Serena L. Goodwin* L.S.# 8708



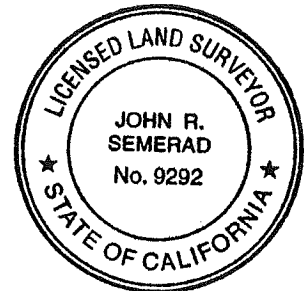
COUNTY SURVEYOR'S STATEMENT:

The corner record was received FEB. 19, 2017

and examined and filed MAY 17, 2017

Signed: *John R. Semerad* R.C.E. or L.S. No. 9292

Title: DEPUTY C.S.



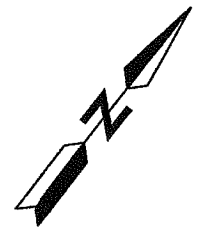
COUNTY SURVEYOR'S COMMENT:

LEGEND

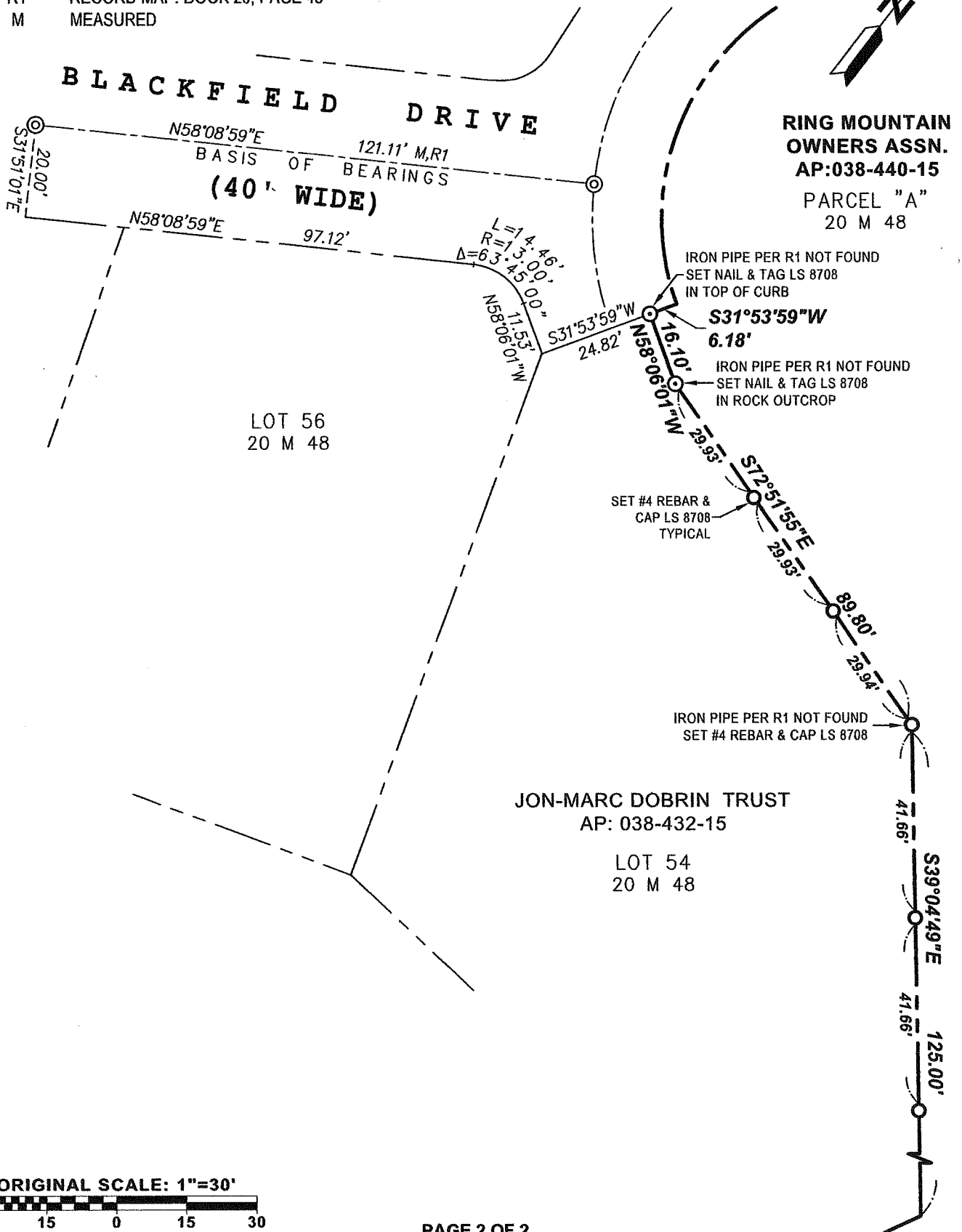
- SUBJECT BOUNDARY LINES PER R1
- - - OTHER BOUNDARY LINES PER R1
- MONUMENT LINE PER R1
- - - TIE LINE
- ⊙ FOUND 2" BRASS DISC & PUNCH, RCE 22485 PER R1
- SET #4 REBAR & PLASTIC CAP LS 8708
- ⊙ SET NAIL & 3/4" BRASS TAG LS 8708 AS NOTED
- R1 RECORD MAP: BOOK 20, PAGE 48
- M MEASURED

AMERICAN LAND SURVEYING, INC.
 316 Tennessee Avenue, Mill Valley, Ca 94941
 P:(415) 888-8580 ALS17002A E:office@alspls.com

CORNER RECORD



RING MOUNTAIN OWNERS ASSN.
 AP:038-440-15
 PARCEL "A"
 20 M 48



ORIGINAL SCALE: 1"=30'

