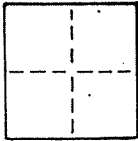


CORNER RECORD

COUNTY OF MARIN T. \_\_\_\_\_ R. \_\_\_\_\_ MERIDIAN CALIFORNIA

CORNER TYPE: GOV'T. CORNER  MEANDER  RANCHO  CONTROL  OTHER

CORNER IDENTIFICATION — DATE OF VISIT \_\_\_\_\_ 19\_\_\_\_



CORNER — LEFT AS FOUND  FOUND AND TAGGED  REESTABLISHED OBLITERATED CORNER  REBUILT

PHYSICAL DESCRIPTION OF CORNER FOUND; EVIDENCE AND METHOD USED TO IDENTIFY OR REESTABLISH

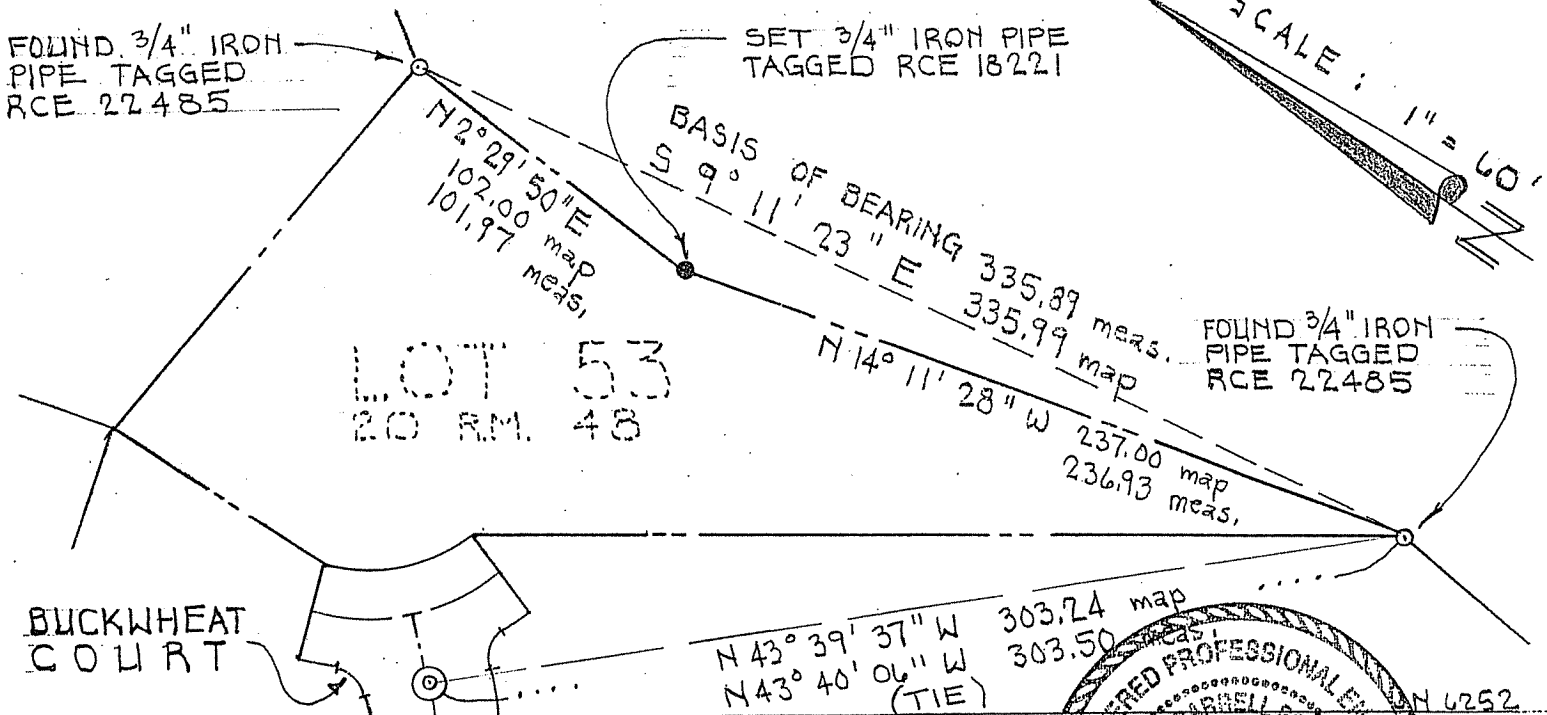
APN 38-432-11 TIBURON, CA.

PHYSICAL DESCRIPTION OF MONUMENTS REBUILT OR PERPETUATED

SET 3/4" IRON PIPE WITH TAG, RCE 18221, AS SHOWN, FOR THE ANGLE POINT IN THE EASTERLY LINE OF LOT 153, 20 RM 48, MARIN COUNTY RECORDS. THE CORNER WAS SET ON OCTOBER 7, 1992.

CALIFORNIA COORDINATE SYSTEM ORDER: FIRST  SECOND  THIRD   
STATIONS USED: NGS (USC & GS)  STATE  COUNTY  OTHER  STATION \_\_\_\_\_ STATION \_\_\_\_\_  
ZONE \_\_\_\_\_ ELEVATION \_\_\_\_\_ NORTHINGS (Y) \_\_\_\_\_ EASTINGS (X) \_\_\_\_\_

SKETCH: (Include reference tie or witness points, remarks and topo of area)



SURVEYOR'S CERTIFICATE

THIS CORNER RECORD WAS PREPARED BY ME OR UNDER MY DIRECTION IN CONFORMANCE WITH THE LAND SURVEYORS ACT ON OCTOBER 16 19 92

SIGNED: [Signature]  
L.S. or R.C.E. No.: C-18221

THE CORNER RECORD WAS RECEIVED AND EXAMINED AND FILED BY: [Signature] DATE: SEP 21 1992  
DOCUMENT No. \_\_\_\_\_ STATEMENT ON BACK OF SHEET \_\_\_\_\_

