

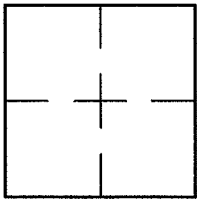
CORNER RECORD

Document Number A.P. 38-432-10

City of TIBURON

County of MARIN, California

Brief Legal Description LOT 52 PER 20 R.M. 48



CORNER TYPE

COORDINATES (Optional)

Government Corner Control
 Meander Property
 Rancho Other
 Date of Survey 4/2/13

N. _____
 E. _____
 Zone _____ NAD27 NAD83
 NAD83 Epoch _____
 Elev. _____
 Vert. Datum: NGVD29 NAVD88
 Meas. Units: Metric Imperial

Corner- Left as found Found and tagged Established Reestablished Rebuilt

Identification and type of corner found: Evidence used to identify or procedure used to establish or reestablish the corner:
REESTABLISHED LOT 52 USING FOUND STREET MONUMENTS ON BUCKWHEAT COURT PER 20 R.M. 48 AND AS SHOWN ON SHEET 2.

A description of the physical condition of the monument as found and as set or reset: SEE SHEET 2.

SURVEYOR'S STATEMENT

This Corner Record was prepared by me or under my direction in conformance with

the Land Surveyor's Act on APRIL 4, 2013

Signed Lawrence P. Doyle P.L.S. or R.C.E. No. P.L.S. 4694



COUNTY SURVEYOR'S STATEMENT

This Corner Record was received MAY 7, 2013

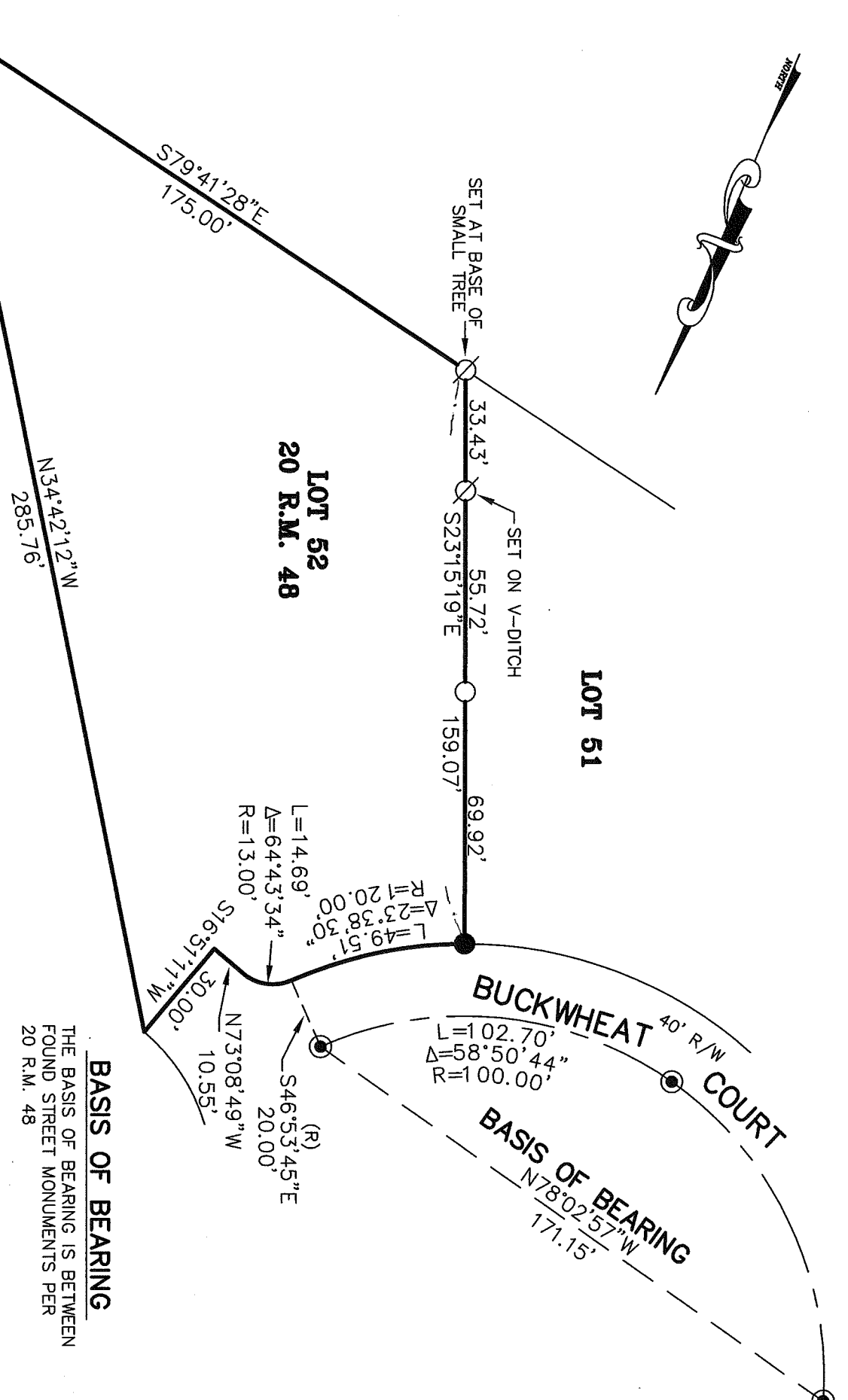
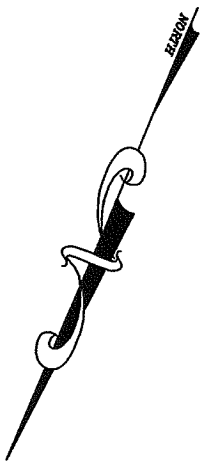
and examined and filed JUNE 14th 2013

Signed Richard G. Simonitch P.L.S. or R.C.E. No. 7821



Title DEPUTY CO. SURVEYOR

County Surveyor's Comment _____



- LEGEND**
- FOUND STREET MONUMENT PER 20 R.M. 48
 - FOUND PIPE/PLUG RE 22485 PER 20 R.M. 48
 - SET NAIL/TAG L.S. 4694
 - SET PIPE/PLUG L.S. 4694



CORNER RECORD LOT 52, 20 R.M. 48 TIBURON MARIN COUNTY CALIFORNIA	
SCALE: 1" = 40' DATE: 3/2013	LAWRENCE P. DOYLE LAND SURVEYOR/CIVIL ENGINEER 100 HELENS LANE MILL VALLEY CA 94941 (415-388-9585)
DRAWN BY: SHEET 2 OF 2	DRAWING NO. 2349