

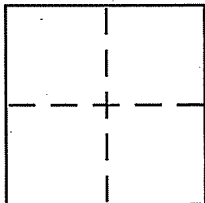
CORNER RECORD

Document Number APN. 038-432-02

City of TIBURON

County of MARIN, California

Brief Legal Description LOT 48, KING MOUNTAIN SUB., TIBURON - 20 R.M. 48



CORNER TYPE

Government Corner Control
 Meander Property
 Rancho Other
 Date of Survey 6/24/03

COORDINATES (Optional)

N. _____
 E. _____
 Zone _____ NAD27 NAD83
 NAD83 Epoch _____
 Elev. _____
 Vert. Datum: NGVD29 NAVD88
 Meas. Units: Metric Imperial

Corner - Left as found Found and tagged Established Reestablished Rebuilt

Identification and type of corner found: Evidence used to identify or procedure used to establish or reestablish the corner:
FOUND SUBDIVISION STREET MONUMENTS AND NORTH CORNER OF LOT 48 AS INDICATED HEREDN. PERFORMED FIELD SURVEY AND LOCATED AND ESTABLISHED CORNERS AND LINE POINTS PER RECORD INFORMATION.

A description of the physical condition of the monument as found and as set or reset:
FOUND MONUMENTS AND NORTH CORNER OF LOT 48 UNDISTURBED AS INDICATED.

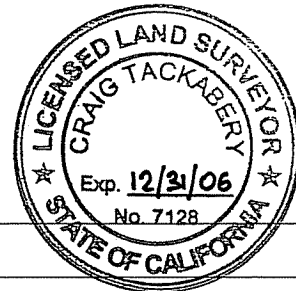
SURVEYOR'S STATEMENT

This Corner Record was prepared by me or under my direction in conformance with the Land Surveyor's Act on JUNE 24 2003
 Signed [Signature] P.L.S or R.C.E. No. PLS6234

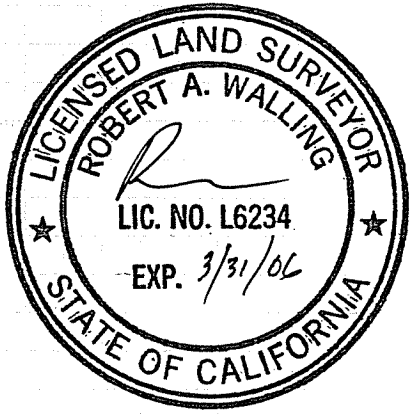
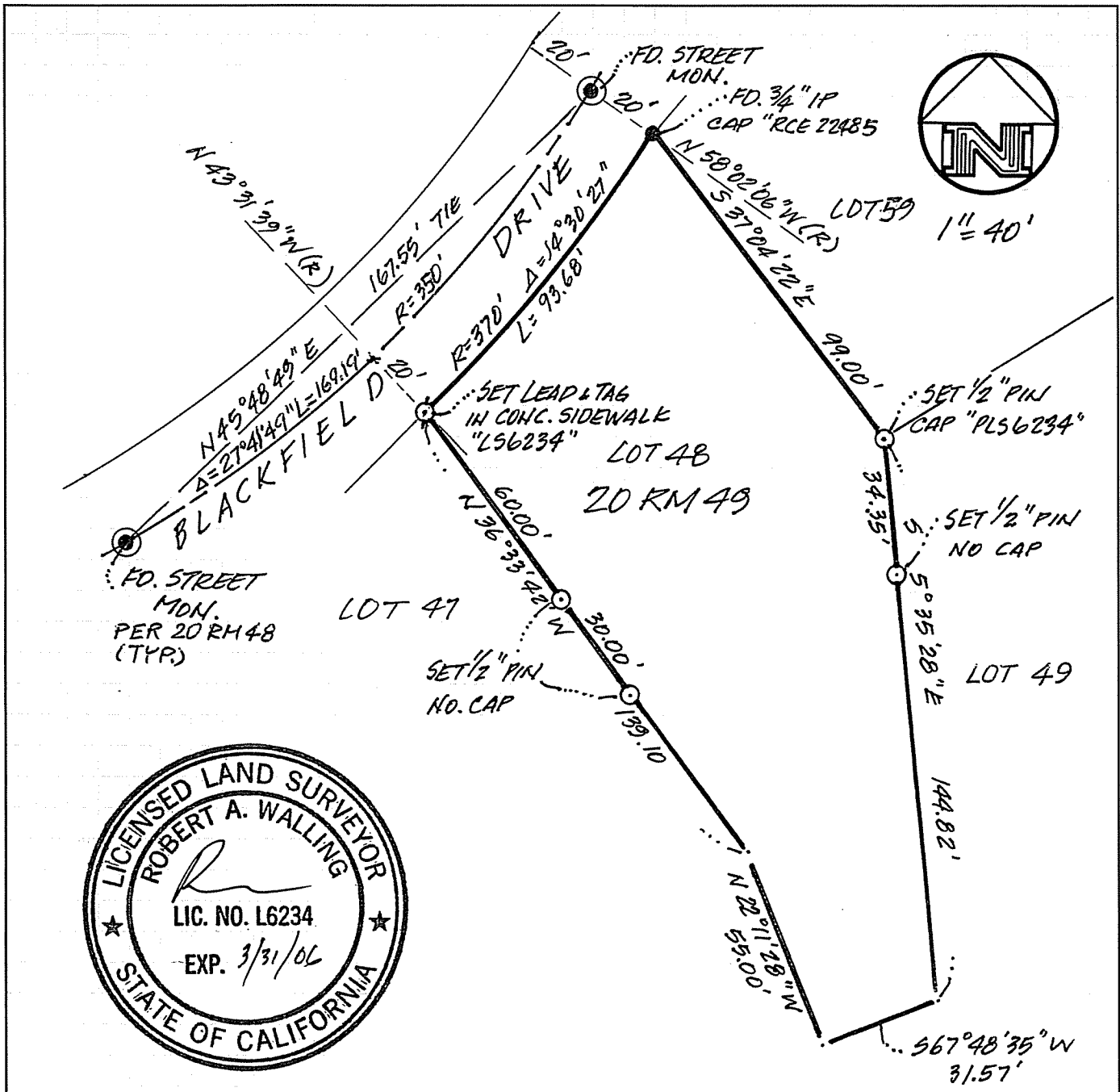


COUNTY SURVEYOR'S STATEMENT

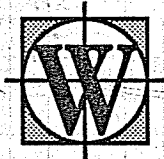
This Corner Record was received JULY 2, 2003
 and examined and filed JULY 10, 2003
 Signed [Signature] P.L.S or R.C.E. No. 7128
 Title COUNTY SURVEYOR



County Surveyor's Comment _____



SURVEY PLAT
 LANDS OF PETRINI
 338 BLACKFIELD DR., TIBURON
 APN. 038-432-02
 MARIN COUNTY, CA.



BOB WALLING TECHNICAL SERVICES
 P.O. Box 1346 • Glen Ellen, CA 95442
 (707) 938-1593 (415) 382-1593

JN. 103-20

JUNE 2003