

CORNER RECORD

Agency Index CR22-069

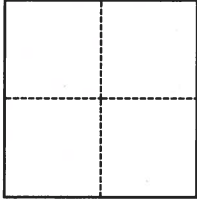
Document Number 038-431-04

City of TIBURON County of MARIN, California

Brief Legal Description LOT 63 OF RING MOUNTAIN SUBDIVISION 20 RM 48

CORNER TYPE

COORDINATES (Optional)



- Government Corner
- Meander
- Rancho
- Control
- Property
- Other

Date of Survey April 26, 2022

N. _____ E. _____

Elevation _____

Units Metric U.S. Survey Foot

Horizontal Datum _____

Zone _____ Epoch Date _____

Vertical Datum _____

Complies with Public Resources Code §§8801-8819

Complies with Public Resources Code §§8890-8902

PLS Act Ref.: 8765(d) 8771 8773 Other:

Corner/Monument: Left as found Established Rebuilt Pre-Construction

Found and tagged Reestablished Referenced Post-Construction

Narrative of corner identified and monument as found, set, reset, replaced, or removed:

See sheet #2 for description(s):

SURVEYOR'S STATEMENT

This Corner Record was prepared by me or under my direction in conformance with the Professional Land Surveyors' Act on October 19, 2022

Signed L Oberkammer P.L.S. or R.C.E. No. PCE 12094



COUNTY SURVEYOR'S STATEMENT

This Corner Record was received October 19, 2022

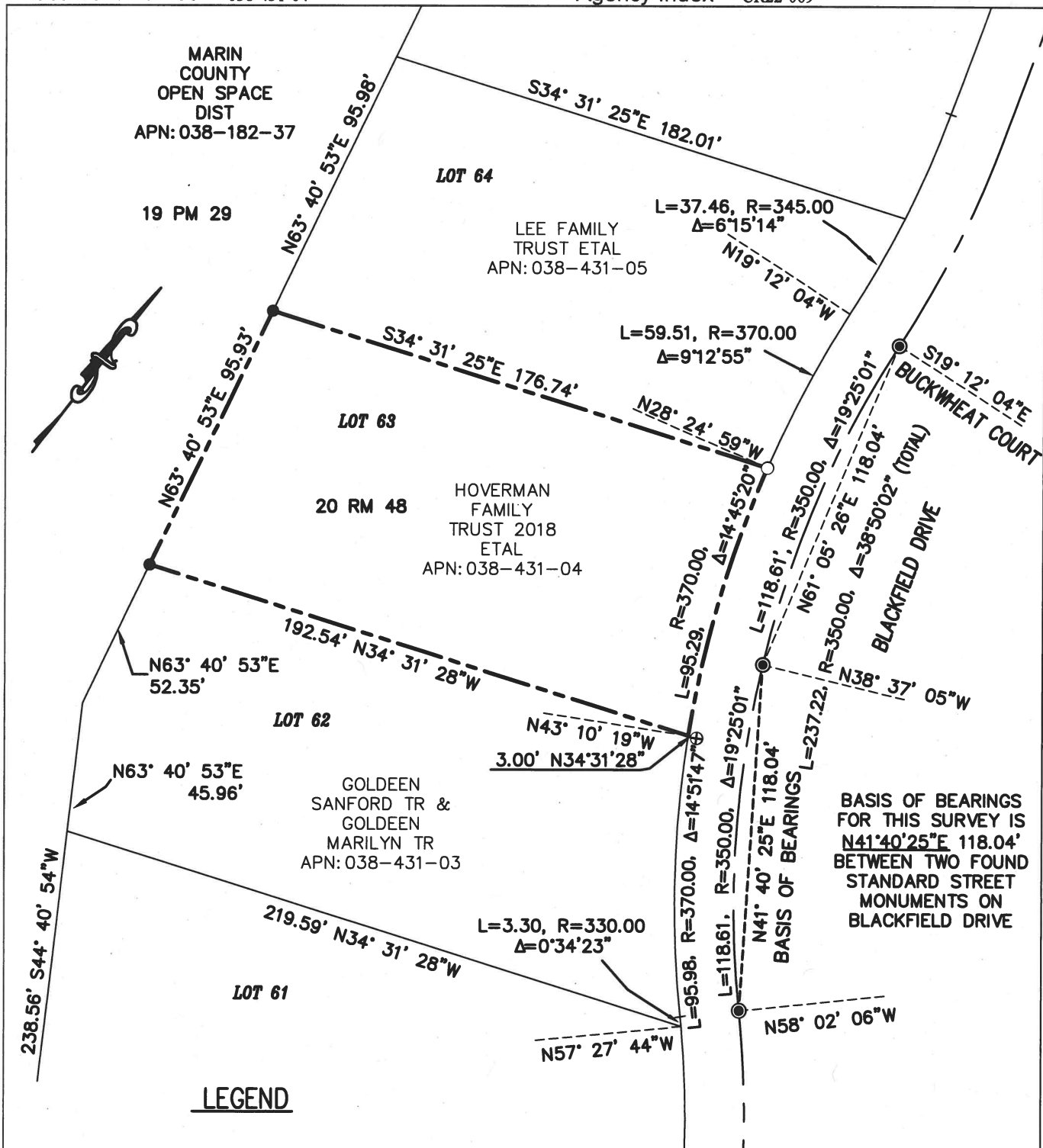
and examined and filed October 19, 2022

Signed T.W.P. P.L.S. [REDACTED] No. 8176

Title County Surveyor

County Surveyor's Comment





BASIS OF BEARINGS FOR THIS SURVEY IS $N41^{\circ}40'25''E$ $118.04'$ BETWEEN TWO FOUND STANDARD STREET MONUMENTS ON BLACKFIELD DRIVE

LEGEND

- FOUND $\frac{3}{4}$ " IRON PIPE (RCE 22485) (PER R1)
- ⊙ FOUND STANDARD STREET MONUMENT 2" BRASS DISK W/PUNCH STAMPED 22485 (PER R1)
- SET $\frac{1}{2}$ " REBAR AND CAP (RCE 12094)
- ⊗ SET NAIL & TAG (RCE 12094) OFFSET 3.00' ON PROLONGATION OF SOUTHERLY BOUNDARY LINE

--- PROPERTY BOUNDARY

(R1: 20 RM 48)

CORNER RECORD

LANDS OF HOVERMAN FAMILY TRUST
 2018 ETAL
 (DN:18-031158 APN:038-431-04)
 LOT 63 OF RING MOUNTAIN SUBDIVISION
 "BLACKFIELD DRIVE PHASE"
 TIBURON MARIN COUNTY CALIFORNIA
OBERKAMPER & ASSOCIATES
CIVIL ENGINEERS INC.
 7200 REDWOOD BLVD SUITE 308
 NOVATO CA 94945

SCALE: 1" = 50' JOB#: 22-123 (415)897-2800