

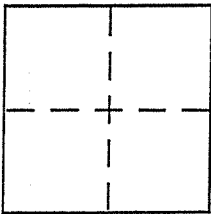
**CORNER RECORD**

Document Number APN 038-422-05

City of TIBURON

County of MARIN, California

Brief Legal Description LOT 6 OF 20 MAPS 47



**CORNER TYPE**

Government Corner  Control   
Meander  Property   
Rancho  Other   
Date of Survey \_\_\_\_\_

**COORDINATES (Optional)**

N. \_\_\_\_\_  
E. \_\_\_\_\_  
Zone \_\_\_\_\_ NAD27  NAD83   
NAD83 Epoch \_\_\_\_\_  
Elev. \_\_\_\_\_  
Vert. Datum: NGVD29  NAVD88   
Meas. Units: Metric  Imperial

Corner - Left as found  Found and tagged  Established  Reestablished  Rebuilt

Identification and type of corner found: Evidence used to identify or procedure used to establish or reestablish the corner:

IN 2001 FOUND A 3/4" IRON PIPE "RCE 22485".  
ON 5/21/03 RETURNED AND THIS PIPE HAVING  
BEEN DESTROYED, SET A 3/4" IRON PIPE  
"LS 4788" IN THE SAME POSITION

A description of the physical condition of the monument as found and as set or reset: \_\_\_\_\_

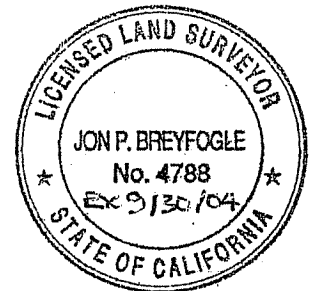
SEE ABOVE

**SURVEYOR'S STATEMENT**

This Corner Record was prepared by me or under my direction in conformance with

the Land Surveyor's Act of MAY 21, 2003

Signed [Signature] P.L.S or R.C.E. No. PLS 4788



**COUNTY SURVEYOR'S STATEMENT**

This Corner Record was received MAY 27, 2003

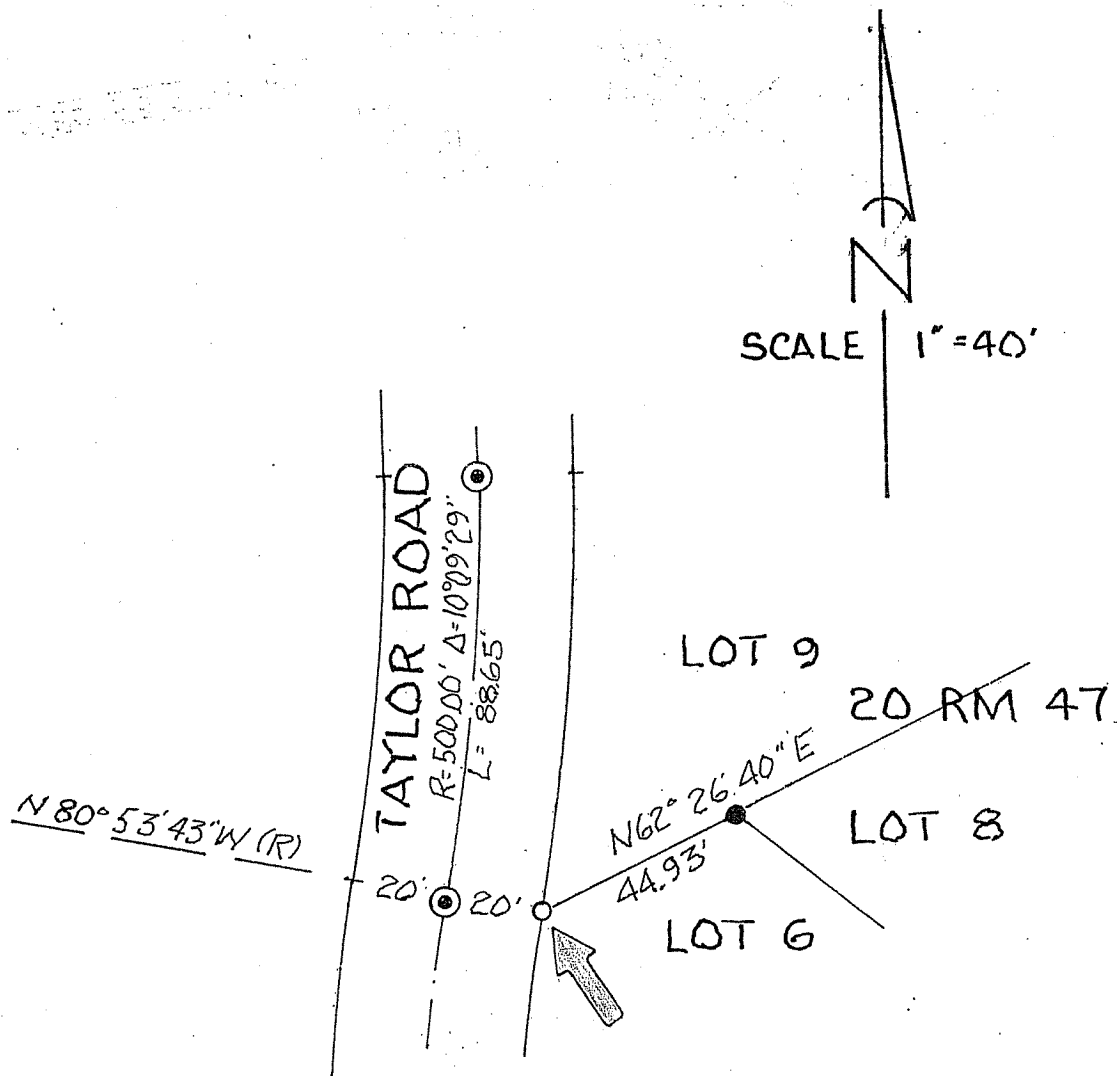
and examined and filed JUNE 2, 2003

Signed [Signature] P.L.S or R.C.E. No. 7128

Title COUNTY SURVEYOR



County Surveyor's Comment \_\_\_\_\_



**LEGEND**

- DENOTES FOUND 3/4" IRON PIPE "RCE 22485" (BENT)
- " SET 3/4" IRON PIPE "LS4788" AT THE POSITION OF A PREVIOUSLY FOUND 3/4" IRON PIPE "RCE 22485" (DESTROYED BY CONSTRUCTION)
- ⊙ " FOUND STANDARD STREET MONUMENT