

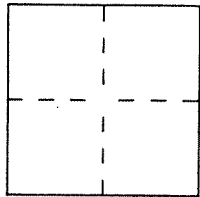
CORNER RECORD

Document Number A.P.# 38-410-03

City of TIBURON

County of MARIN, California

Brief Legal Description LOT 12 ~ 20 RM 46



CORNER TYPE

Government Corner Control
 Meander Property
 Rancho Other
 Date of Survey _____

COORDINATES (Optional)

N. _____
 E. _____
 Zone _____ Datum _____
 Elev. _____

Corner — Left as found Found and tagged Established Reestablished Rebuilt

Identification and type of corner found: Evidence used to identify or procedure used to establish or reestablish the corner:
FIND. STD. ST. WELL MONUMENTS ON CENTERLINE OF
PASEO MIRA SOL AS SHOWN ON 20 RM 46 AND ON
REVERSE.

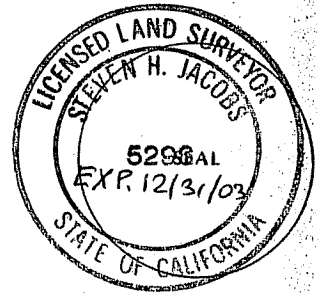
A description of the physical condition of the monument as found and as set or reset:
SET 3/4" I.P. TAGGED PLS 5296 LINE POINT AS SHOWN
ON REVERSE.

AP# 038-410-03

SURVEYOR'S STATEMENT

This Corner Record was prepared by me or under my direction in conformance with the Land Surveyors' Act on FEB. 25, 2001.

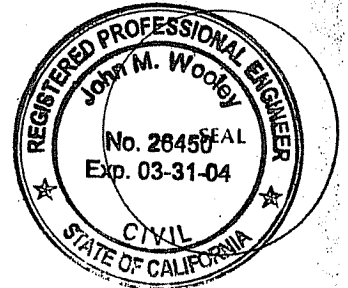
Signed [Signature] L.S. or R.C.E. Number P.L.S. 5296



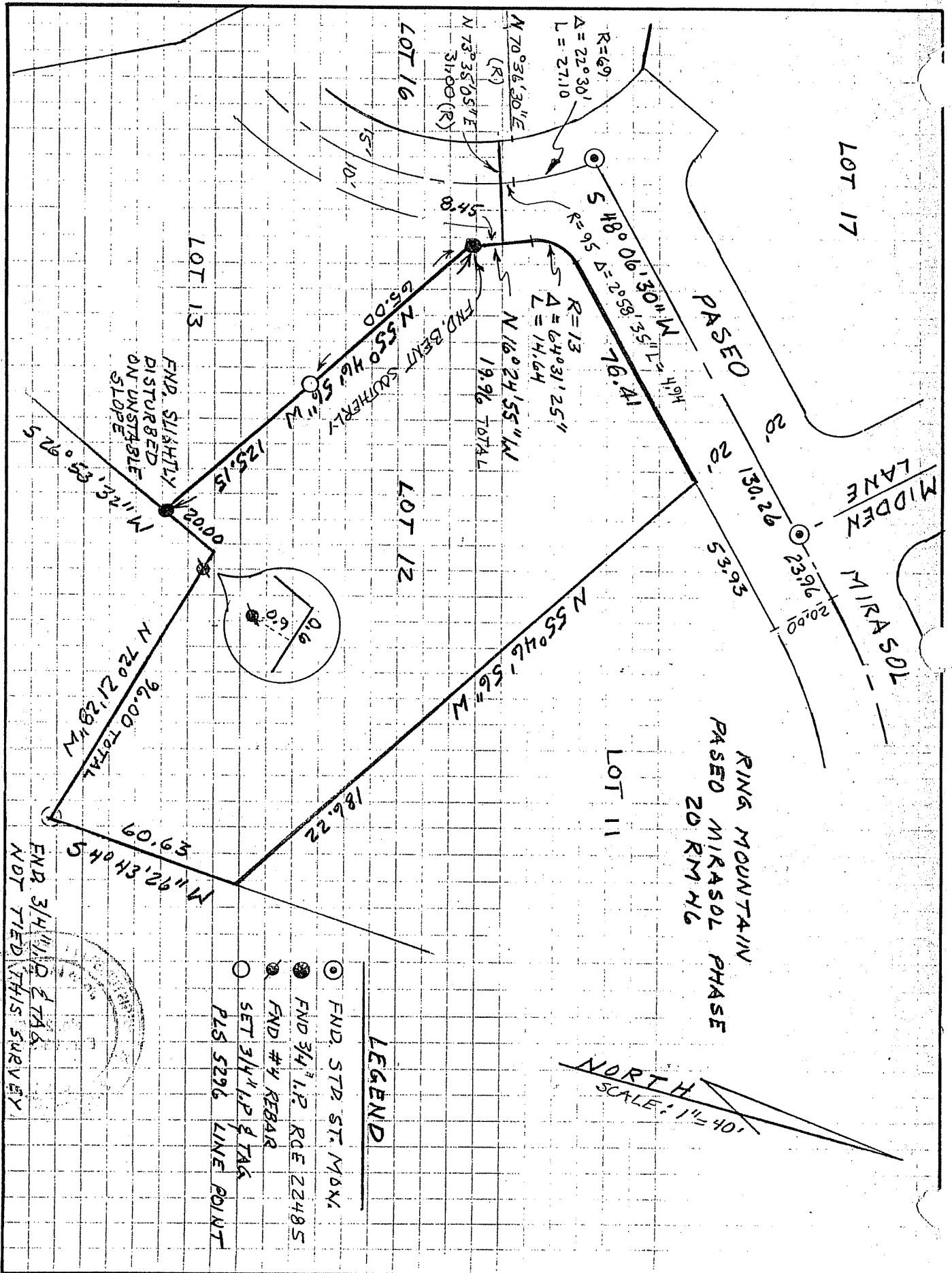
COUNTY SURVEYOR'S STATEMENT

This Corner Record was received MAY 29, 2001 and examined and filed MAY 31, 2001

Signed [Signature] Title DEPUTY



County Surveyor's Comment _____



END 3/4" I.P. & TAG.
NOT TIED THIS SURVEY

- LEGEND**
- ⊙ FND. STD. ST. MAX.
 - ⊙ FND 3/4" I.P. RCE 22485
 - ⊙ FND #4 REBAR
 - ⊙ SET 3/4" I.P. & TAG
 - PLS 5296 LINE POINT

NORTH
SCALE: 1" = 40'