

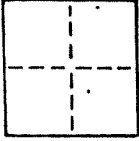
A. P. # 38-400-08

CORNER RECORD

COUNTY OF Marin T. _____ R. _____ MERIDIAN _____ CALIFORNIA

CORNER TYPE: GOVT. CORNER MEANDER RANCHO CONTROL OTHER

CORNER IDENTIFICATION — DATE OF VISIT _____ 19____



CORNER — LEFT AS FOUND FOUND AND TAGGED REESTABLISHED OBLITERATED CORNER REBUILT

PHYSICAL DESCRIPTION OF CORNER FOUND; EVIDENCE AND METHOD USED TO IDENTIFY OR REESTABLISH

Set a 3/4" iron pipe with plastic plug "L.S. 4788" at the southeasterly corner of Lot 8, "Final Map of Tiburon-Perini Unit One" filed in Book 19 of Maps at Page 81, Marin County Records.

A.P. # 38-400-08

PHYSICAL DESCRIPTION OF MONUMENTS. REBUILT OR PERPETUATED

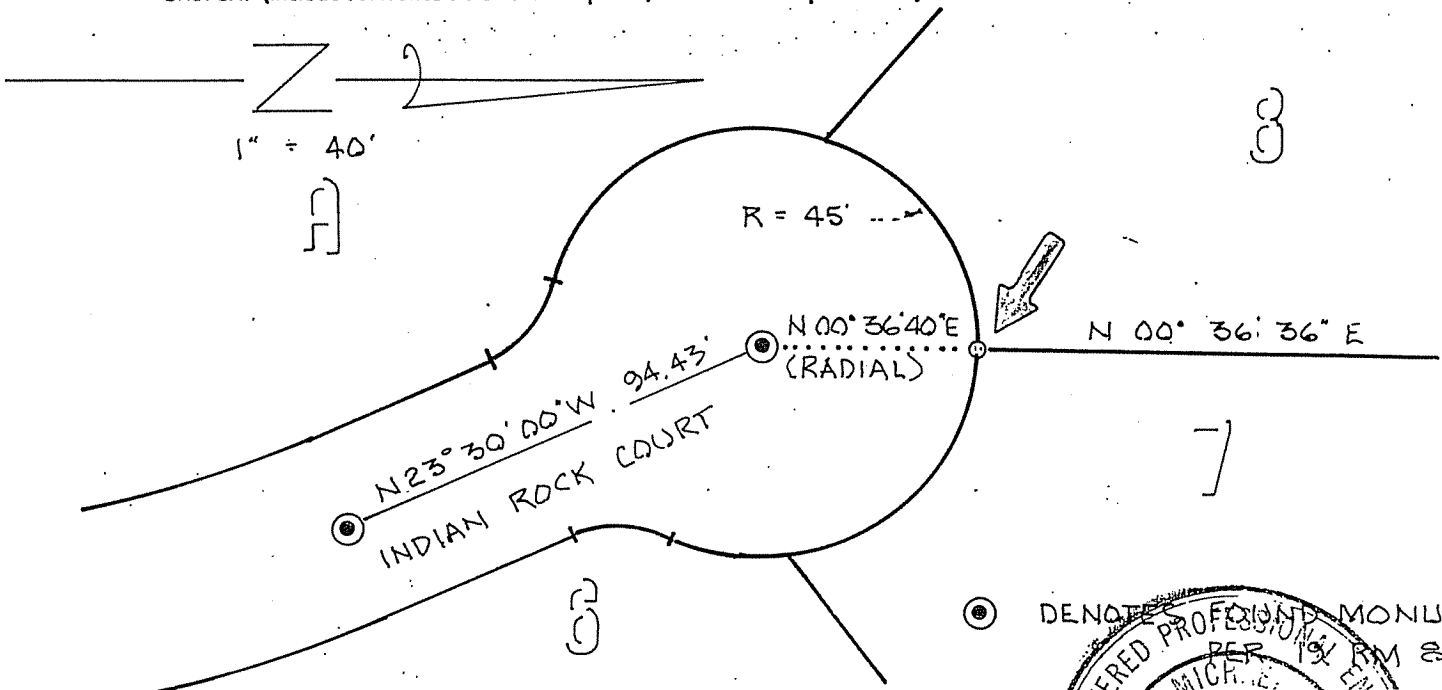
As shown

CALIFORNIA COORDINATE SYSTEM ORDER: FIRST SECOND THIRD

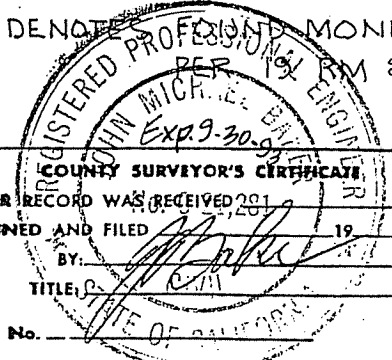
STATIONS USED: NGS (USC & GS) STATE COUNTY OTHER STATION _____ STATION _____

ZONE _____ ELEVATION _____ NORTHINGS (Y) _____ EASTINGS (X) _____

SKETCH: (Include reference tie or witness points, remarks and topo of area)



● DENOTE REGISTERED PROFESSIONAL MONUMENT PER 1981



SURVEYOR'S CERTIFICATE
 THIS CORNER RECORD WAS PREPARED BY ME OR UNDER MY DIRECTION IN CONFORMANCE WITH THE LAND SURVEYORS ACT ON April 12 1988

SIGNED: [Signature]
 L.S. or R.C.E. No. 4788



THE CORNER RECORD WAS RECEIVED AND EXAMINED AND FILED _____ 19____

BY: [Signature]

DOCUMENT No. _____

STATEMENT ON BACK OF SHEET YES NO