

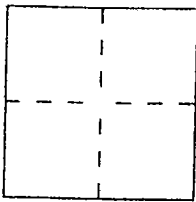
CORNER RECORD

Document Number 038-391-42

City of Tiburon

County of Marin, California

Brief Legal Description Marin Assessors Parcel 038-391-42



CORNER TYPE

Government Corner Control
Meander Property
Rancho Other
Date of Survey _____

COORDINATES (Optional)

N. _____
E. _____
Zone _____ Datum _____
Elev. _____

Corner — Left as found Found and tagged Established Reestablished Rebuilt

Identification and type of corner found: Evidence used to identify or procedure used to establish or reestablish the corner:

Found Standard Street Monuments
per 22 RS 73 (see map-over)

A description of the physical condition of the monument as found and as set or reset:

Set nails & tags LS 5290 and one 1/2" rebar & cap
LS 5290

SURVEYOR'S STATEMENT

This Corner Record was prepared by me or under my direction in conformance with the Land Surveyors' Act on December 16th 2014

Signed David Harp L.S. or R.C.E. Number LS 5290



COUNTY SURVEYOR'S STATEMENT

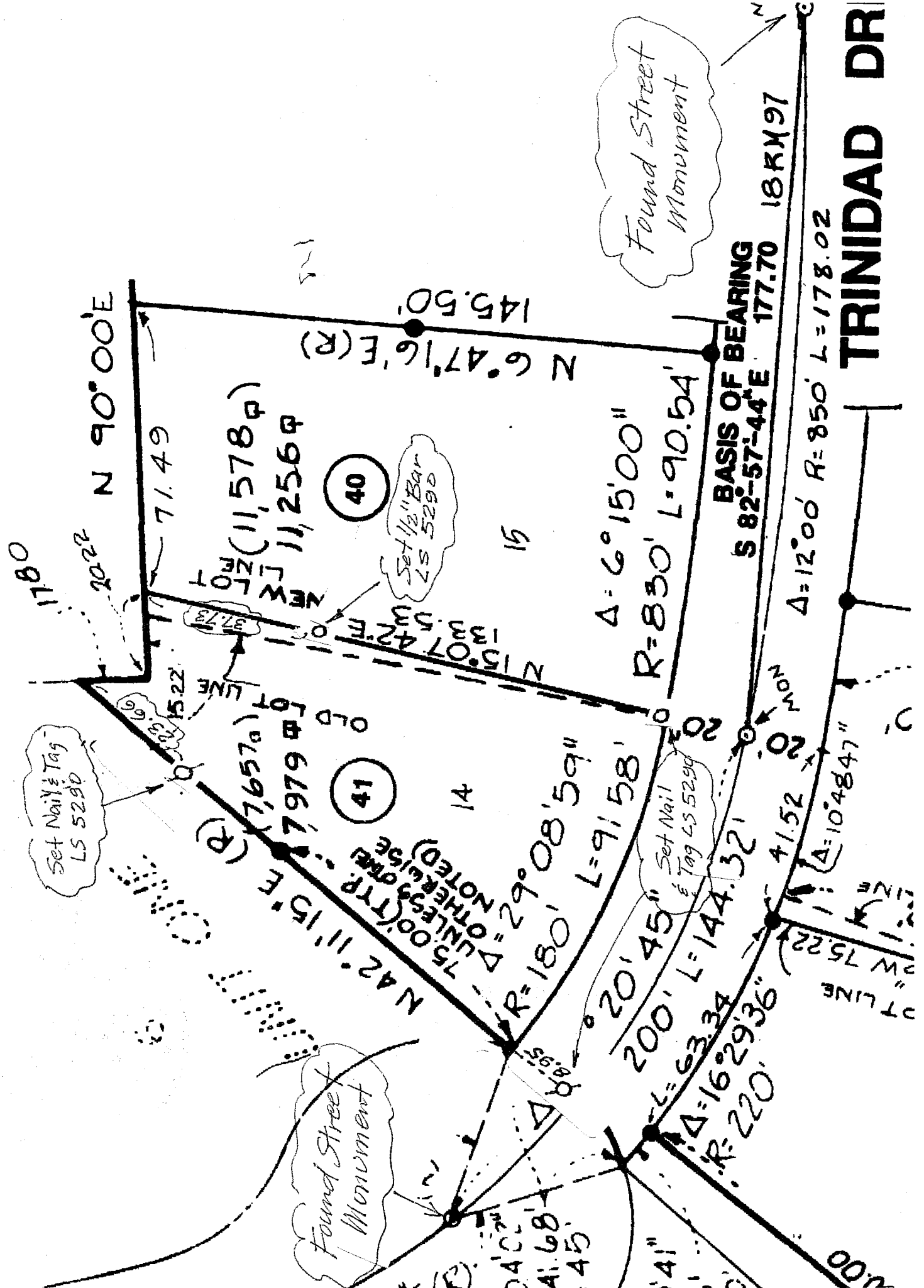
This Corner Record was received DECEMBER 15, 2014 and examined

and filed MARCH 12, 2015

Signed Paul Smith Title DEPUTY



County Surveyor's Comment _____



TRINIDAD DR

N 90° 00' E

71.49

N 6° 47' 16" E (R)

145.50

N 15° 07' 42" E
 N 15° 07' 42" E (R)
 N 15° 07' 42" E (R)

40

Set 1/2" Bar
 LS 5290

Δ = 6° 15' 00"

R = 830' L = 90.54'

BASIS OF BEARING
 S 82° 57' 44" E

177.70

18 RM 97

Δ = 12° 00' R = 850' L = 178.02

1178.0

2022

Set Nail & Tag
 LS 5290

75.00 (TRP - UNLESS OTHERWISE NOTED)
 N 42° 11' 15" E

41

14

R = 180' L = 91.58'

Δ = 29° 08' 59"

Set Nail & Tag LS 5290

Δ = 16° 29' 36"

R = 220' L = 63.34'

41.52

Δ = 10° 48' 47"

OT LINE
 75.22

Found Street Monument

Found Street Monument

1000

41" 68' 45"

141"

1000