

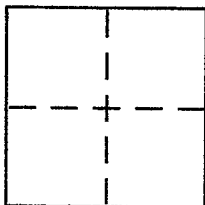
CORNER RECORD

Document Number 38.391.37

City of TIBURON

County of MARIN, California

Brief Legal Description LOT 18, PARADISE CAY, SOUTH CAY Unit 2 18RM97



CORNER TYPE

Government Corner Control
Meander Property
Rancho Other
Date of Survey July 18, 2005

COORDINATES (Optional)

N. _____
E. _____
Zone _____ NAD27 NAD83
NAD83 Epoch _____
Elev. _____
Vert. Datum: NGVD29 NAVD88
Meas. Units: Metric Imperial

Corner - Left as found Found and tagged Established Reestablished Rebuilt

Identification and type of corner found: Evidence used to identify or procedure used to establish or reestablish the corner:
REESTABLISH A PORTION OF THE EASTERLY LINE OF LOT 18 of the MAP OF PARADISE CAY, SOUTH CAY, Unit 2 18 RM 97 FROM EXISTING MONUMENTS ON TRINIDAD DRIVE. see sketch for details. DUE to Vegetation Along ACTUAL Lot Line, set OFFSET LINE (3'-6") to Lot LINE.

A description of the physical condition of the monument as found and as set or reset: set ASPHALT NAILS ON PROPERTY LINE PROJECTED TOWARDS the CENTER LINE of the street. set RANDOM NAILS PARALLEL with & OFFSET 3'-6" WESTERLY of SAID EASTERLY LINE. set TACK IN ROCK ALSO ON OFFSET LINE. Refer to sketch for details

SURVEYOR'S STATEMENT

This Corner Record was prepared by me or under my direction in conformance with the Land Surveyor's Act on AUGUST 5th 2005
Signed Douglas J. Scranton P.L.S or R.C.E. No. PLS 5379



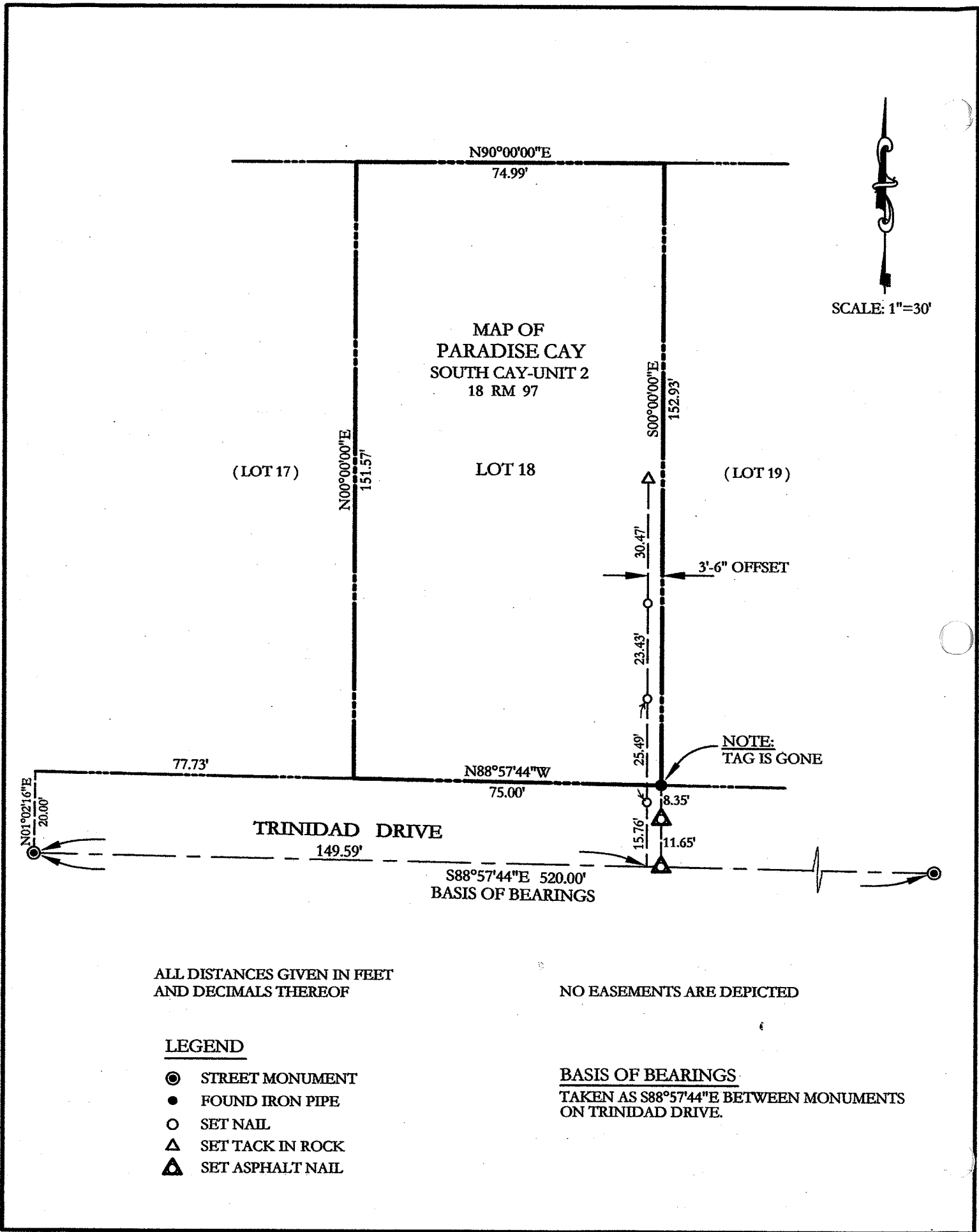
COUNTY SURVEYOR'S STATEMENT

This Corner Record was received AUGUST 8, 2005
and examined and filed SEPTEMBER 8, 2005
Signed _____ P.L.S or R.C.E. No. 7128
Title COUNTY SURVEYOR



County Surveyor's Comment _____

PREPARED BY: DO SCRANTON SURVEYING NOVATO, CA



ALL DISTANCES GIVEN IN FEET
AND DECIMALS THEREOF

NO EASEMENTS ARE DEPICTED

LEGEND

- ⊙ STREET MONUMENT
- FOUND IRON PIPE
- SET NAIL
- △ SET TACK IN ROCK
- ▲ SET ASPHALT NAIL

BASIS OF BEARINGS

TAKEN AS S88°57'44"E BETWEEN MONUMENTS
ON TRINIDAD DRIVE.