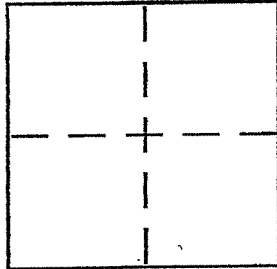


CORNER RECORD

Document Number LN. 2009-0011353

City of TIBURON County of MARIN, California  
Brief Legal Description LOT 19, MAP OF PARADISE CAY-SOUTH-UNIT 2, RECORDED IN BOOK 18 OF MAPS, AT PAGE 97, MARIN COUNTY RECORDS



**CORNER TYPE**  
Government Corner  Control   
Meander  Property   
Rancho  Other   
Date of Survey 25 JANUARY 2011

**COORDINATES (Optional)**  
N. \_\_\_\_\_  
E. \_\_\_\_\_  
Zone \_\_\_\_\_ NAD27  NAD83   
NAD83 Epoch \_\_\_\_\_  
Elev. \_\_\_\_\_  
Vert. Datum: NGVD29  NAVD88   
Meas. Units: Metric  Imperial

Corner - Left as found  Found & tagged  Established  Reestablished  Rebuilt

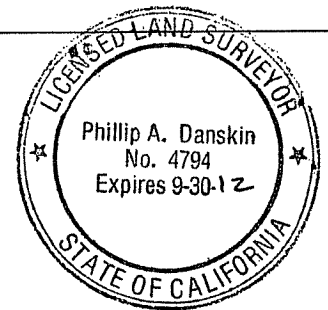
Identification and type of corner found: Evidence used to identify or procedure used to establish or reestablish corner:  
FOUND ORIGINAL MONUMENT A BRONZE DISK WITH PUNCH MARK & STAMPED "RCE 15945", WITH STANDARD HAND-HOLE ACCESS COVER, PER BOOK 18 OF MAPS, AT PAGE 97, MARIN COUNTY RECORDS, AS SHOWN UPON REVERSE SIDE.

A description of the physical condition of the monument as found and as set or reset: AS SHOW UPON REVERSE SIDE.

**SURVEYOR'S STATEMENT**

This Corner Record was prepared by me or under my direction in conformance with the Land Surveyor's Act on 25 JANUARY 2011.

Signed [Signature] P.L.S. No. 4794



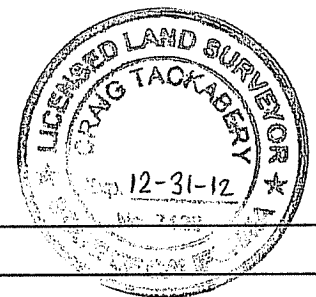
**COUNTY SURVEYOR'S STATEMENT**

This Corner Record was received FEBRUARY 4, 2011

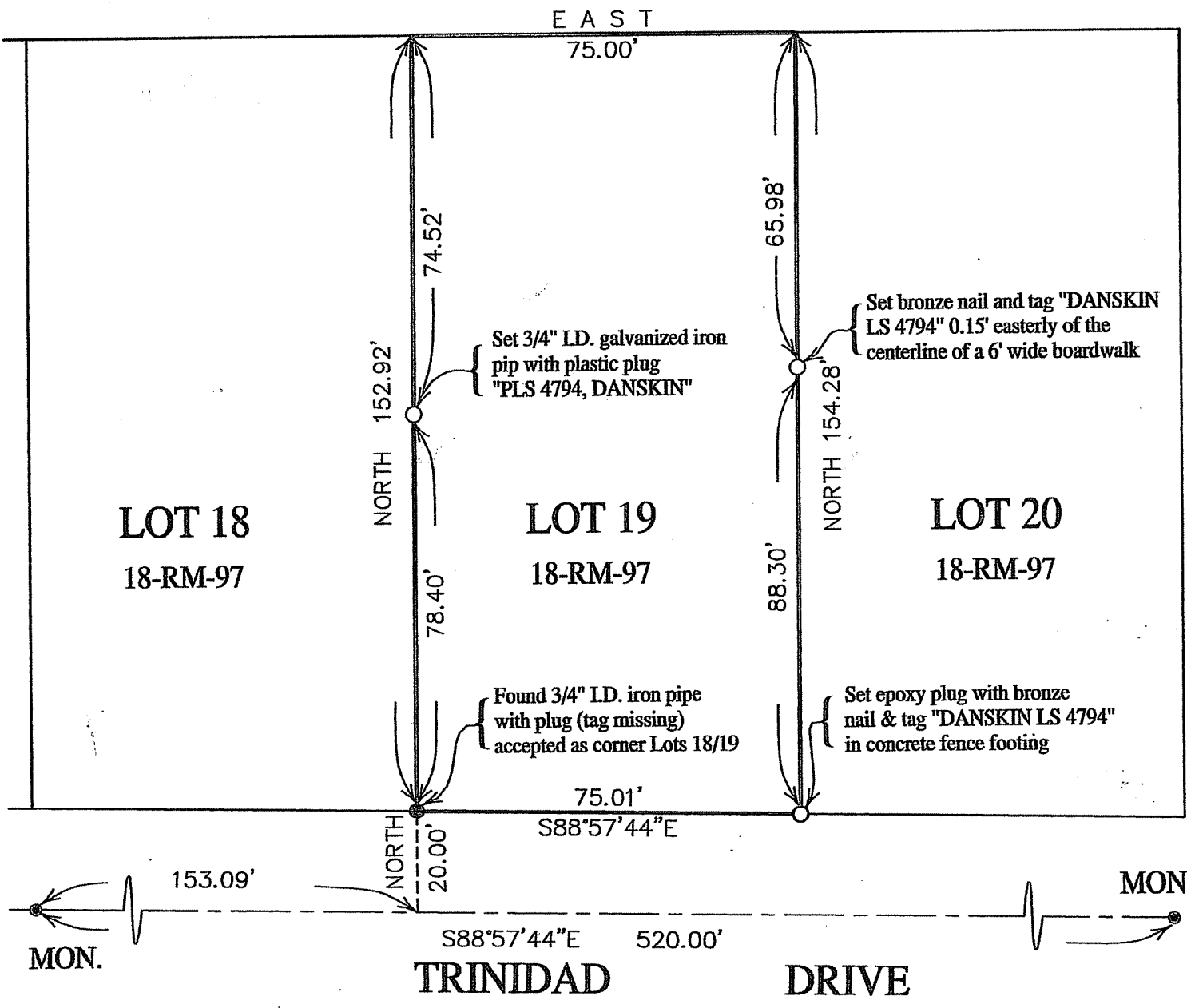
and examined and filed FEBRUARY 24, 2011

Signed [Signature] P.L.S. or R.C.E. No. 7128

Title COUNTY SURVEYOR



County Surveyor's Comment \_\_\_\_\_



# CORNER RECORD

OF A PORTION OF LOT 19  
 MAP OF PARADISE CAY-SOUTH-UNIT TWO  
 RECORDED IN BOOK 18 OF MAPS AT PAGE 97  
 MARIN COUNTY RECORDS  
 CITY OF TIBURON

MARIN COUNTY CALIFORNIA  
 25 JANUARY 2011 SURVEY NO 967

FOR: ROBERT GRIFFIN OF GRIFFIN ENTERPRISE GROUP, INC.

PREPARED BY  
**PHILLIP A. DANSKIN & ASSOCIATES**  
 LAND SURVEYOR  
 SONOMA, CALIFORNIA  
 PHONE: (707) 938-2520

