

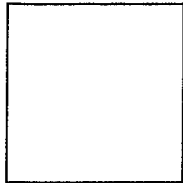
CORNER RECORD

APN 038-391-33, 34

Document No. _____

City of Tiburon County of Marin, California

Brief Legal Description Lots 21 & 22, 18 RM 97



CORNER TYPE

COORDINATES
(Optional)

Government Corner Control
Meander Property
Rancho Other
Date of Survey Sept. 16, 2005

N. _____
E. _____
Zone _____ Datum _____
Elev. _____

Corner- Left as found Found and tagged Established Reestablished Rebuilt

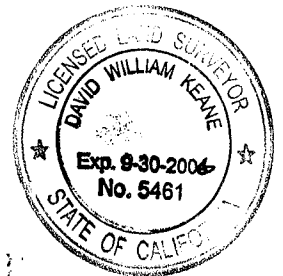
Identification and type of corner found: Evidence used to identify or procedure to establish or reestablish the corner: Established property corners on Lots 21 & 22 per found std. street monuments as shown on herein sht. 2 and per "Map of Paradise Cay - South Cay - Unit 2", recorded in Vol. 18 of Maps, Page 97, County of Marin.

A description of the physical condition of the monument as found and as set or reset: Set 1/2" bar w/ plastic cap, LS 5461 at locations shown on herein sht. 2. Found 3/4" iron pipe w/ nail and standard street monuments, at locations shown on herein sht. 2.

SURVEYOR'S STATEMENT

This Corner Record was prepared by me or under my direction in conformance with the Land Surveyors Act on Sept. 21, 2005.

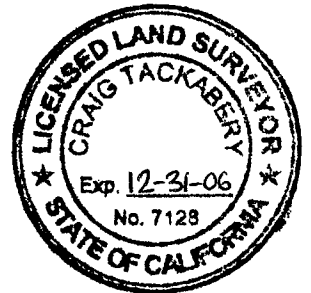
Signed David W. Keane PLS Number 5461



COUNTY SURVEYOR'S STATEMENT

This Corner Record was received SEPT. 28, 2005 and examined and filed OCTOBER 25, 2005.

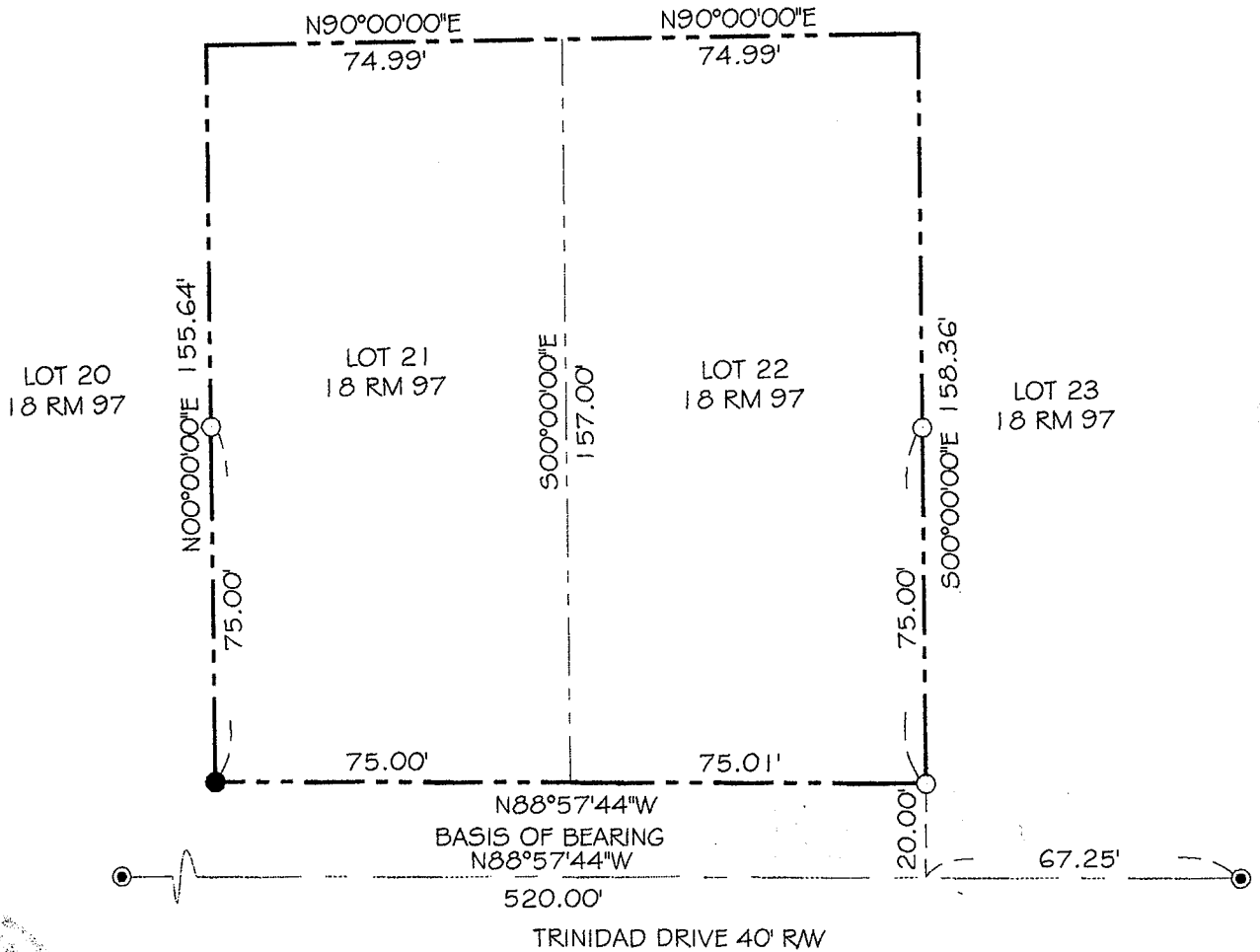
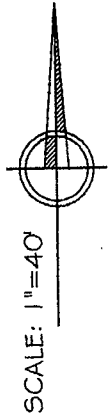
Signed _____ Title COUNTY SURVEYOR



County Surveyor's Comments _____

NOTE:

1. ALL DIMENSIONS SHOWN HEREIN ARE PER 18 RM 97 UNLESS OTHERWISE NOTED.
2. ALL DISTANCES AND DIMENSIONS ARE IN FEET AND DECIMALS THEREOF.
3. EASEMENTS IF ANY ARE NOT SHOWN.
4. APN. 38-391-33, 34.



LEGEND:

- SET 1/2" BAR W/ PL. CAP LS 546 OR AS SHOWN
- FOUND STD. STREET MONUMENT
- FOUND 3/4" IP WITH NAIL

EXHIBIT "A"

BRACKEN & KEANE

Civil Engineers & Land Surveyors

5710 Paradise Drive, Ste. 8

Corte Madera, CA 94925

tel: (415) 927-8801 fax: (415) 927-8803