

CORNER RECORD

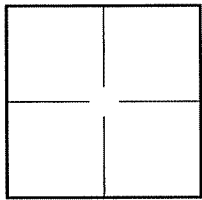
Document Number _____

City of UNINCORPORATED

County of MARIN, California

Brief Legal Description LOT 13, 17 M 86

A.P. NO. 038-391-13



CORNER TYPE

Government Corner Control
Meander Property
Rancho Other
Date of Survey JULY 7, 2010

COORDINATES (Optional)

N. _____
E. _____
Zone _____ NAD27 NAD83
NAD83 Epoch _____
Elev. _____
Vet. Datum: NGVD29 NAVD88
Meas. Units: Metric Imperial

Corner - Left as found Found and tagged Established Reestablished Rebuilt

Identification and type of corner found: Evidence used to identify or procedure used to establish or reestablish the corner:

FOUND (3) STANDARD MARIN COUNTY MONUMENTS IN MONUMENT WELLS ALONG THE CENTERLINE OF TRINIDAD DRIVE IDENTIFIED AS MONUMENTATION SET PER 17 MAPS 86.

A description of the physical condition of the monument as found and as set or reset: _____

- 1. SET (4) 3/4 IRON PIPES, WITH PLASTIC PLUG & TACK, TAGGED "LS 7539"
- 2. SET (1) 3/4" BRASS TAG & TACK, TAGGED "LS 7539"

SURVEYOR'S STATEMENT

This Corner Record was prepared by me or under my direction in conformance with

the Land Surveyor's Act on AUGUST 5 20 10

Signed [Signature] P.L.S. or R.C.E. No. LS 7539



COUNTY SURVEYOR'S STATEMENT

This Corner Record was received AUGUST 9, 20 10

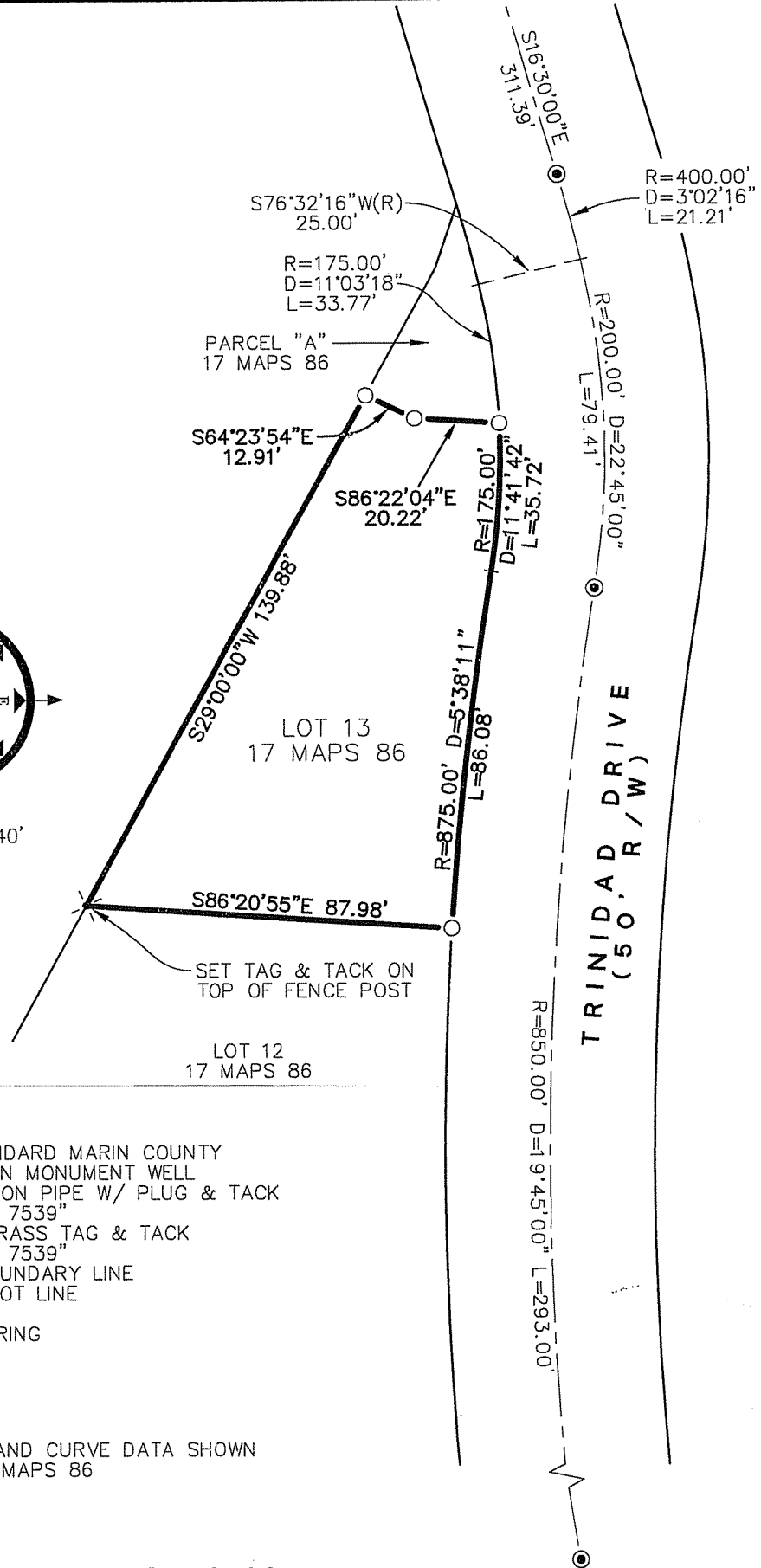
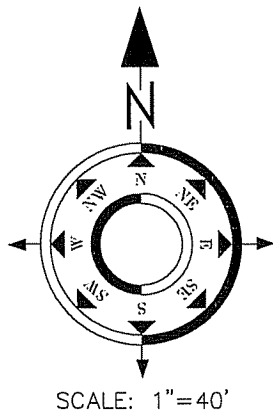
and examined and filed SEPTEMBER 7, 2010 20 10

Signed [Signature] P.L.S. or R.C.E. No. 7128

Title COUNTY SURVEYOR



County Surveyor's Comment: _____



LEGEND

- ⊙ FOUND STANDARD MARIN COUNTY MONUMENT IN MONUMENT WELL
- SET 3/4" IRON PIPE W/ PLUG & TACK TAGGED "LS 7539"
- ⊗ SET 3/4" BRASS TAG & TACK TAGGED "LS 7539"
- SUBJECT BOUNDARY LINE
- ==== ADJOINING LOT LINE
- - - - CENTERLINE
- (R) RADIAL BEARING

NOTE:

ALL BEARINGS, DISTANCES AND CURVE DATA SHOWN ARE RECORD DATA PER 17 MAPS 86