

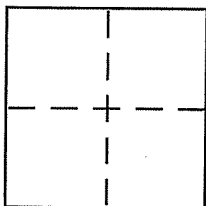
# CORNER RECORD

Document Number 38.352.14

City of TIBURON

County of MARIN, California

Brief Legal Description LOT 6 MAP of Reedland Woods, Unit 2, 14 RM 22



### CORNER TYPE

Government Corner  Control   
 Meander  Property   
 Rancho  Other   
 Date of Survey 2/27/2003

### COORDINATES (Optional)

N. \_\_\_\_\_  
 E. \_\_\_\_\_  
 Zone \_\_\_\_\_ NAD27  NAD83   
 NAD83 Epoch \_\_\_\_\_  
 Elev. \_\_\_\_\_  
 Vert. Datum: NGVD29  NAVD88   
 Meas. Units: Metric  Imperial

Corner - Left as found  Found and tagged  Established  Reestablished  Rebuilt

Identification and type of corner found. Evidence used to identify or procedure used to establish or reestablish the corner:

Reestablish the westerly line of Lot 6 (Common with Lot 5) of the MAP of Reedland Woods, Unit 2, 14 RM 22, from existing street monuments on Carte San Fernando shown upon said 14 RM 22. Refer to sketch on reverse side for details

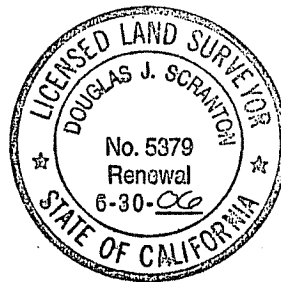
A description of the physical condition of the monument as found and as set or reset: set 1/2" rebar with PLS CAP 5379 AFFIXED to top & driven flush with surrounding grade. Points set at MISC. random intervals along SAID westerly line of Lot 6

### SURVEYOR'S STATEMENT

This Corner Record was prepared by me or under my direction in conformance with

the Land Surveyor's Act on June 15<sup>th</sup> 2004

Signed Douglas J. Scranton P.L.S or R.C.E. No. PLS 5379



### COUNTY SURVEYOR'S STATEMENT

This Corner Record was received JUNE 17, 2004

and examined and filed JULY 1, 2004

Signed [Signature] P.L.S or R.C.E. No. 7128

Title COUNTY SURVEYOR

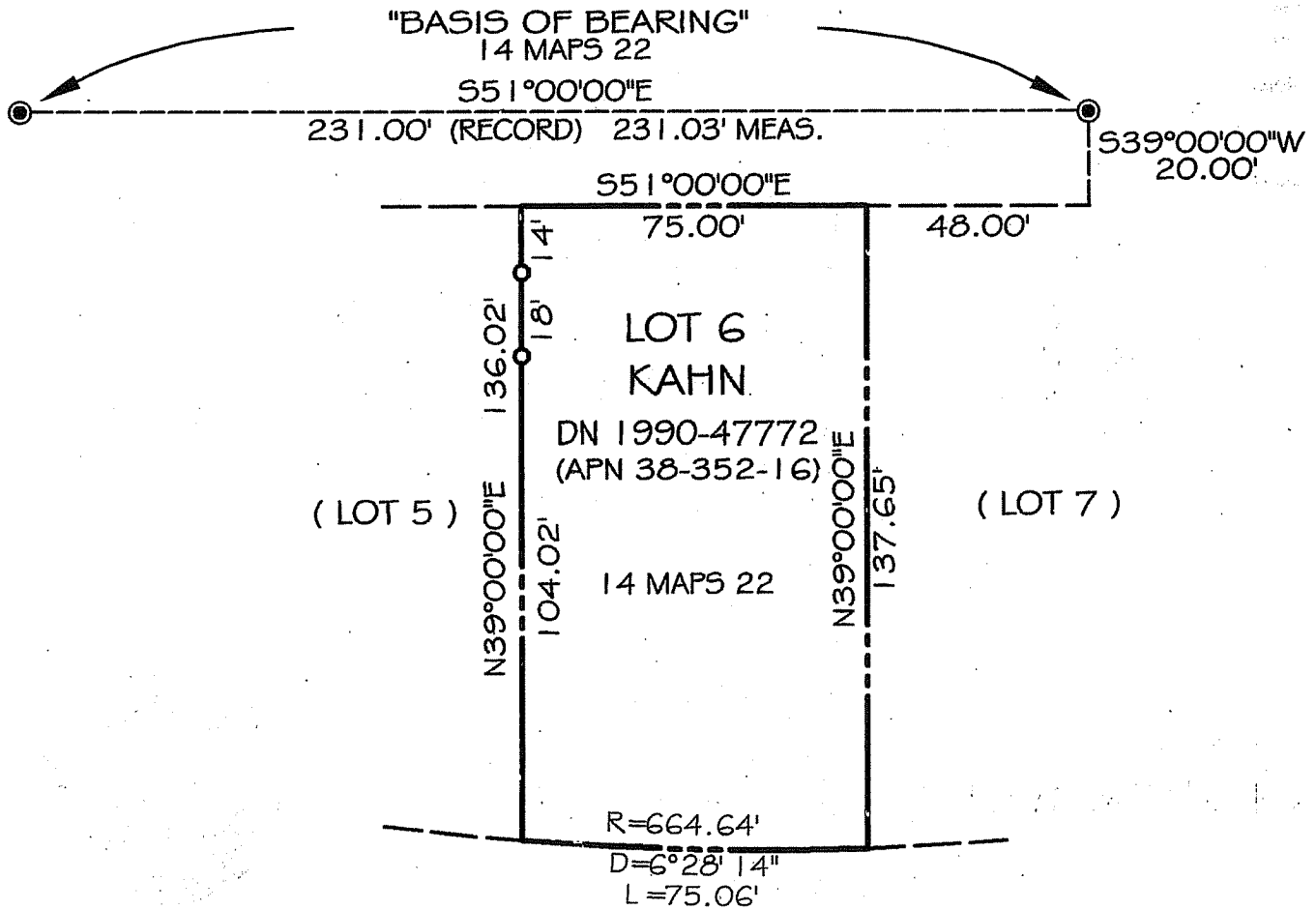
County Surveyor's Comment \_\_\_\_\_



PREPARED BY: DJ SCRANTON SURVEYING, NOVATO, CALIFORNIA



# CORTE SAN FERNANDO (40')



ALL DISTANCES GIVEN IN FEET  
AND DECIMALS THEREOF  
NO EASEMENTS ARE DEPICTED

### BASIS OF BEARINGS

TAKEN AS S51°00'00"E BETWEEN MONUMENTS  
AS SHOWN ON CORTE SAN FERNANDO AND  
AS SHOWN UPON 14 MAPS 22

### LEGEND

o SET 1/2" REBAR/PLS 5379