

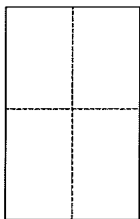
CORNER RECORD

Document Number 038-351-52

City of Tiburon

County of Marin, California

Brief Legal Description Lot 4, as shown on Record of Survey 29 O.S.78



CORNER TYPE

Government Corner Control
Meaneder Property
Rancho Other
Date of Survey 08/27/15

COORDINATES (Optional)

N. _____
E. _____
Zone _____ NAD27 NAD83
NAD83 Epoch _____
Elev. _____
Vert. Datum: NGVD29 NAVD88
Meas. Units: Metric Imperial

Corner - Left as found Found and tagged Established Reestablished Rebuilt

Identification and type of corner found: Evidence used to identify or procedure used to establish or reestablish the corner:

Found City Street Monuments to be in record location, good condition and used to reestablish (4) property corners originally established per Record of Survey, Lot Line Adjustment, filed in Book 29 of Maps, at Page 78, Marin County Records.

A description of the physical condition of the monument as found and as set or reset:

Set (3) 1/2" Iron Pipes tagged LS7237 (including a 6ft Witness Corner) and (1) Brass Tag LS7237 set in concrete at bottom of fence post, at the locations shown on attached exhibit per 29 Maps 78, Marin County Records.

SURVEYOR'S STATEMENT

This Corner Record was prepared by me or under my direction in conformance with the Land Surveyor's Act on September 15th, 2015

Signed Michael E. Ford P.L.S. or ~~R.C.E.~~ No. 7237



COUNTY SURVEYOR'S STATEMENT

This Corner Record was received SEPTEMBER 21, 2015

and examined and filed OCTOBER 28, 2015

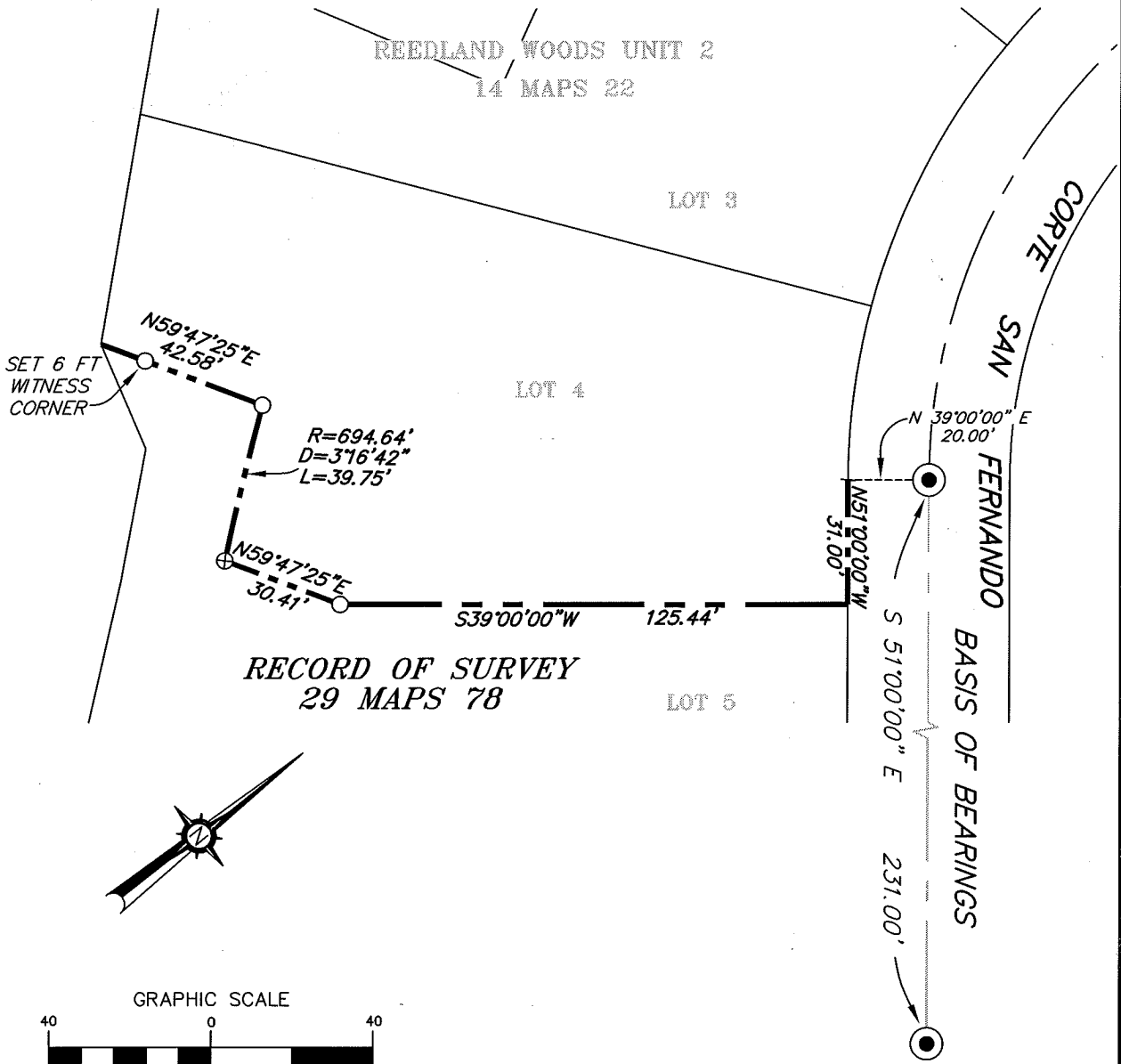
Signed [Signature] P.L.S. or R.C.E. No. 7821

Title County Surveyor

County Surveyor's Comment

NOTES:

ALL DISTANCES SHOWN ARE IN FEET AND DECIMALS THEREOF.
 ALL DIMENSIONS SHOWN HEREON ARE RECORD AND MEASURED
 PER 29 OF MAPS, AT PAGE 78, MARIN COUNTY RECORDS.



**RECORD OF SURVEY
 29 MAPS 78**

BASIS OF BEARINGS

S51°00'00"E BETWEEN FOUND CITY MONUMENTS,
 AS SHOWN ON MAP OF "REEDLAND WOODS UNIT
 2", FILED IN BOOK 14 OF MAPS, AT PAGE 22,
 M.C.R.

LEGEND

- STANDARD CITY MONUMENT
- ⊗ SET BRASS TAG LS7237
- SET 1/2" IRON PIPE LS7237



2300 bethards drive, suite J
 santa rosa, california 95405
 p 707.542.8513 - f 707.542.1825
 www.michaelfordinc.com