

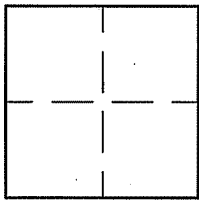
CORNER RECORD

Document Number A.P. 38-342-17

City of TIBURON

County of MARIN, California

Brief Legal Description PARCEL 2 PER 4 P.M. 31



CORNER TYPE                      COORDINATES (Optional)

Government Corner       Control

Meander                       Property

Rancho                       Other

Date of Survey 10/12/09

N. \_\_\_\_\_  
 E. \_\_\_\_\_  
 Zone \_\_\_\_\_ NAD27       NAD83   
 NAD83 Epoch \_\_\_\_\_  
 Elev. \_\_\_\_\_  
 Vert. Datum:      NGVD29       NAVD88   
 Meas. Units:      Metric       Imperial

Corner- Left as found  Found and tagged  Established  Reestablished  Rebuilt

Identification and type of corner found: Evidence used to identify or procedure used to establish or reestablish the corner:

REESTABLISHED THE SOUTHWESTERLY LINE OF PARCEL 2 USING FOUND STREET MONUMENTS ON PASEO MIRASOL PER 4 P.M. 31 AND AS SHOWN ON SHEET 2.

A description of the physical condition of the monument as found and as set or reset: SEE SHEET 2.

SURVEYOR'S STATEMENT

This Corner Record was prepared by me or under my direction in conformance with

the Land Surveyor's Act on OCTOBER 15, 2009

Signed Lawrence P. Doyle P.L.S. or R.C.E. No. P.L.S. 4694



COUNTY SURVEYOR'S STATEMENT

This Corner Record was received OCTOBER 21, 2009

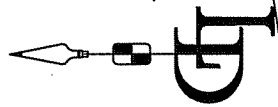
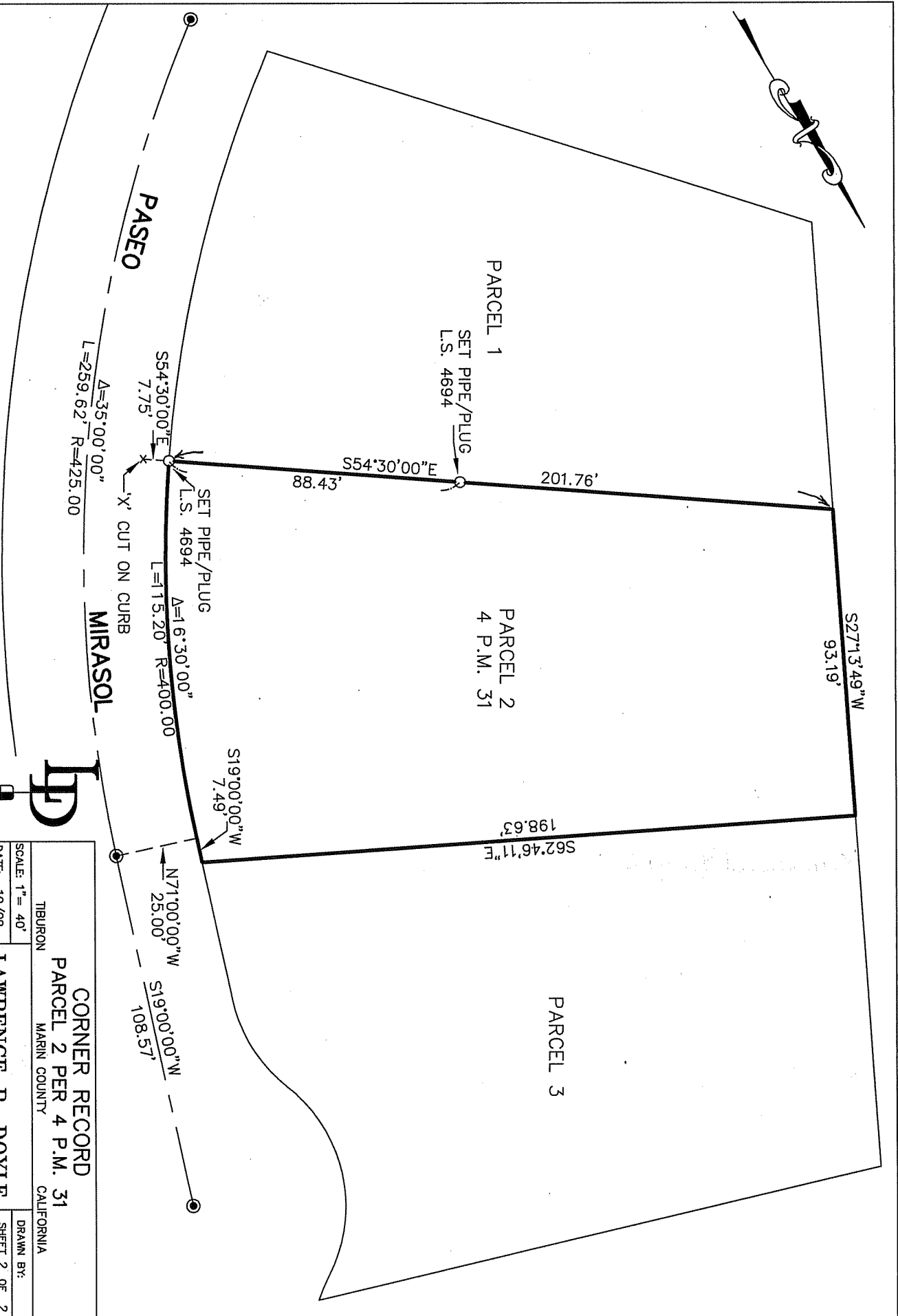
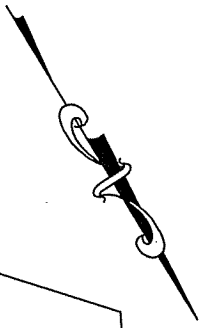
and examined and filed NOVEMBER 16, 2009

Signed [Signature] P.L.S. or R.C.E. No. 7128

Title COUNTY SURVEYOR

County Surveyor's Comment \_\_\_\_\_





**CORNER RECORD**  
**PARCEL 2 PER 4 P.M. 31**  
 TIBURON  
 MARIN COUNTY  
 CALIFORNIA  
**LAWRENCE P. DOYLE**  
 LAND SURVEYOR/CIVIL ENGINEER  
 100 HELENS LANE  
 MILL VALLEY CA 94941 (415-388-9585)

SCALE: 1" = 40'	DRAWN BY:
DATE: 10/09	SHEET 2 OF 2
DRAWING NO. 1951	