

# CORNER RECORD

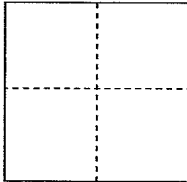
Documented Number 038-342-06

City of Tiburon County of Marin, California

Brief Legal Description Lot 43 Map of Reedland Woods Unit 2 14 RM 22

### CORNER TYPE

#### COORDINATES(Optional)



Government Corner  Control

Meander  Property

Rancho  Other

N. \_\_\_\_\_

E. \_\_\_\_\_

Zone \_\_\_\_\_ NAD27  NAD83

NAD83 Epoch \_\_\_\_\_

Elevation \_\_\_\_\_

Date of Survey February 12, 2013

Vert. Datum: NGVD 29  NADV88

Meas. Units: Metric  Imperial

Corner- Left as found  Found and tagged  Established  Reestablished  Rebuilt

Identification and type of corner found: Evidence used to identify or procedure used to establish or reestablish the corner:

**Reestablish the side lines and rear line to Lot 43, Map of Reedland Woods, Unit 2, 14 RM 22, from existing standard street monuments on Paseo Mirasol. The street monuments used for this survey are depicted upon the said map of Reedland Woods and are shown upon the sketch on the reverse side. Refer to the sketch on reverse side for the details of points either set or found as a result of this retracement survey.**

A description of the physical condition of the monument as found and as set or reset

**Set one half inch rebar with yellow plastic cap affixed to the top of the rebar and driven flush to the surrounding grade. The cap is stamped "Scranton, PLS 5379". Points were set at random intervals along the side lot lines and a four foot offset line was established for the Easterly and the rear lot line. See sketch on reverse side for specific location of the points set as a result of this survey.**

### SURVEYOR'S STATEMENT

This Corner Record was prepared by me or under my direction in conformance with

the Land Surveyor's Act on February 15<sup>th</sup>, 2013

Signed Douglas J. Scranton P.L.S. or R.C.E. No.: PLS 5379



### COUNTY SURVEYOR'S STATEMENT

This Corner Record was received FEBRUARY 19, 2013 and examined

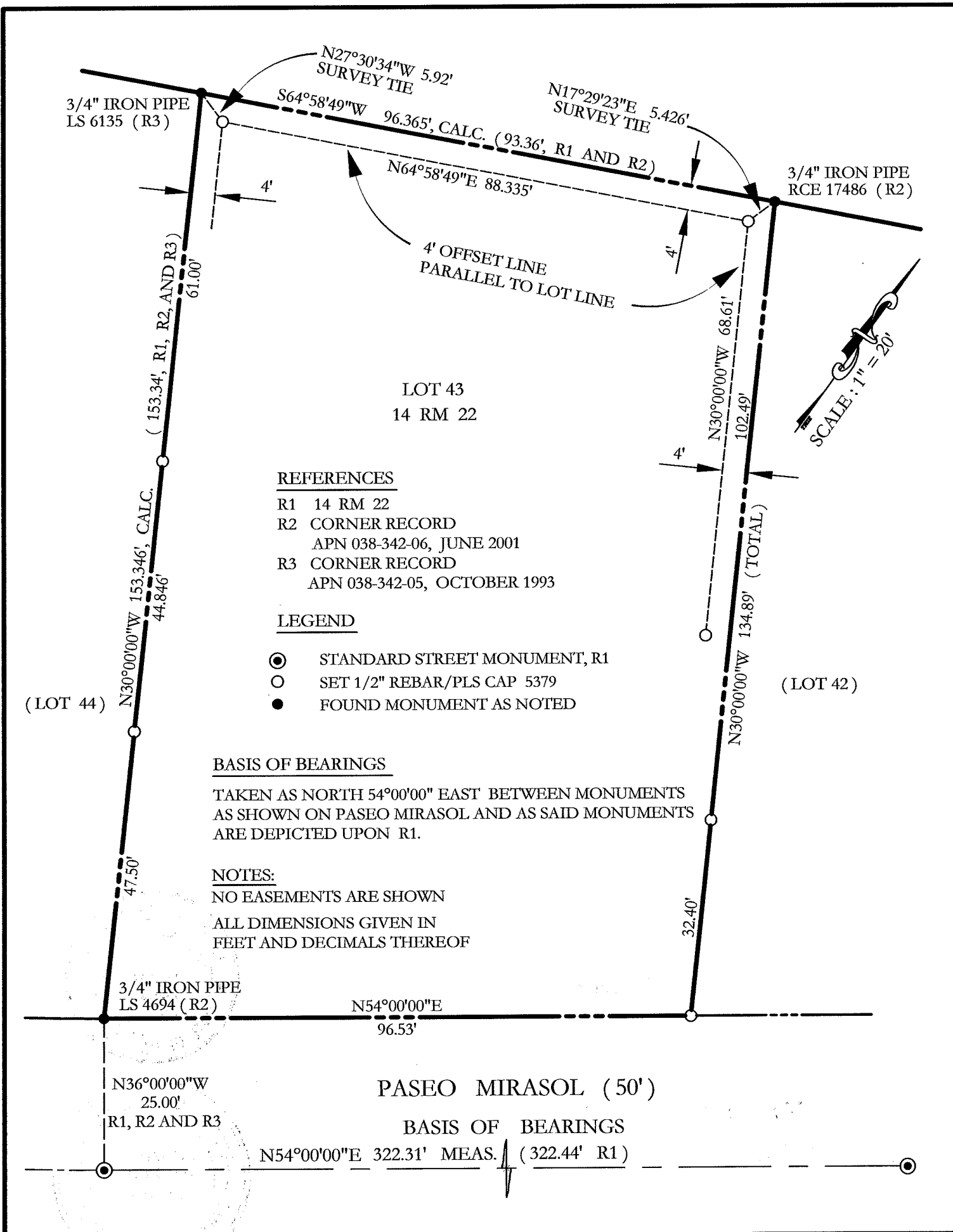
and filed MARCH 28, 2013

Signed Richard G. Simonitch P.L.S. or R.C.E. No.: 7821



Title DEPUTY COUNTY SURVEYOR

County Surveyor's Comment



LOT 43  
14 RM 22

REFERENCES

- R1 14 RM 22
- R2 CORNER RECORD  
APN 038-342-06, JUNE 2001
- R3 CORNER RECORD  
APN 038-342-05, OCTOBER 1993

LEGEND

- ⊙ STANDARD STREET MONUMENT, R1
- SET 1/2" REBAR/PLS CAP 5379
- FOUND MONUMENT AS NOTED

BASIS OF BEARINGS

TAKEN AS NORTH 54°00'00" EAST BETWEEN MONUMENTS AS SHOWN ON PASEO MIRASOL AND AS SAID MONUMENTS ARE DEPICTED UPON R1.

NOTES:

- NO EASEMENTS ARE SHOWN
- ALL DIMENSIONS GIVEN IN FEET AND DECIMALS THEREOF

(LOT 44)

(LOT 42)

3/4" IRON PIPE  
LS 6135 (R3)

3/4" IRON PIPE  
RCE 17486 (R2)

3/4" IRON PIPE  
LS 4694 (R2)

N36°00'00"W  
25.00'  
R1, R2 AND R3

N54°00'00"E  
96.53'

PASEO MIRASOL (50')

BASIS OF BEARINGS  
N54°00'00"E 322.31' MEAS. (322.44' R1)

SCALE: 1" = 20'

N27°30'34"W 5.92'  
SURVEY TIE

S64°58'49"W 96.365', CALC. (93.36', R1 AND R2)

N17°29'23"E 5.426'  
SURVEY TIE

N64°58'49"E 88.335'

61.00'  
(153.34', R1, R2, AND R3)

N30°00'00"W 153.346', CALC.  
44.846'

47.50'

4' OFFSET LINE  
PARALLEL TO LOT LINE

N30°00'00"W 68.61'  
102.49'

N30°00'00"W 134.89' (TOTAL)

32.40'