

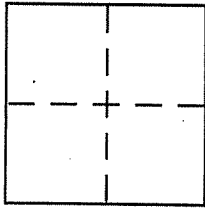
CORNER RECORD

Document Number A.P. 038-342-06

City of TIBURON

County of MARIN, California

Brief Legal Description LOT 43 14 RM 22



CORNER TYPE

Government Corner Control
Meander Property
Rancho Other
Date of Survey 6/5/01

COORDINATES (Optional)

N. _____
E. _____
Zone _____ NAD27 NAD83
NAD83 Epoch _____
Elev. _____
Vert. Datum: NGVD29 NAVD88
Meas. Units: Metric Imperial

Corner - Left as found Found and tagged Established Reestablished Rebuilt

Identification and type of corner found: Evidence used to identify or procedure used to establish or reestablish the corner:

REESTABLISHED THE PROPERTY CORNER
FROM STREET MONUMENTS

A description of the physical condition of the monument as found and as set or reset:

SEE PAGE 2

SURVEYOR'S STATEMENT

This Corner Record was prepared by me or under my direction in conformance with

the Land Surveyor's Act on 7/13/01

Signed Lawrence P Doyle P.L.S or R.C.E. No. PLS 4694



COUNTY SURVEYOR'S STATEMENT

This Corner Record was received 1-3-2002

and examined and filed 1-8-2002

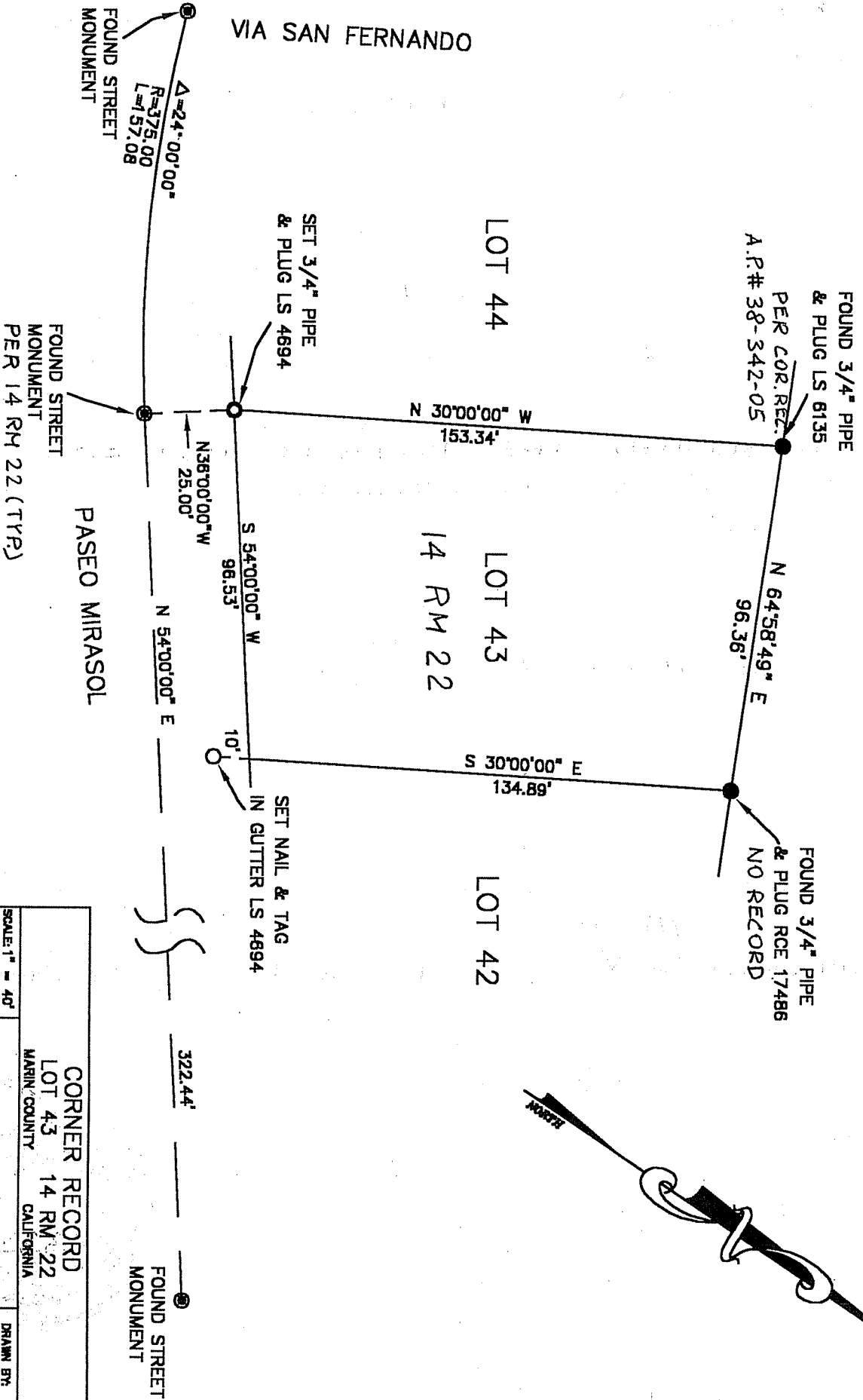
Signed Ce P.L.S or R.C.E. No. 7128

Title DEPUTY

County Surveyor's Comment _____



VIA SAN FERNANDO



CORNER RECORD	
LOT 43 14 RM 22	
MARIN COUNTY CALIFORNIA	
SCALE: 1" = 40'	DRAWN BY:
DATE: 8/5/01	SHEET 1 OF 1
LAWRENCE P. DOYLE	
LAND SURVEYOR/CIVIL ENGINEER	
P.O. BOX 1809 MILL VALLEY CA 94942 (415-388-9585)	
DRAWING NO. 940-01	