

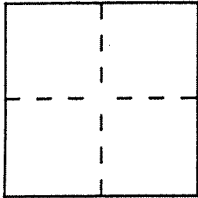
CORNER RECORD

Document Number A.P. 38-341-02

City of TIBURON

County of MARIN, California

Brief Legal Description LOT 50 14 R.M. 22



CORNER TYPE

Government Corner Control
Meander Property
Rancho Other
Date of Survey JUNE 15, 2000

COORDINATES
(Optional)

N. _____
E. _____
Zone _____ Datum _____
Elev. _____

Corner — Left as found Found and tagged Established Reestablished Rebuilt

Identification and type of corner found: Evidence used to identify or procedure used to establish or reestablish the corner:

REESTABLISHED THE PROPERTY CORNERS FROM
THE STREET MONUMENTS SHOWN ON 4 R.M. 22
(SEE PAGE 2)

A description of the physical condition of the monument as found and as set or reset:

SET 3/4" PIPES AND PLUGS STAMPED P.L.S. 4694

SURVEYOR'S STATEMENT

This Corner Record was prepared by me or under my direction in conformance with the Land Surveyors' Act on JUNE 23 2000.

Signed Lawrence P. Doyle L.S. or R.C.E. Number P.L.S. 4694



COUNTY SURVEYOR'S STATEMENT

This Corner Record was received July 19, 2000 and examined and filed July 21, 2000

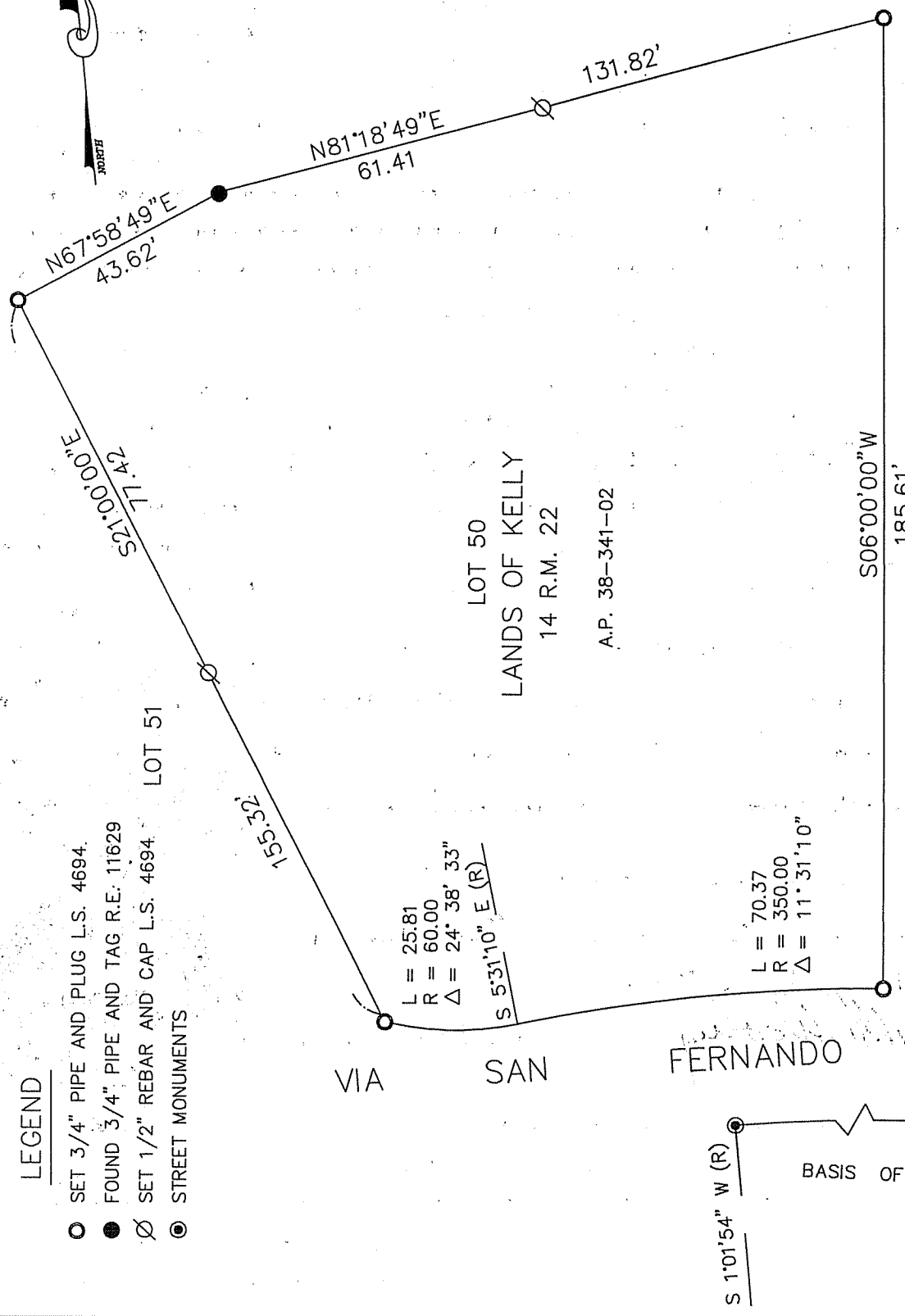
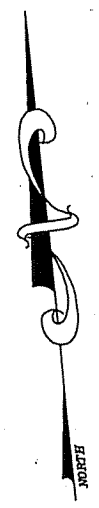
Signed John M. Woolley Title DEPUTY



County Surveyor's Comment _____

LEGEND

- SET 3/4" PIPE AND PLUG L.S. 4694.
- FOUND 3/4" PIPE AND TAG R.E. 11629
- ⊗ SET 1/2" REBAR AND CAP L.S. 4694
- ◎ STREET MONUMENTS



LOT 50
LANDS OF KELLY
14 R.M. 22
A.P. 38-341-02

LOT 49

VIA SAN FERNANDO

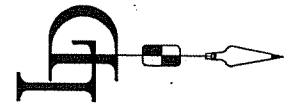
S 1°01'54" W (R)

BASIS OF BEARING

L = 152.97'
R = 325.00'
Δ = 26° 58' 06"

L = 70.37'
R = 350.00'
Δ = 11° 31' 10"

L = 25.81'
R = 60.00'
Δ = 24° 38' 33"
S 5°31'10" E (R)



CORNER RECORD	
TIBURON	MARIN COUNTY CALIFORNIA
LOT 50	14 R.M. 22
SCALE: 1" = 30'	DRAWN BY: SHEET 1 OF 1
DATE: 6/14/00	LAWRENCE P. DOYLE
	LAND SURVEYOR/CIVIL ENGINEER
	P.O. BOX 1609 MILL VALLEY CA 94942 (415-388-9585)
	DRAWING NO. 825-00