

CORNER RECORD

County of Marin, California

Document Number APN 038-341-01, 038-361-04

Brief Legal Description: Common line between Lot 51 and Lot 52, "Reedland Woods Unit 2" recorded in Book 14 of Record Maps at Page 22, Marin County Records.

CORNER TYPE

Government Corner Control
 Meander Property
 Rancho Other
 Date of Survey June, 1999

COORDINATES

(Optional)

N. _____
 E. _____
 Zone _____ Datum _____
 Elev. _____

Corner --Left as found Found and tagged Established Reestablished Rebuilt

Identification and type of corner found: Evidence used to identify or procedure used to establish or reestablish the corner.

See Sheet two.

A Description of the physical condition of the monument as found and as set or reset.

See Sheet two.

SURVEYOR'S STATEMENT

This Corner Record was prepared by me or under my direction in conformance with the Land Surveyor's Act on February 21, 2000.

Signed Linda Anne Carruthers P.L.S. 7053



COUNTY SURVEYOR'S STATEMENT

This Corner Record was received February 29, 2000 and examined and filed March 1, 2000.

Signed John M. Woolley Title Deputy



County Surveyor's Comments _____

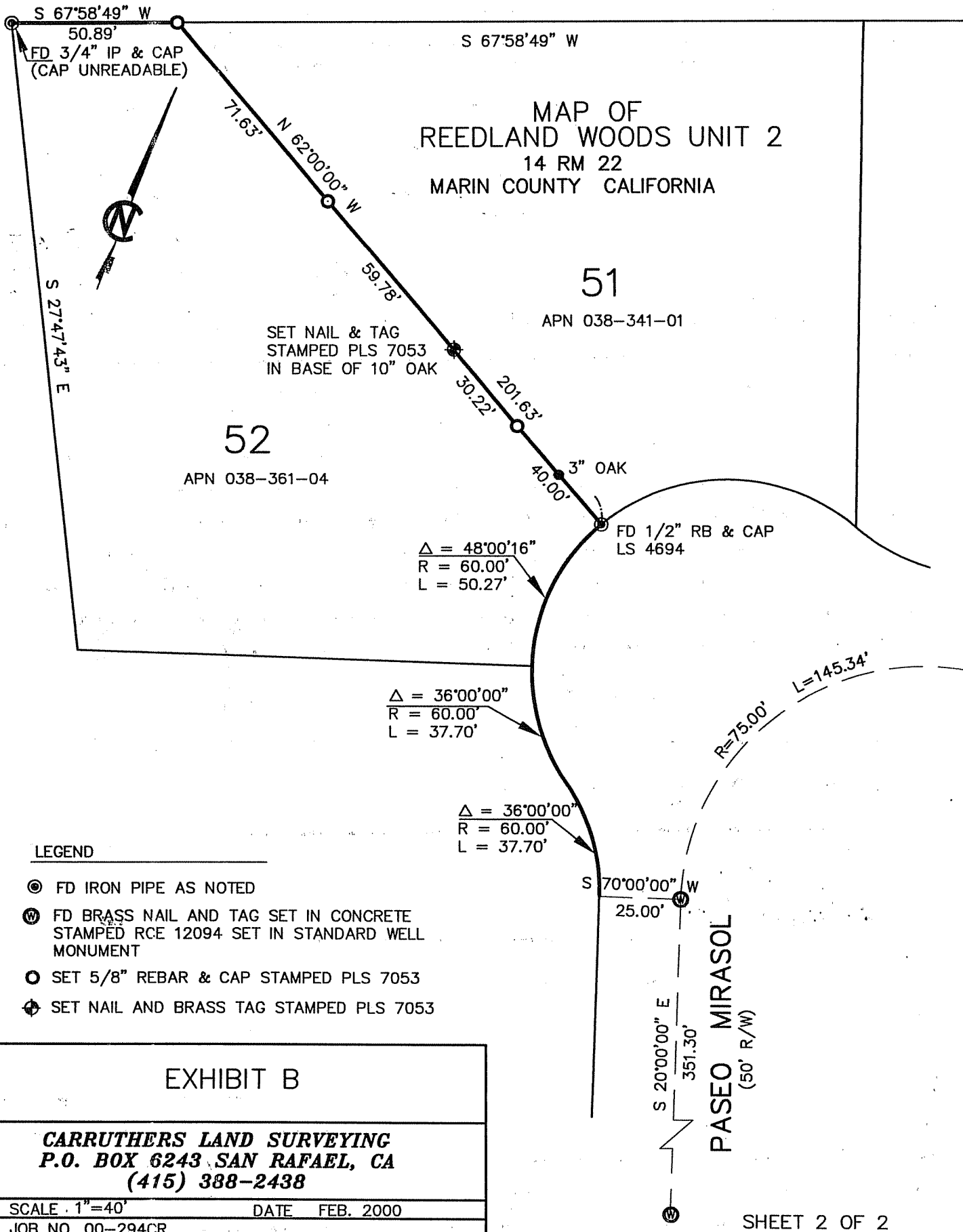
MAP OF
 REEDLAND WOODS UNIT 2
 14 RM 22
 MARIN COUNTY CALIFORNIA

51

APN 038-341-01

52

APN 038-361-04



LEGEND

- ⊙ FD IRON PIPE AS NOTED
- ⊕ FD BRASS NAIL AND TAG SET IN CONCRETE STAMPED RCE 12094 SET IN STANDARD WELL MONUMENT
- SET 5/8" REBAR & CAP STAMPED PLS 7053
- ⊕ SET NAIL AND BRASS TAG STAMPED PLS 7053

EXHIBIT B

CARRUTHERS LAND SURVEYING
 P.O. BOX 6243 SAN RAFAEL, CA
 (415) 388-2438

SCALE 1"=40' DATE FEB. 2000
 JOB NO. 00-294CR

PASEO MIRASOL
 (50' R/W)