

CORNER RECORD

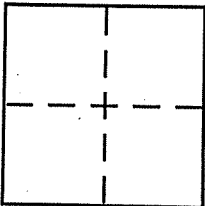
Document Number 2006-006309

City of TIBURON

County of _____, California

Brief Legal Description LOT 22

Bk 14 pg. 22



CORNER TYPE

Government Corner Control
 Meander Property
 Rancho Other
 Date of Survey 06-15-06

COORDINATES (Optional)

N. _____
 E. _____
 Zone _____ NAD27 NAD83
 NAD83 Epoch _____
 Elev. _____
 Vert. Datum: NGVD29 NAVD88
 Meas. Units: Metric Imperial

Corner - Left as found Found and tagged Established Reestablished Rebuilt

Identification and type of corner found: Evidence used to identify or procedure used to establish or reestablish the corner:

SET AND FOUND POINTS AS SHOWN ON REVERSE
IN CONFORMANCE WITH STANDARD STREET
MONUMENTS IN VIA CAPISTRANO

A description of the physical condition of the monument as found and as set or reset:

SEE REVERSE SIDE

SURVEYOR'S STATEMENT

This Corner Record was prepared by me or under my direction in conformance with

the Land Surveyor's Act on 6/20/06

Signed [Signature] P.L.S. or R.C.E. No. 5814

COUNTY SURVEYOR'S STATEMENT

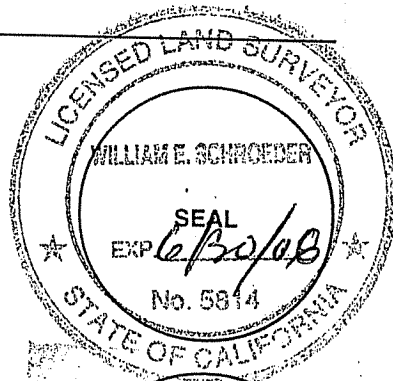
This Corner Record was received JULY 5, 2006

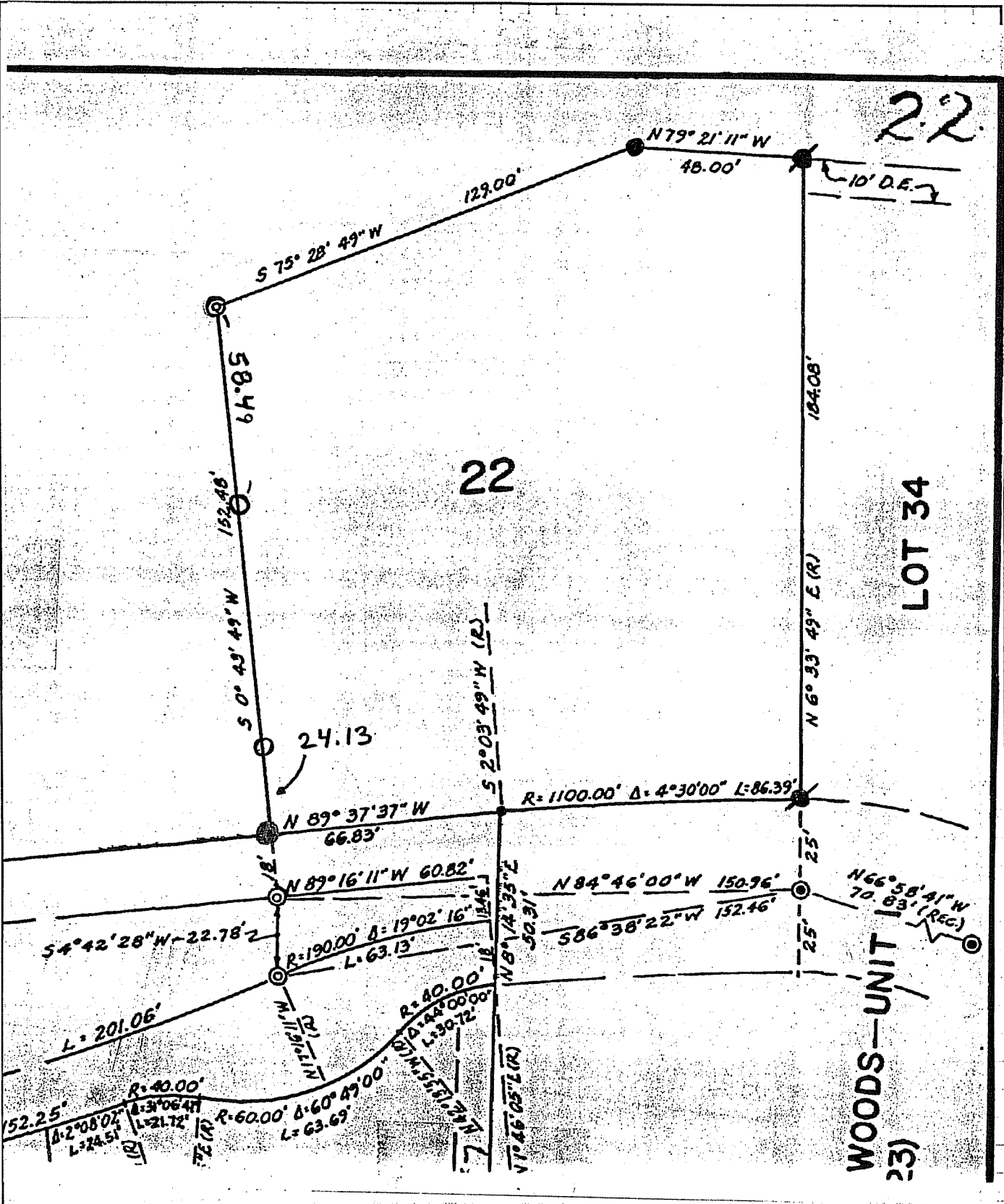
and examined and filed AUGUST 7, 2006

Signed [Signature] P.L.S. or R.C.E. No. 7128

Title COUNTY SURVEYOR

County Surveyor's Comment _____





- SET 3/4" IRON PIPE & CAP LS 5814
- FOUND 3/4" IRON PIPE RCE 11629, NO RECORD
- FOUND 3/4" IRON PIPE LS 5296, PER CORNER RECORD APN 38-312-01