

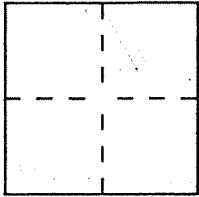
CORNER RECORD

Document Number A.P.N. 38-332-06

City of TIBURON

County of MARIN, California

Brief Legal Description PARCEL 1 PER 12 P.M. 22



CORNER TYPE

Government Corner Control
Meander Property
Rancho Other
Date of Survey 6-18-96

COORDINATES (Optional)

N. _____
E. _____
Zone _____ Datum _____
Elev. _____

Corner — Left as found Found and tagged Established Reestablished Rebuilt

Identification and type of corner found: Evidence used to identify or procedure used to establish or reestablish the corner:

- SEE OVER -

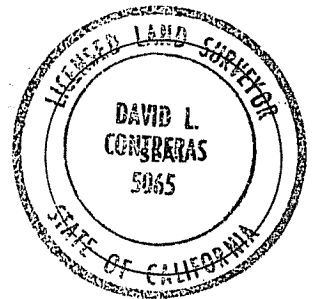
A description of the physical condition of the monument as found and as set or reset:

- SEE OVER -

SURVEYOR'S STATEMENT

This Corner Record was prepared by me or under my direction in conformance with the Land Surveyors' Act on 6-24-96 1996.

Signed David Montes L.S. or R.C.E. Number L.S. 5065



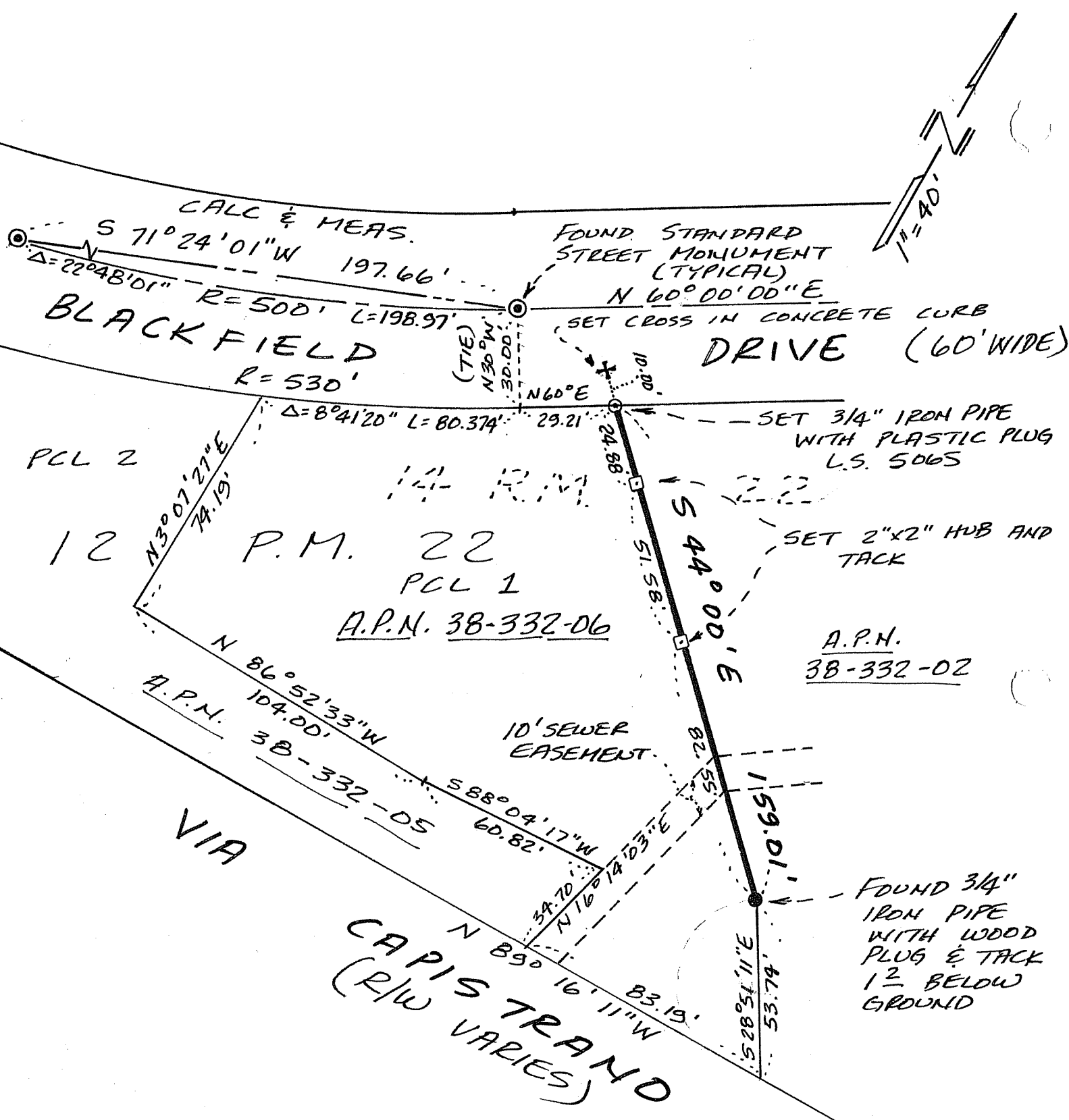
COUNTY SURVEYOR'S STATEMENT

This Corner Record was received JULY 1 1996 and examined and filed 7-2 1996.

Signed [Signature] Title DCS



County Surveyor's Comment _____



VIA
 CAPISTRANO
 (R/W VARIES)