

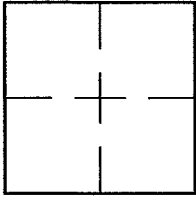
CORNER RECORD

Document Number A.P. 038-331-15

City of TIBURON

County of MARIN, California

Brief Legal Description PARCEL 2 PER 4 P.M. 38



CORNER TYPE                      COORDINATES (Optional)

Government Corner       Control

Meander                       Property

Rancho                       Other

Date of Survey 7/23/15

N. \_\_\_\_\_  
 E. \_\_\_\_\_  
 Zone \_\_\_\_\_ NAD27       NAD83   
 NAD83 Epoch \_\_\_\_\_  
 Elev. \_\_\_\_\_  
 Vert. Datum:      NGVD29       NAVD88   
 Meas. Units:      Metric       Imperial

Corner- Left as found  Found and tagged  Established  Reestablished  Rebuilt

Identification and type of corner found: Evidence used to identify or procedure used to establish or reestablish the corner:  
REESTABLISHED THE COMMON LINE BETWEEN PARCELS 1 AND 2 USING FOUND STREET MONUMENTS IN  
PASEO MIRASOL PER 4 P.M. 38 AND AS SHOWN ON SHEET 2.

A description of the physical condition of the monument as found and as set or reset: SEE SHEET 2.

SURVEYOR'S STATEMENT

This Corner Record was prepared by me or under my direction in conformance with

the Land Surveyor's Act on JULY 24, 2015

Signed Lawrence P. Doyle P.L.S. or R.C.E. No. P.L.S. 4694



COUNTY SURVEYOR'S STATEMENT

This Corner Record was received NOVEMBER 23, 2015

and examined and filed DECEMBER 23, 2015

Signed [Signature] P.L.S. or R.C.E. No. 7821

Title County Surveyor

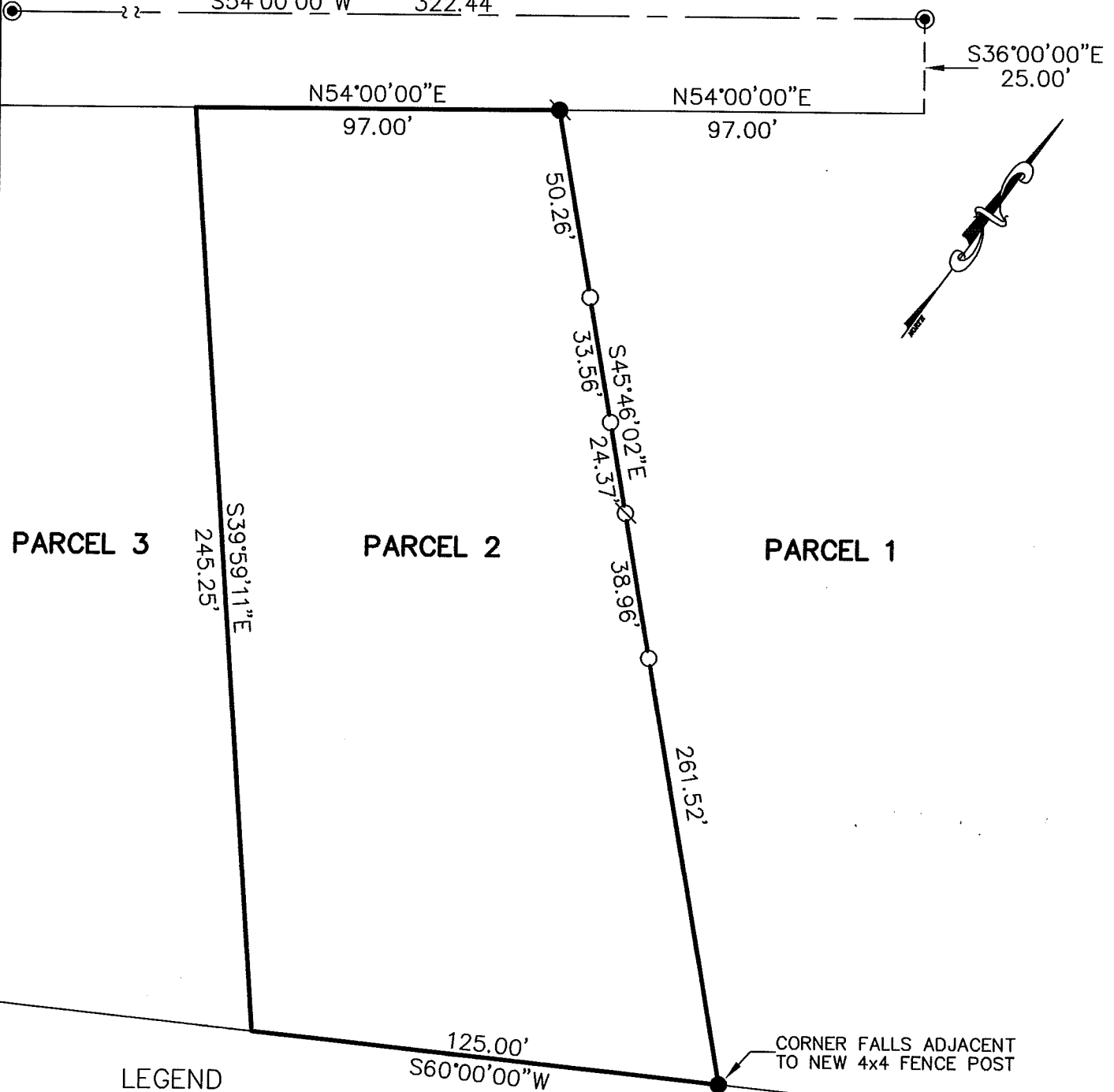


County Surveyor's Comment \_\_\_\_\_

# PASEO MIRASOL

BASIS OF BEARING

S54°00'00"W 322.44'



## LEGEND

- FOUND STREET MONUMENT PER 4 P.M. 38
- FOUND PIPE/TAG RE 10057 PER 4 P.M. 38
- FOUND REBAR/CAP (UNREADABLE)
- SET PIPE/PLUG L.S. 4694
- ⊗ SET NAIL/TAG L.S. 4694 ON WALL



<b>CORNER RECORD</b>		
<b>PARCEL 2 PER 4 P.M. 38</b>		
TIBURON	MARIN COUNTY	CALIFORNIA
SCALE: 1" = 40'	DRAWN BY:	
DATE: 7/24/15	<b>LAWRENCE P. DOYLE</b>	
LAND SURVEYOR/CIVIL ENGINEER		
100 HELENS LANE MILL VALLEY CA 94941 (415-388-9585)		
DRAWING NO.		2602