

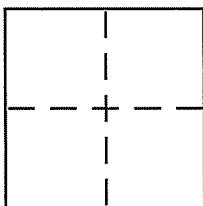
CORNER RECORD

Document Number 038-331-10

City of TIBURON

County of MARIN, California

Brief Legal Description LOT 28, REEDLAND WOODS, UNIT 2 - LARM 22, TIBURON



CORNER TYPE

Government Corner Control
 Meander Property
 Rancho Other
 Date of Survey AUGUST 26, 2003

COORDINATES (Optional)

N. _____
 E. _____
 Zone _____ NAD27 NAD83
 NAD83 Epoch _____
 Elev. _____
 Vert. Datum: NGVD29 NAVD88
 Meas. Units: Metric Imperial

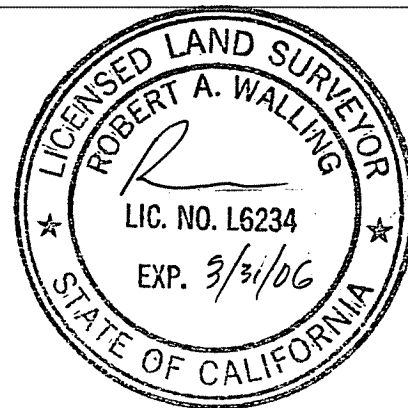
Corner - Left as found Found and tagged Established Reestablished Rebuilt

Identification and type of corner found: Evidence used to identify or procedure used to establish or reestablish the corner:
FOUND 3/4" IRON PIPE WITHOUT TAG IN RECORD LOCATION. USED EXISTING STREET MONUMENTS AND DIMENSIONING TO DETERMINE LOT 28 LOCATION.

A description of the physical condition of the monument as found and as set or reset:
MONUMENTS AND IRON PIPE WERE UNDISTURBED.

SURVEYOR'S STATEMENT

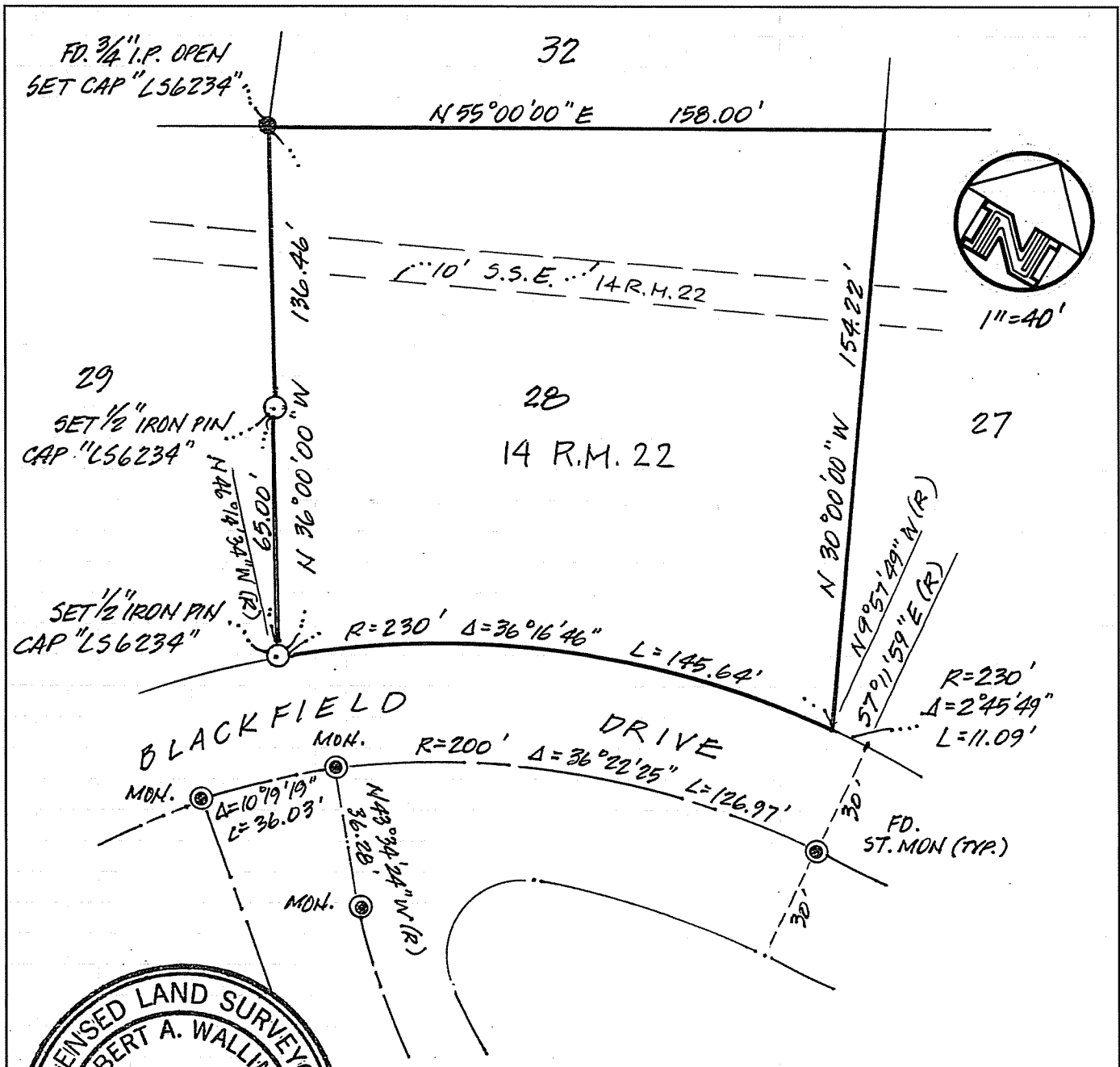
This Corner Record was prepared by me or under my direction in conformance with the Land Surveyor's Act on AUGUST 26 2003
 Signed [Signature] P.L.S or R.C.E. No. 156234



COUNTY SURVEYOR'S STATEMENT

This Corner Record was received SEPTEMBER 3, 2003
 and examined and filed SEPTEMBER 16, 2003
 Signed [Signature] P.L.S or R.C.E. No. 7128
 Title COUNTY SURVEYOR

County Surveyor's Comment _____



SURVEY PLAT
 LANDS OF DUNLOP
 301 BLACKFIELD DR., T1B.

LOT 28, 14 R.M. 22
 REEDLAND WOODS UNIT 2



BOB WALLING TECHNICAL SERVICES
 P.O. Box 1346 • Glen Ellen, CA 95442
 (707) 938-1593 (415) 382-1593

JN. 103-27

AUGUST 2003