

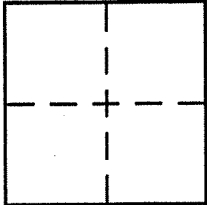
CORNER RECORD

Document Number APN 38-331-03

City of TIBURON

County of _____, California

Brief Legal Description LOT 36, 14 RM 2.2 / 70 PASSED MIRASOL / APN 38-331-03



CORNER TYPE

Government Corner Control
Meander Property
Rancho Other
Date of Survey _____

COORDINATES (Optional)

N. _____
E. _____
Zone _____ NAD27 NAD83
NAD83 Epoch _____
Elev. _____
Vert. Datum: NGVD29 NAVD88
Meas. Units: Metric Imperial

Corner - Left as found Found and tagged Established Reestablished Rebuilt

Identification and type of corner found: Evidence used to identify or procedure used to establish or reestablish the corner:

See Sketch on Back

A description of the physical condition of the monument as found and as set or reset:

See Sketch on Back

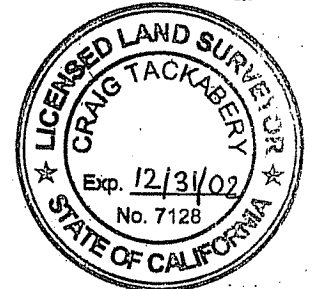
SURVEYOR'S STATEMENT

This Corner Record was prepared by me or under my direction in conformance with the Land Surveyor's Act on March 18, 2002.
Signed Michael A. Brogan P.L.S or R.C.E. No. 15 5767

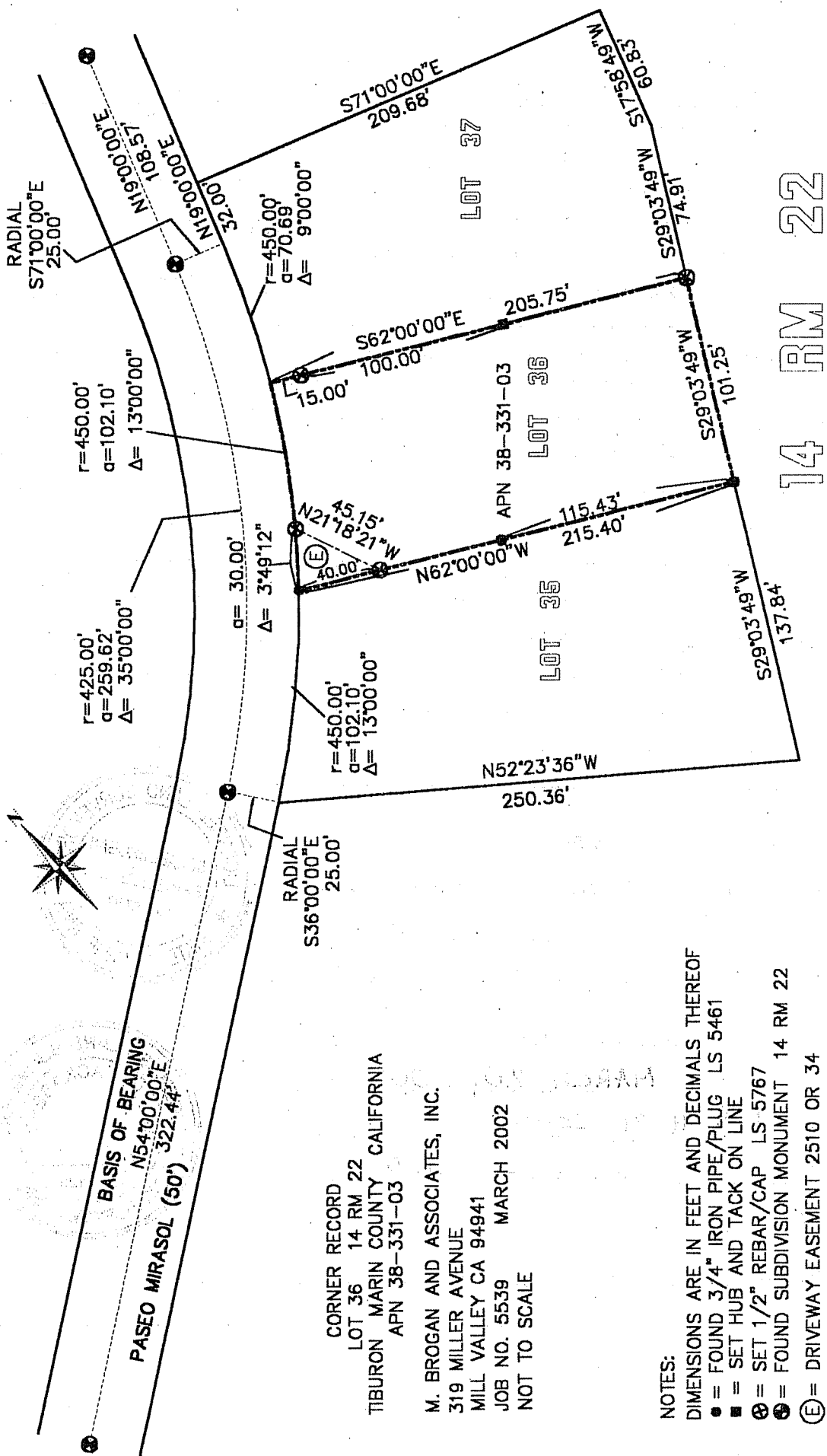


COUNTY SURVEYOR'S STATEMENT

This Corner Record was received MARCH 20, 2002
and examined and filed MARCH 21, 2002
Signed Cey P.L.S or R.C.E. No. 7128
Title DEPUTY



County Surveyor's Comment _____



14 RM 22

CORNER RECORD
 LOT 36 14 RM 22
 TIBURON MARIN COUNTY CALIFORNIA
 APN 38-331-03

M. BROGAN AND ASSOCIATES, INC.
 319 MILLER AVENUE
 MILL VALLEY CA 94941
 JOB NO. 5539 MARCH 2002
 NOT TO SCALE

- NOTES:
 DIMENSIONS ARE IN FEET AND DECIMALS THEREOF
 ● = FOUND 3/4" IRON PIPE/PLUG LS 5461
 ■ = SET HUB AND TACK ON LINE
 ⊗ = SET 1/2" REBAR/CAP LS 5767
 ⊕ = FOUND SUBDIVISION MONUMENT 14 RM 22
 ⊕ = DRIVEWAY EASEMENT 2510 OR 34