

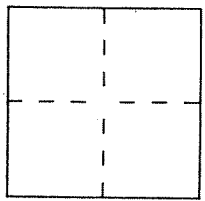
CORNER RECORD

Document Number A.P. # 38-322-19

City of TIBURON

County of MARIN, California

Brief Legal Description LOT 9, 14 RM 22



CORNER TYPE

- Government Corner
- Meander
- Rancho
- Date of Survey _____
- Control
- Property
- Other

COORDINATES (Optional)

N. _____
 E. _____
 Zone _____ Datum _____
 Elev. _____

Corner — Lett as found Found and tagged Established Reestablished Rebuilt

Identification and type of corner found: Evidence used to identify or procedure used to establish or reestablish the corner:
FND. STD. STREET MONS 1/2" BRASS DISK PUNCHED & STAMPED RCE11629,
AS SHOWN ON 14 RM 22, AND FND. 3/4" I.P. TAGGED PLS 5296 AS
SHOWN ON PREVIOUS CORNER RECORD DATED 12-4-00.

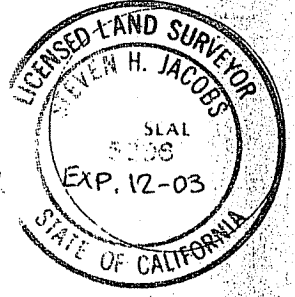
A description of the physical condition of the monument as found and as set or reset:
SET FOUNDATION BAR & TAG PLS 5296 AS SHOWN ON REVERSE.

A.P. # 038-322-19

SURVEYOR'S STATEMENT

This Corner Record was prepared by me or under my direction in conformance with the Land Surveyors' Act on SEPTEMBER 24, 2001.

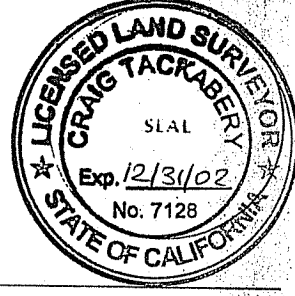
Signed [Signature] L.S. or R.C.E. Number PLS 5296



COUNTY SURVEYOR'S STATEMENT

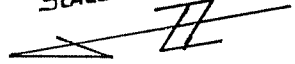
This Corner Record was received OCTOBER 5, 2001 and examined and filed OCTOBER 5, 2001.

Signed [Signature] Title DEPUTY

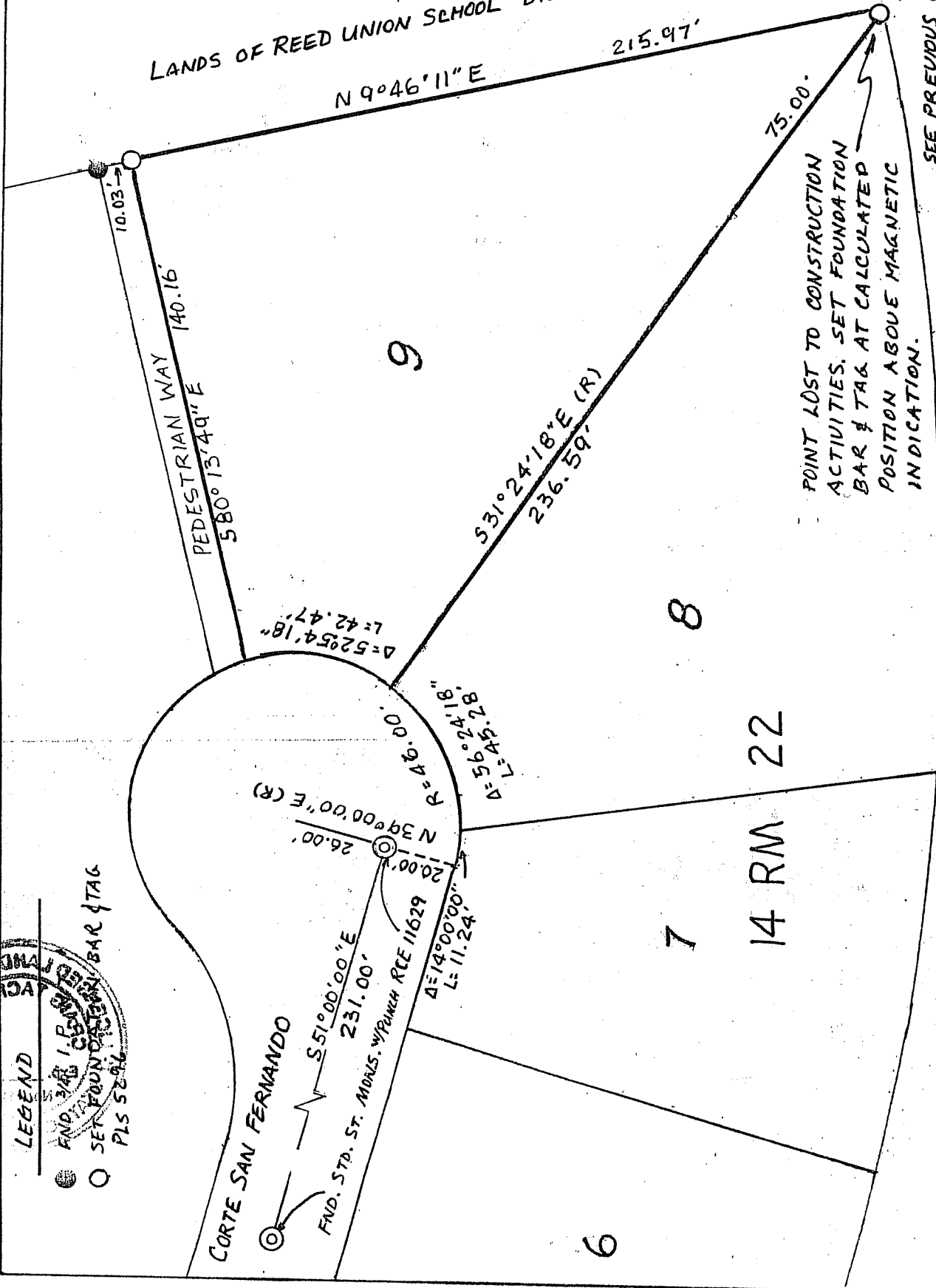


County Surveyor's Comment _____

SCALE: 1" = 40'



LANDS OF REED UNION SCHOOL DISTRICT



POINT LOST TO CONSTRUCTION
ACTIVITIES. SET FOUNDATION
BAR & TAG AT CALCULATED
POSITION ABOVE MAGNETIC
INDICATION.

SEE PREVIOUS CORNER
RECORD DATED
12/4/2000.

LEGEND

- FND. STD. ST. MONLS. W/ PUNCH RCE 11629
- SET FOUNDATION BAR & TAG
- PLS SEE

