

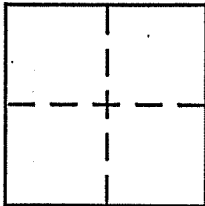
CORNER RECORD

Document Number 1994-039210

City of TIBURON

County of MARIN, California

Brief Legal Description LOT 20 AS SHOWN IN R.M. 14-22



CORNERTYPE

Government Corner Control
 Meander Property
 Rancho Other
 Date of Survey JULY-12-2006

COORDINATES (Optional)

N. _____
 E. _____
 Zone _____ NAD27 NAD83
 NAD83 Epoch _____
 Elev. _____
 Vert. Datum: NGVD29 NAVD88
 Meas. Units: Metric Imperial

Corner - Left as found Found and tagged Established Reestablished Rebuilt

Identification and type of corner found: Evidence used to identify or procedure used to establish or reestablish the corner:

SET AND FOUND POINTS AS SHOWN ON REVERSE
BASED ON STANDARD STREET MONUMENTS IN
VIA CAPISTRANO

A description of the physical condition of the monument as found and as set or reset:

SEE REVERSE (PAGE 2)

SURVEYOR'S STATEMENT

This Corner Record was prepared by me or under my direction in conformance with the Land Surveyor's Act on 7/12/08

Signed [Signature] P.L.S or R.C.E. No. 5814

COUNTY SURVEYOR'S STATEMENT

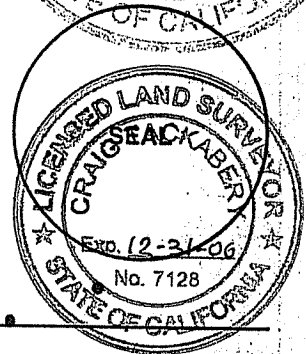
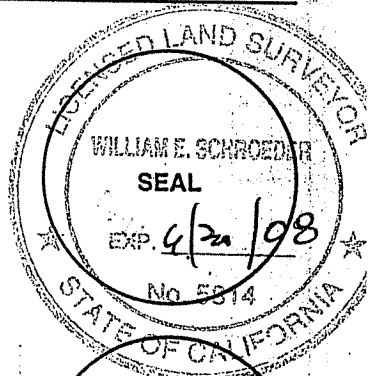
This Corner Record was received JULY 17, 2006

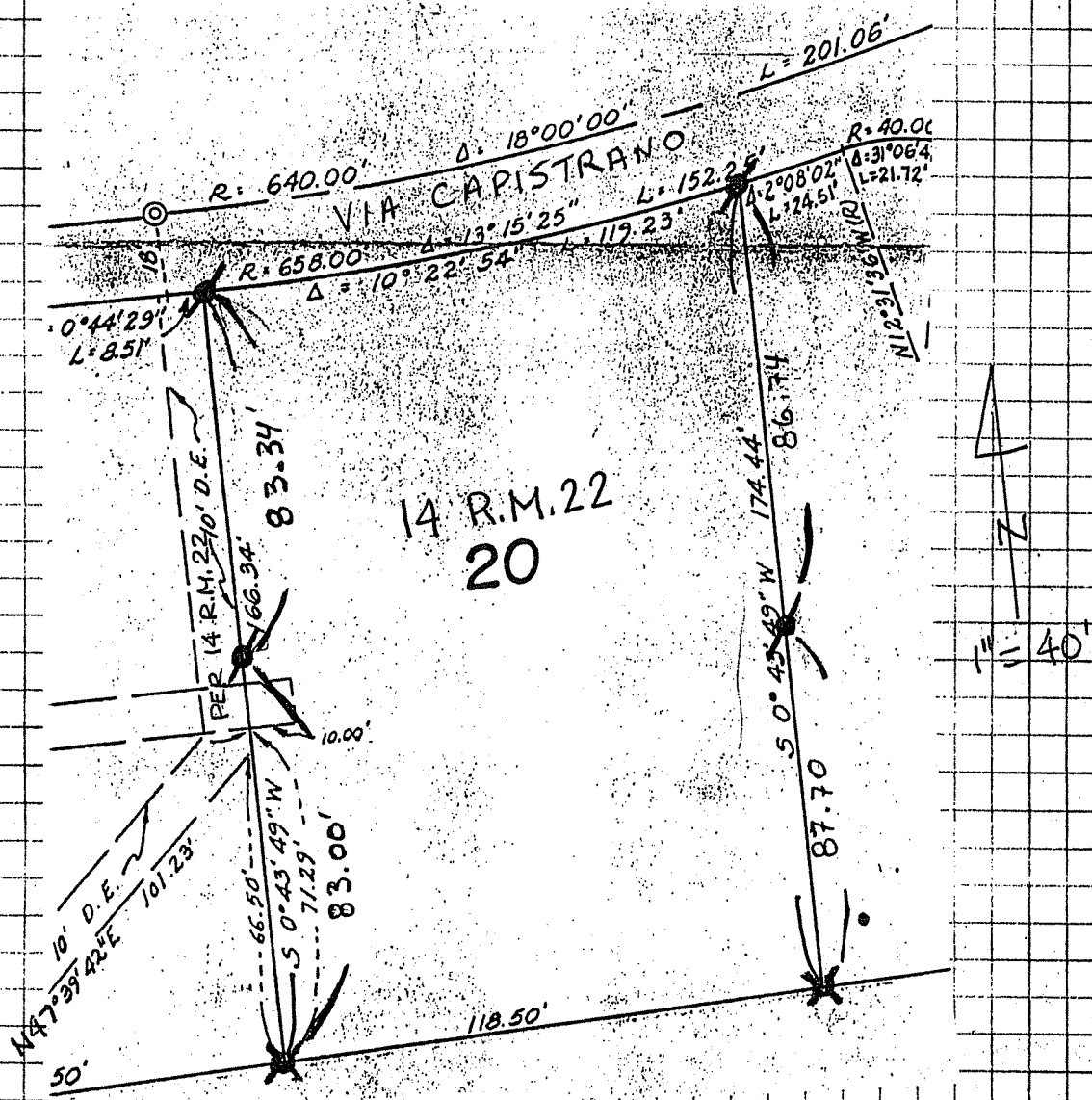
and examined and filed AUGUST 14, 2006

Signed [Signature] P.L.S or R.C.E. No. 7128

Title COUNTY SURVEYOR

County Surveyor's Comment _____





- ⊗ = Found Open 3/4" Iron Pipe
- ⊙ = Set 3/4" Iron Pipe with plastic cap "LS 5814"