

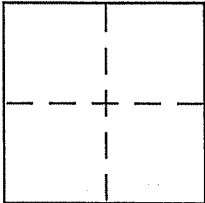
CORNER RECORD

Document Number APN 38-322-01

City of TIBURON

County of MARIN, California

Brief Legal Description LOT 13 OF REEDLAND WOODS, UNIT 2 14 MAPS 22



CORNER TYPE

Government Corner  Control   
Meander  Property   
Rancho  Other   
Date of Survey MAY 12, 2006

COORDINATES (Optional)

N. \_\_\_\_\_  
E. \_\_\_\_\_  
Zone \_\_\_\_\_ NAD27  NAD83   
NAD83 Epoch \_\_\_\_\_  
Elev. \_\_\_\_\_  
Vert. Datum: NGVD29  NAVD88   
Meas. Units: Metric  Imperial

Corner - Left as found  Found and tagged  Established  Reestablished  Rebuilt

Identification and type of corner found: Evidence used to identify or procedure used to establish or reestablish the corner:  
FOUND STREET MONUMENTS ON CORTE SAN FERNANDO  
AS SHOWN ON MAP OF REEDLAND WOODS, UNIT 2, FILED  
IN VOLUME 14 OF MAPS AT PAGE 22, MARIN COUNTY RECORDS.

A description of the physical condition of the monument as found and as set or reset: SEE PAGE 2 OF 2

SURVEYOR'S STATEMENT

This Corner Record was prepared by me or under my direction in conformance with

the Land Surveyor's Act on MAY 17, 2006

Signed [Signature] P.L.S or R.C.E. No. 6784

COUNTY SURVEYOR'S STATEMENT

This Corner Record was received MAY 30, 2006

and examined and filed JUNE 14, 2006

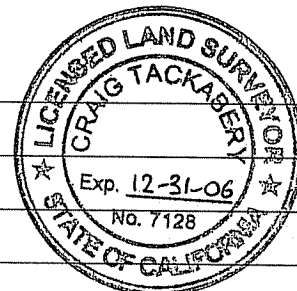
Signed [Signature] P.L.S or R.C.E. No. 7128

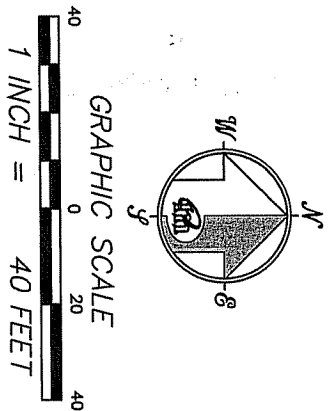
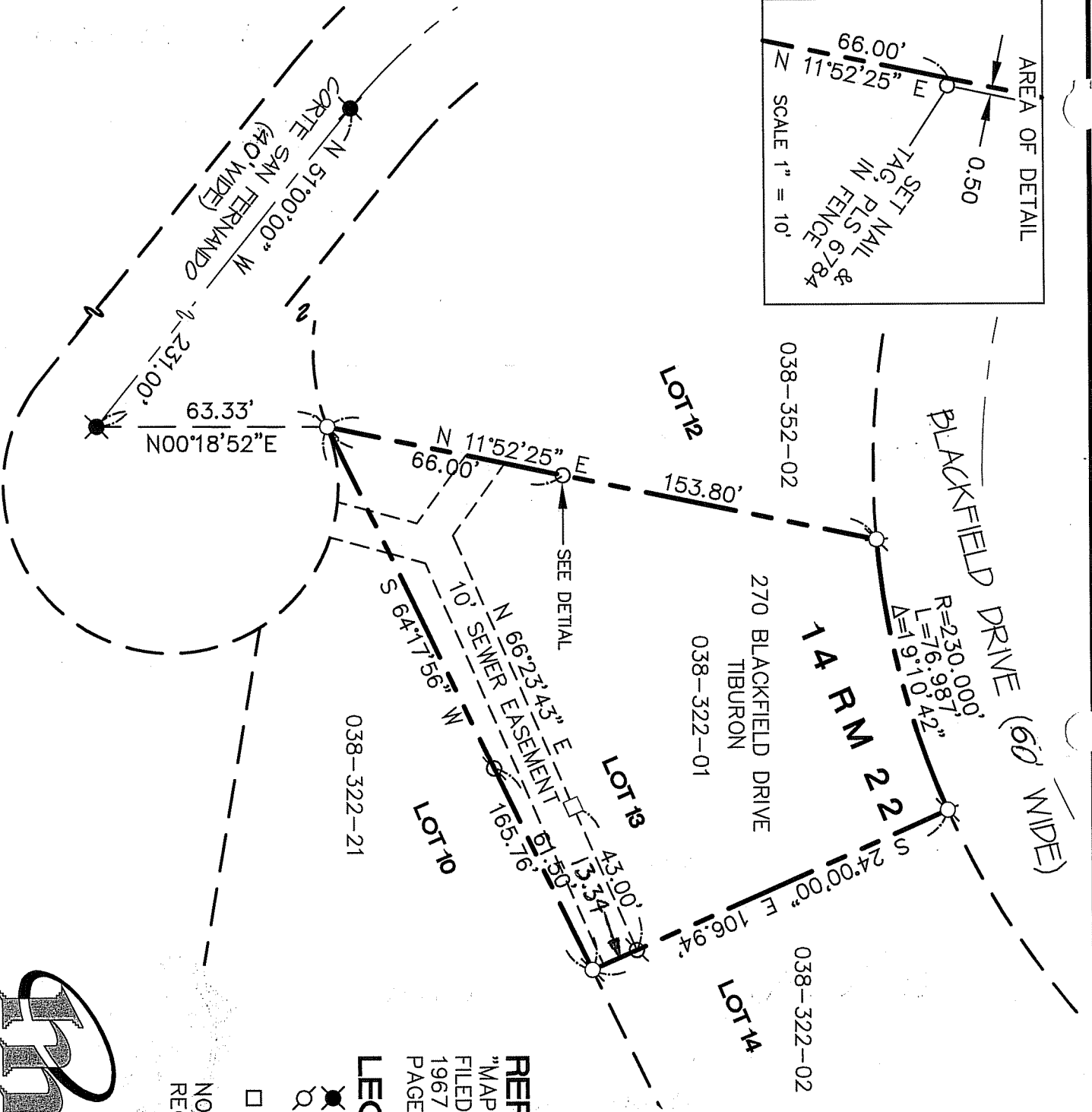
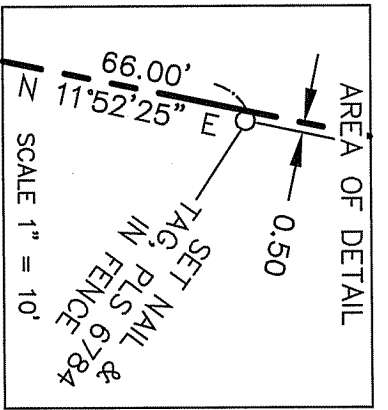
Title COUNTY SURVEYOR

County Surveyor's Comment \_\_\_\_\_



517106





**REFERENCE**

"MAP OF REEDLAND WOODS, UNIT 2"  
 FILED FOR RECORD DECEMBER 21,  
 1967 IN VOLUME 14 OF MAPS, AT  
 PAGE 22, MARIN COUNTY RECORDS.

**LEGEND**

- FOUND CITY MONUMENT
  - SET 5/8" REBAR WITH CAP, PLS 6784
  - SET 2x2 HUB & TACK WITH BRASS TAG, PLS 6784
- NOTE  
 RECORD=MEASURED

CORNER RECORD

**MERIDIAN SURVEYING**  
 ENGINEERING, INC.

1812 UNION STREET  
 SAN FRANCISCO, CA 94123  
 (415) 440-4131  
 info@meridiansurvey.com

06065  
 777 GRAND AVENUE, SUITE 202  
 SAN RAFAEL, CA 94901  
 (415) 456-6460