

CORNER RECORD

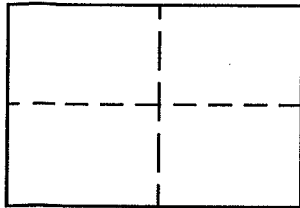
Document Number 85-004094 APN 38-321-01

City of Tiburon County of Marin, California

Brief Legal Description Lot 30 Map of Reedland Woods Unit 2 (14 Maps 22)

CORNER TYPE

COORDINATES (Optional)



Government Corner Control North
 Meander Property East
 Rancho Other Zone Datum
 Date of Survey July 19, 2005 Elev.

Corner Left as found Found and tagged Established Reestablished Rebuilt

Identification and type of corner found: Evidence used to identify or procedure used to establish or reestablish the corner:

Standard Street Monuments and Record Data Used to Reestablish Property Line Between Lots 29 and 30 as Shown on Reedland Woods Unit 2 (14 RM 22). See Attached Exhibit on Sheet #2.

A description of the physical condition of the monument as found and as set or reset:

Standard Street Monument Found in Good Condition.

SURVEYOR'S STATEMENT

This Corner Record was prepared by me or under my direction in conformance with the Land Surveyors' Act on July 20, 2005

Signed John G. Stuber L.S. or R.C.E. Number LS 3303

John G. Stuber License Expires June 30, 2006

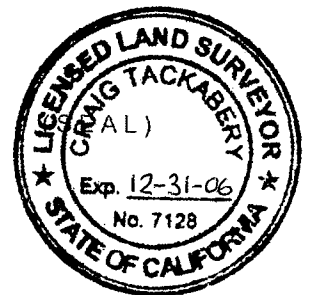


COUNTY SURVEYOR'S STATEMENT

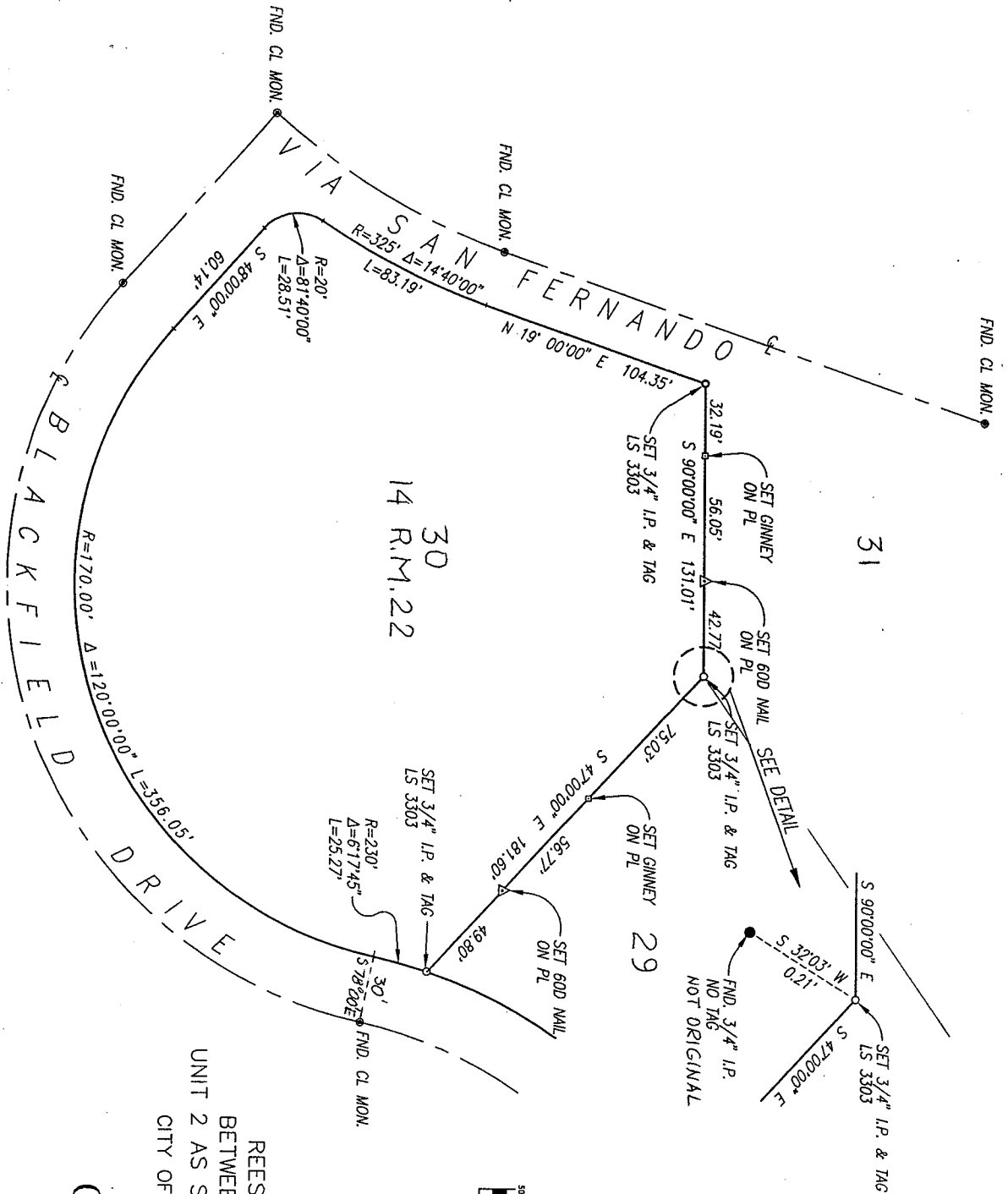
This Corner Record was received JULY 29, 2005

and examined and filed AUGUST 25, 2005

Signed Craig Tackabery Title COUNTY SURVEYOR



County Surveyor's Comment _____



REESTABLISHING LOT LINE
 BETWEEN LOTS 29 & 30 REEDLAND WOODS
 UNIT 2 AS SHOWN ON VOL. 7 PARCEL MAPS, PAGE 31
 CITY OF TIBURON
 CALIFORNIA

JULY 2005



Graphic Scale (in feet)

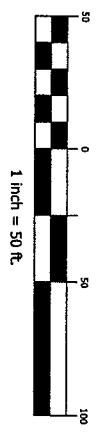


EXHIBIT 'A'
CORNER RECORD

CSW

CSW STUBER-STROEH
 ENGINEERING GROUP, INC.
 CONSULTING ENGINEERS
 790 DeLong Ave., Novato, CA 94945-3246
 (415) 892-4763 FAX (415) 892-4502
 SHEET 1 OF 1
 JOB # 1.788.01

