

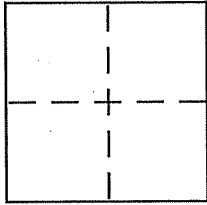
CORNER RECORD

Document Number 038-311-08

City of TIBURON

County of MARIN, California

Brief Legal Description LOT 32 OF 13 RM 23, MCR



CORNER TYPE

Government Corner Control
Meander Property
Rancho Other
Date of Survey OCT 30, 2009

COORDINATES (Optional)

N. _____
E. _____
Zone _____ NAD27 NAD83
NAD83 Epoch _____
Elev. _____
Vert. Datum: NGVD29 NAVD88
Meas. Units: Metric Imperial

Corner - Left as found Found and tagged Established Reestablished Rebuilt

Identification and type of corner found: Evidence used to identify or procedure used to establish or reestablish the corner:

SEE PAGE 2

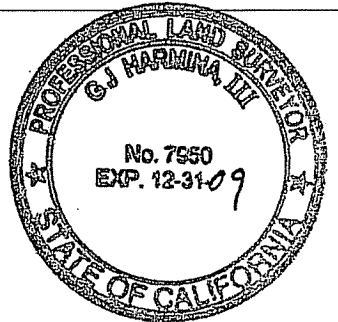
A description of the physical condition of the monument as found and as set or reset:

SEE PAGE 2

SURVEYOR'S STATEMENT

This Corner Record was prepared by me or under my direction in conformance with the Land Surveyor's Act on NOVEMBER 3, 2009

Signed [Signature] P.L.S or R.C.E. No. 7950



COUNTY SURVEYOR'S STATEMENT

This Corner Record was received NOVEMBER 9, 2009

and examined and filed NOVEMBER 18, 2009

Signed [Signature] P.L.S or R.C.E. No. 7128

Title COUNTY SURVEYOR



County Surveyor's Comment _____

NORTH
SCALE: 1" = 30'

Lot 33
APN 038-311-09

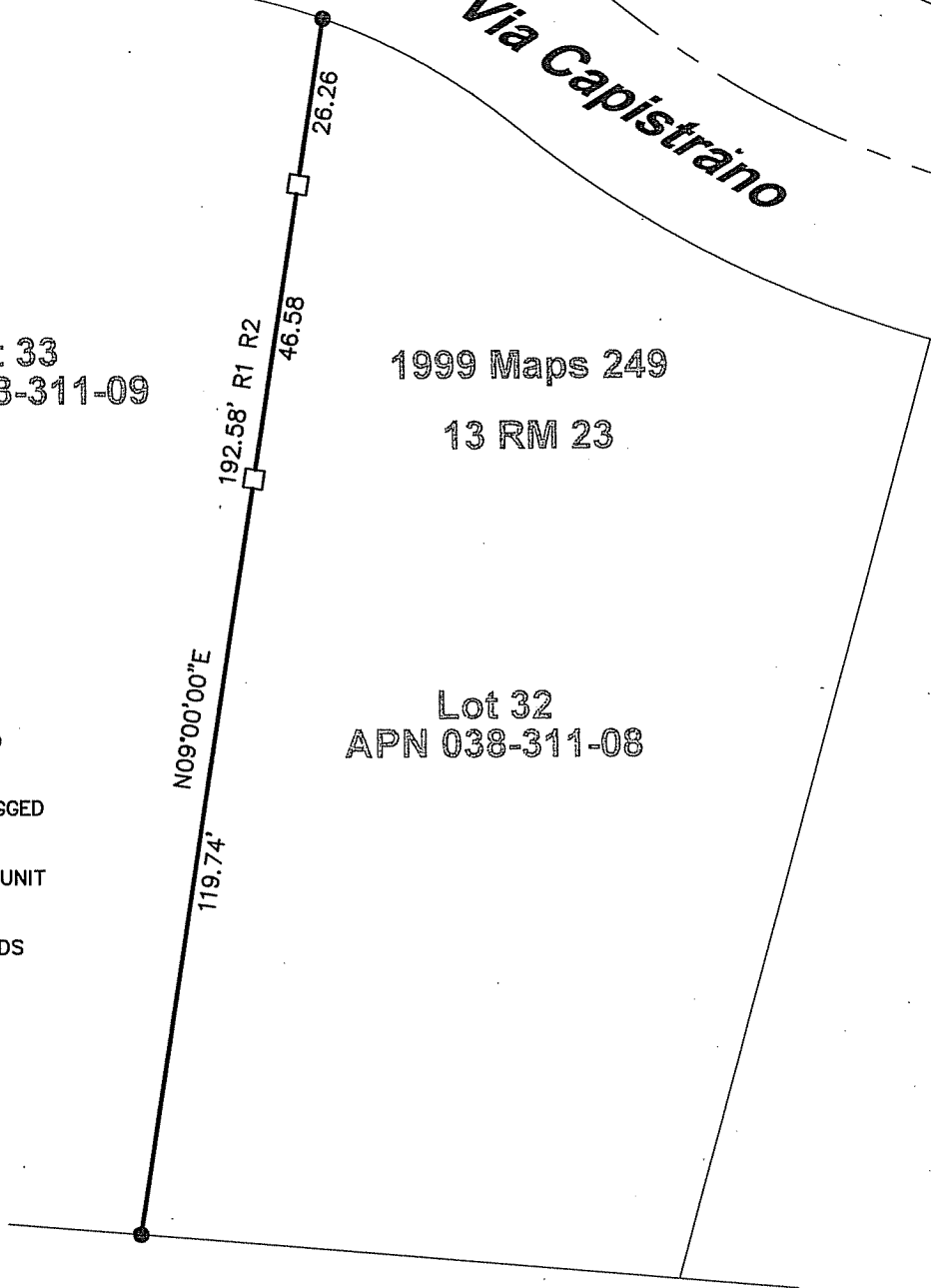
1999 Maps 249
13 RM 23

Lot 32
APN 038-311-08

Via Capistrano

LEGEND

- FOUND 5/8" REBAR, TAGGED
PLS 6784 PER R2
- SET HUB & BRASS TAG, TAGGED
PLS 7950
- R1 "MAP OF REEDLAND WOODS UNIT
ONE..." 13 MAPS 23, MCR
- R2 RECORD OF SURVEY OF LANDS
OF HUDNUT & TAM,
1999 MAPS 249, MCR
- MCR MARIN COUNTY RECORDS



STEVEN J. LAFRANCHI & ASSOCIATES, INC.
CIVIL ENGINEERS ~ LAND SURVEYORS ~ LAND PLANNERS

PETALUMA THEATRE SQUARE
140 SECOND STREET, SUITE 312
PETALUMA, CALIFORNIA 94952
707-762-3122 FAX 707-762-3239