

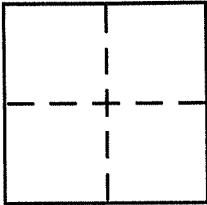
CORNER RECORD

Document Number APN 038-301-20

City of TIBURON

County of MARIN, California

Brief Legal Description LOT 20, 13 RM 23



CORNER TYPE

Government Corner Control
Meander Property
Rancho Other
Date of Survey 10/16/03

COORDINATES (Optional)

N. _____
E. _____
Zone _____ NAD27 NAD83
NAD83 Epoch _____
Elev. _____
Vert. Datum: NGVD29 NAVD88
Meas. Units: Metric Imperial

Corner - Left as found Found and tagged Established Reestablished Rebuilt

Identification and type of corner found: Evidence used to identify or procedure used to establish or reestablish the corner:

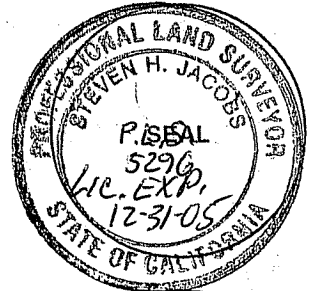
FOUND STD. ST. MON. W/ BRASS PIN AS SHOWN ON
13 RM 23 AND ON REVERSE.

A description of the physical condition of the monument as found and as set or reset: SET NAIL AND
TAG PLS 5296 IN ROOT AT ANGLE POINT OF
DRAINAGE EASEMENT, SET NAIL AND TAG IN TOP
FENCE/RAILING AS SHOWN ON REVERSE.

SURVEYOR'S STATEMENT

This Corner Record was prepared by me or under my direction in conformance with the Land Surveyor's Act on NOVEMBER, 2003

Signed [Signature] P.L.S or R.C.E. No. PLS 5296



COUNTY SURVEYOR'S STATEMENT

This Corner Record was received NOVEMBER 24, 2003

and examined and filed DECEMBER 9, 2003

Signed [Signature] P.L.S or R.C.E. No. 7128

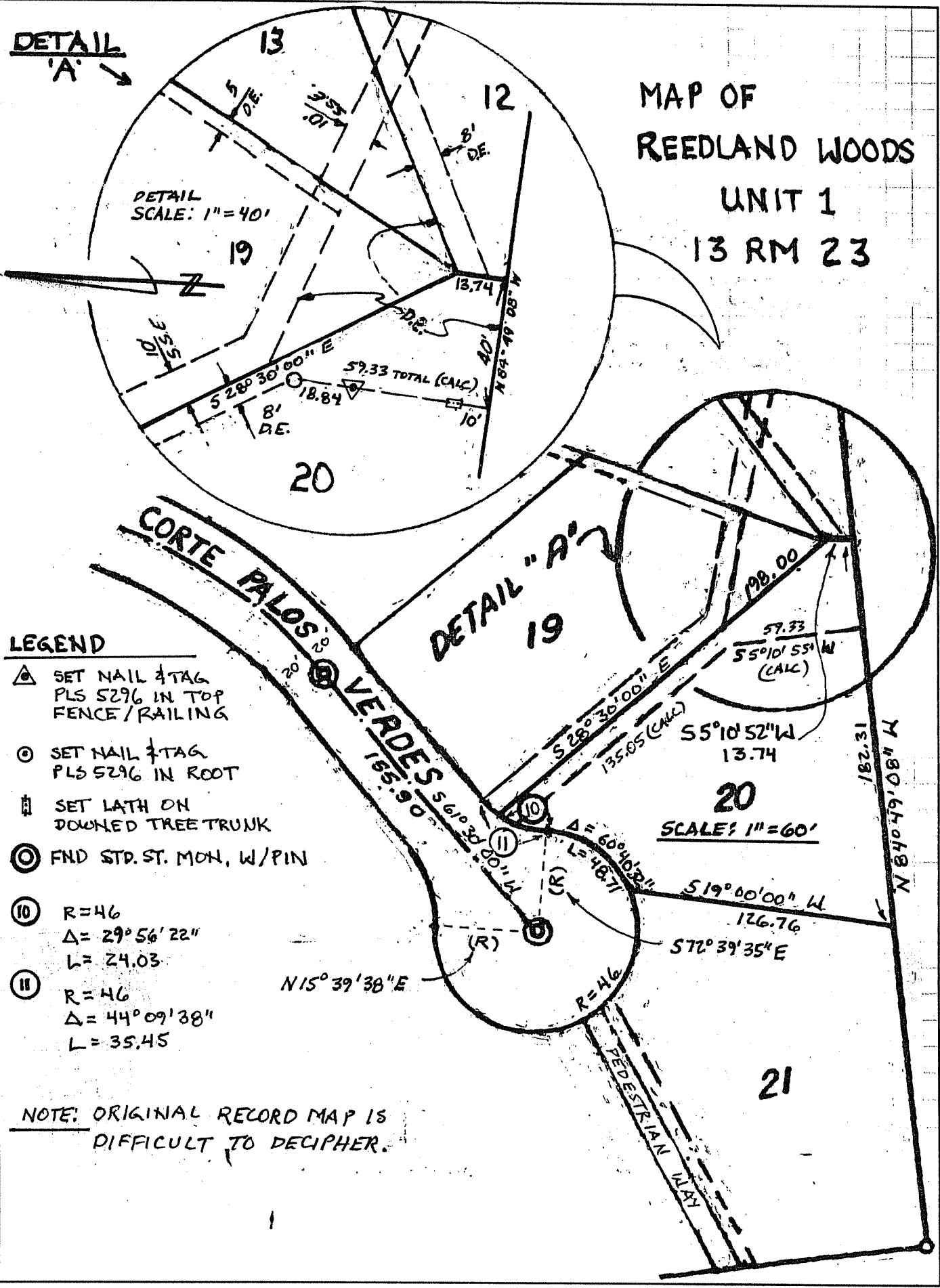
Title COUNTY SURVEYOR



County Surveyor's Comment _____

DETAIL 'A'

**MAP OF
REEDLAND WOODS
UNIT 1
13 RM 23**



LEGEND

- ▲ SET NAIL & TAG
PLS S296 IN TOP
FENCE / RAILING
- ⊙ SET NAIL & TAG
PLS S296 IN ROOT
- ⊞ SET LATH ON
DOWNED TREE TRUNK
- ⊙ FND STR. ST. MON, W/PIN
- ⊙ R=46
Δ= 29° 56' 22"
L= 24.03
- ⊙ R=46
Δ= 44° 09' 38"
L= 35.45

NOTE: ORIGINAL RECORD MAP IS
DIFFICULT TO DECIPHER.