

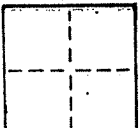
CORNER RECORD

1 of 2

COUNTY OF MARIN T. _____ R. _____ MERIDIAN _____ CALIFORNIA

CORNER TYPE: GOV'T. CORNER MEANDER RANCHO CONTROL OTHER

CORNER IDENTIFICATION — DATE OF VISIT _____ 19____



CORNER — LEFT AS FOUND FOUND AND TAGGED REESTABLISHED OBLITERATED CORNER REBUILT

PHYSICAL DESCRIPTION OF CORNER FOUND; EVIDENCE AND METHOD USED TO IDENTIFY OR REESTABLISH

STANDARD STREET MONUMENT

A.P. BOOK 38 P. 30

PHYSICAL DESCRIPTION OF MONUMENTS REBUILT OR PERPETUATED

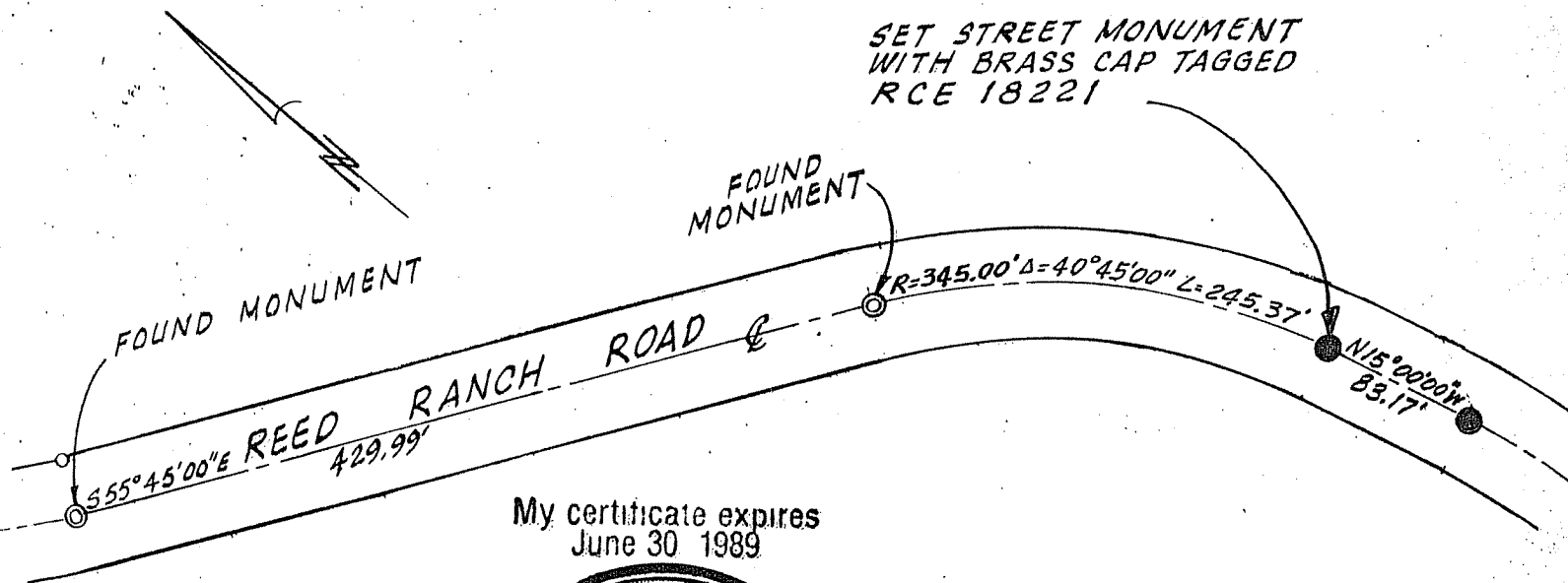
SET STANDARD STREET MONUMENTS (2) WITH BRASS CAP TAGGED
 RCE 18221 AS SHOWN BELOW PER MAP OF REEDLAND WOODS
 UNIT 1 FILED IN BOOK 13 OF RECORD MAPS AT PAGE 23,
 MARIN COUNTY RECORDS.

CALIFORNIA COORDINATE SYSTEM ORDER: FIRST SECOND THIRD

STATIONS USED: NGS (USC & GS) STATE COUNTY OTHER STATION _____ STATION _____

ZONE _____ ELEVATION _____ NORTHINGS (N) _____ EASTINGS (X) _____

SKETCH: (Include reference tie or witness points, remarks and topo of area)



SET STREET MONUMENT
 WITH BRASS CAP TAGGED
 RCE 18221

My certificate expires
 June 30 1989

REGISTERED PROFESSIONAL ENGINEER
 LOUIS SCHWARTZ
 CIVIL
 STATE OF CALIFORNIA

SCALE

SURVEYOR'S CERTIFICATE
 THIS CORNER RECORD WAS PREPARED BY ME OR UNDER MY CLOSE PERSONAL SUPERVISION AND IN ACCORDANCE WITH THE LAND SURVEYORS ACT
 ON AUGUST 25 1986 No. 18221

SIGNED: *[Signature]*
 or R.C.E. No. _____

REGISTERED PROFESSIONAL ENGINEER
 CHARLES F. MUELLER
 CIVIL
 STATE OF CALIFORNIA

COUNTY SURVEYOR'S CERTIFICATE
 THIS CORNER RECORD WAS RECEIVED 8-28 1986
 AND EXAMINED AND FILED 9-8 1986
 No. 18652 BY: *[Signature]*
 Exp. 6-30-89 TITLE: Deputy County Surveyor

STATEMENT ON BACK OF SHEET YES NO

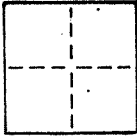
CORNER RECORD

2 of 2

COUNTY OF MARIN T. _____ R. _____ MERIDIAN _____ CALIFORNIA

CORNER TYPE: GOVT. CORNER MEANDER RANCHO CONTROL OTHER

CORNER IDENTIFICATION — DATE OF VISIT _____ 19____



CORNER — LEFT AS FOUND FOUND AND TAGGED REESTABLISHED OBLITERATED CORNER REBUILT

PHYSICAL DESCRIPTION OF CORNER FOUND; EVIDENCE AND METHOD USED TO IDENTIFY OR REESTABLISH

STANDARD STREET MONUMENT

AP BOOK 38 PG 30

PHYSICAL DESCRIPTION OF MONUMENTS, REBUILT OR PERPETUATED

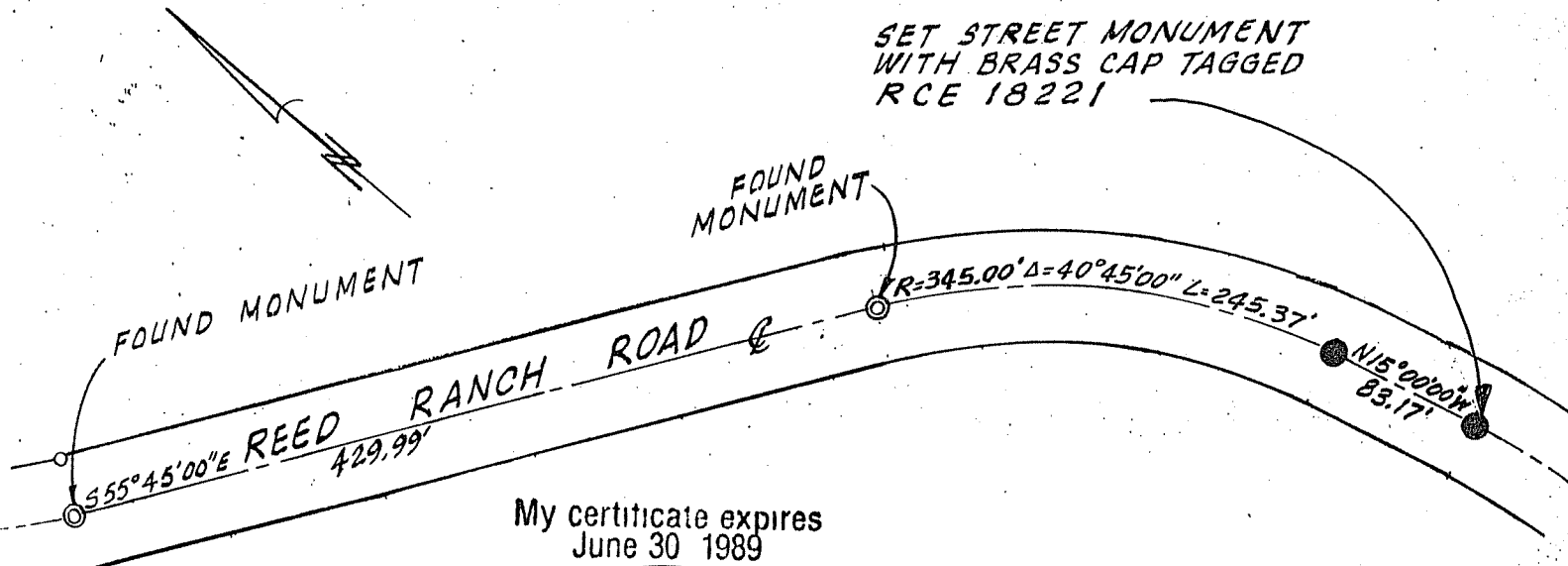
SET STANDARD STREET MONUMENTS (2) WITH BRASS CAP TAGGED RCE 18221 AS SHOWN BELOW PER MAP OF REEDLAND WOODS UNIT 1 FILED IN BOOK 13 OF RECORD MAPS AT PAGE 23, MARIN COUNTY RECORDS.

CALIFORNIA COORDINATE SYSTEM ORDER: FIRST SECOND THIRD

STATIONS USED: NGS (USC & GS) STATE COUNTY OTHER STATION _____ STATION _____

ZONE _____ ELEVATION _____ NORTHINGS (Y) _____ EASTINGS (X) _____

SKETCH: (Include reference tie or witness points, remarks and topo of area)



My certificate expires
June 30 1989

SCALE 1" = 100'

SURVEYOR'S CERTIFICATE
 REGISTERED PROFESSIONAL ENGINEER
 LOUIS SCHWIRZ
 THIS CORNER RECORD WAS PREPARED BY ME OR UNDER MY DIRECTION IN CONFORMANCE WITH THE LAND SURVEYING ACT ON AUGUST 23 No. 18221
 SIGNED: [Signature]
 or R.C.E. No. _____
 STATE OF CALIFORNIA

COUNTY SURVEYOR'S CERTIFICATE
 REGISTERED PROFESSIONAL ENGINEER
 CHARLES E. MILLER
 THIS CORNER RECORD WAS RECEIVED 8-28- 1986
 AND EXAMINED AND FILED 958 1986
 BY [Signature]
 No. 18652 TITLE Deputy County Surveyor
 Exp. 6-30-89 DOCUMENT No. _____
 CIVIL
 STATE OF CALIFORNIA

STATEMENT ON BACK OF SHEET
 YES NO