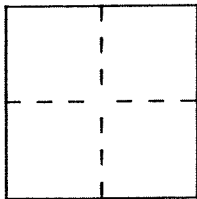


# CORNER RECORD

Document Number \_\_\_\_\_

City of TIBURON County of MARIN, California

Brief Legal Description AP# 38-291-38 ; PCL LOT 1 OF 24-PM-84



### CORNER TYPE

Government Corner  Control   
 Meander  Property   
 Rancho  Other   
 Date of Survey 05-11-93

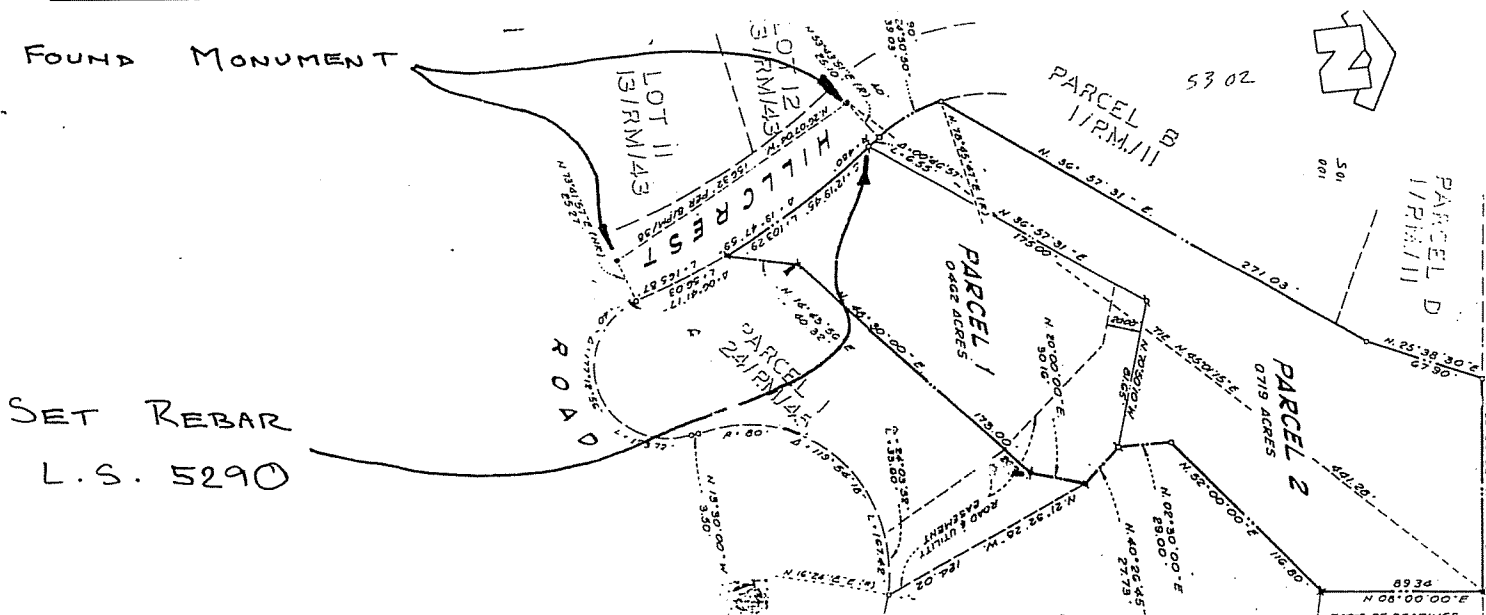
### COORDINATES (Optional)

N. \_\_\_\_\_  
 E. \_\_\_\_\_  
 Zone \_\_\_\_\_ Datum \_\_\_\_\_  
 Elev. \_\_\_\_\_

Corner — Left as found  Found and tagged  Established  Reestablished  Rebuilt

Identification and type of corner found: Evidence used to identify or procedure used to establish or reestablish the corner:  
FOUND 2 (Two) STANDARD CITY MONUMENTS

A description of the physical condition of the monument as found and as set or reset:  
1. SET 1/2" REBAR WITH PLASTIC CUP  
EMBOSSED L.S. 5290



### SURVEYOR'S STATEMENT

This Corner Record was prepared by me or under my direction in conformance with the Land Surveyors' Act on MAY 11 1993.

Signed David Harp L.S. or R.C.E. Number 5290



### COUNTY SURVEYOR'S STATEMENT

This Corner Record was received 5-14 1993 and examined and filed 5-17 1993

Signed RDD Title DCS



County Surveyor's Comment \_\_\_\_\_