

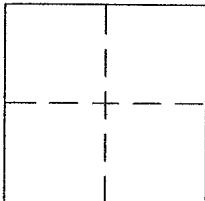
CORNER RECORD

Document Number APN 038-276-03

City of CORTE MADERA

County of MARIN, California

Brief Legal Description LOT 200 AS SHOWN ON THE MAP OF MARINER HIGHLANDS, FILED JUNE 20, 1962
IN BOOK 11 OF MAPS AT PAGE 22, SAN MATEO COUNTY RECORDS



CORNER TYPE

Government Corner Control
Meander Property
Rancho Other
Date of Survey 9/24/2015

COORDINATES (Optional)

N. _____
E. _____
Zone _____ NAD27 NAD83
NAD83 Epoch _____
Elev. _____
Vert. Datum: NGVD29 NAVD88
Meas. Units: Metric Imperial

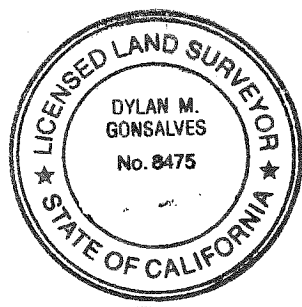
Corner - Left as found Found and tagged Established Reestablished Rebuilt

Identification and type of corner found: Evidence used to identify or procedure used to establish or reestablish the corner.
SEE PAGE 2

A description of the physical condition of the monument as found and as set or reset:
SEE PAGE 2

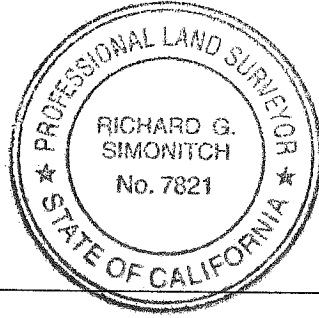
SURVEYOR'S STATEMENT

This Corner Record was prepared by me or under my direction in conformance with
the Land Surveyor's Act on September 24, 2015.
Signed [Signature] P.L.S. or R.C.E./No. 8475



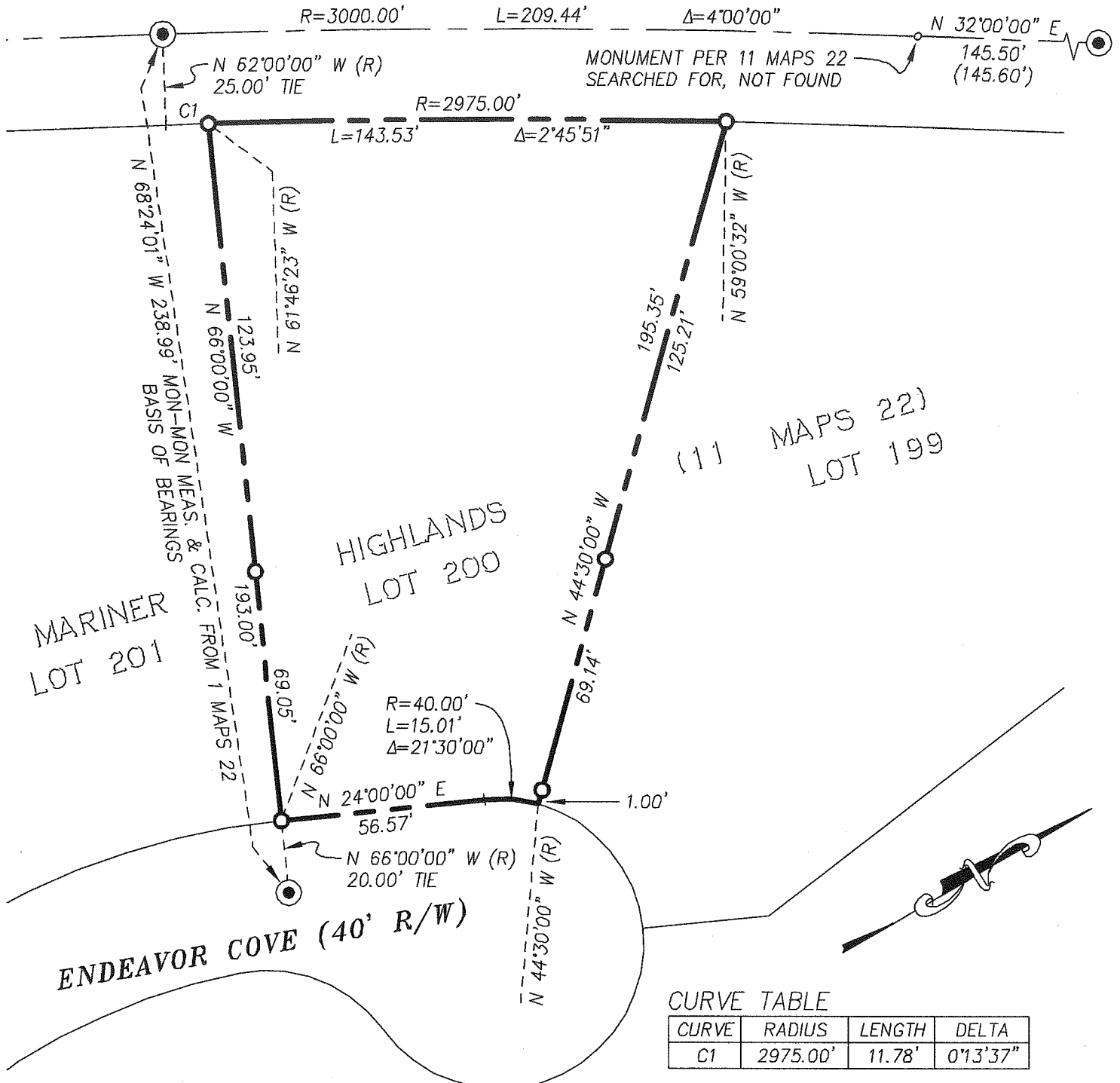
COUNTY SURVEYOR'S STATEMENT

This Corner Record was received SEPTEMBER 28, 2015
and examined and filed DECEMBER 01, 2015
Signed [Signature] P.L.S. or R.C.E.-No. PLS 7821
Title D County Surveyor



County Surveyor's Comment _____
A.P.N. 038-276-03

GRANADA DRIVE (50' R/W)



CURVE TABLE

CURVE	RADIUS	LENGTH	DELTA
C1	2975.00'	11.78'	0°13'37"

GENERAL NOTES

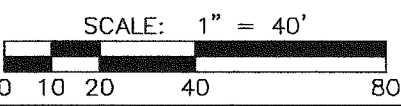
- DISTANCES ARE IN FEET AND DECIMALS THEREOF.
- ALL DISTANCES: (RECORD) = MEASURED, UNLESS OTHERWISE NOTED.
- THE LOCATIONS OF FOUND OR SET MONUMENTS MAY BE EXAGGERATED FOR CLARITY.

BASIS OF BEARINGS

THE BEARING NORTH 68°24'01" WEST BETWEEN FOUND MONUMENTS SHOWN HEREON, CALCULATED PER 11 MAPS 22.

LEGEND

- BOUNDARY
- CENTER LINE
- RADIAL / TIE LINE
- FND STREET MONUMENT PER 11 MAPS 22
- SET REBAR & PLASTIC CAP "PLS 8475"
- RECORD DATA PER 11 MAPS 22



DMG ENGINEERING, INC.

30 OAKVUE COURT, PLEASANT HILL, CALIF. 94523
 PHONE (925) 787-0463 • FAX (925) 287-8503

JOB: 15-114 DATE: 9/24/15