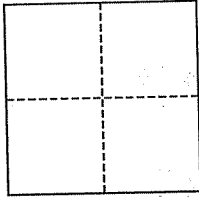


**CORNER RECORD**

City of Corte Madera

Document Number APN 38-275-11  
County of Marin, California

Brief Legal Description Lot 198 of 11 RM 22; AP No. 038-275-11



**CORNER TYPE**

Government Corner  Control   
Meander  Property   
Rancho  Other   
Date of Survey December 13, 2005

**COORDINATES (Optional)**

N. \_\_\_\_\_  
E. \_\_\_\_\_  
Zone \_\_\_\_\_ NAD27  NAD83   
NAD83 Epoch \_\_\_\_\_  
Elev. \_\_\_\_\_  
Vert. Datum: NGVD29  NAVD88   
Meas. Units: Metric  Imperial

Corner- Left as found  Found and tagged  Established  Reestablished  Rebuilt

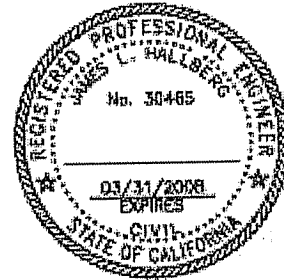
Identification and type of corner found: Evidence used to identify or procedure used to establish or reestablish the corner:  
All points set per 11 RM 22

A description of the physical condition of the monument as found and as set or reset: 3/4" Iron Pipes with plug, RCE 30465, as shown

**SURVEYOR'S STATEMENT**

This corner Record was prepared by me or under my direction in conformance with the Land Surveyor's Act on January 17, 2006

Signed [Signature] P.L.S. or R.C.E. No. 30465

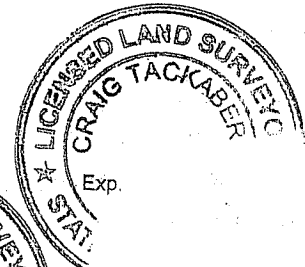


**COUNTY SURVEYOR'S STATEMENT**

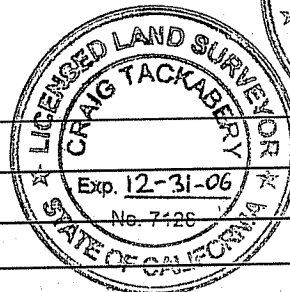
This Corner Record was received JANUARY 19, 2006  
and examined and filed FEBRUARY 21, 2006

Signed [Signature] P.L.S. or R.C.E. No. 7128

Title COUNTY SURVEYOR

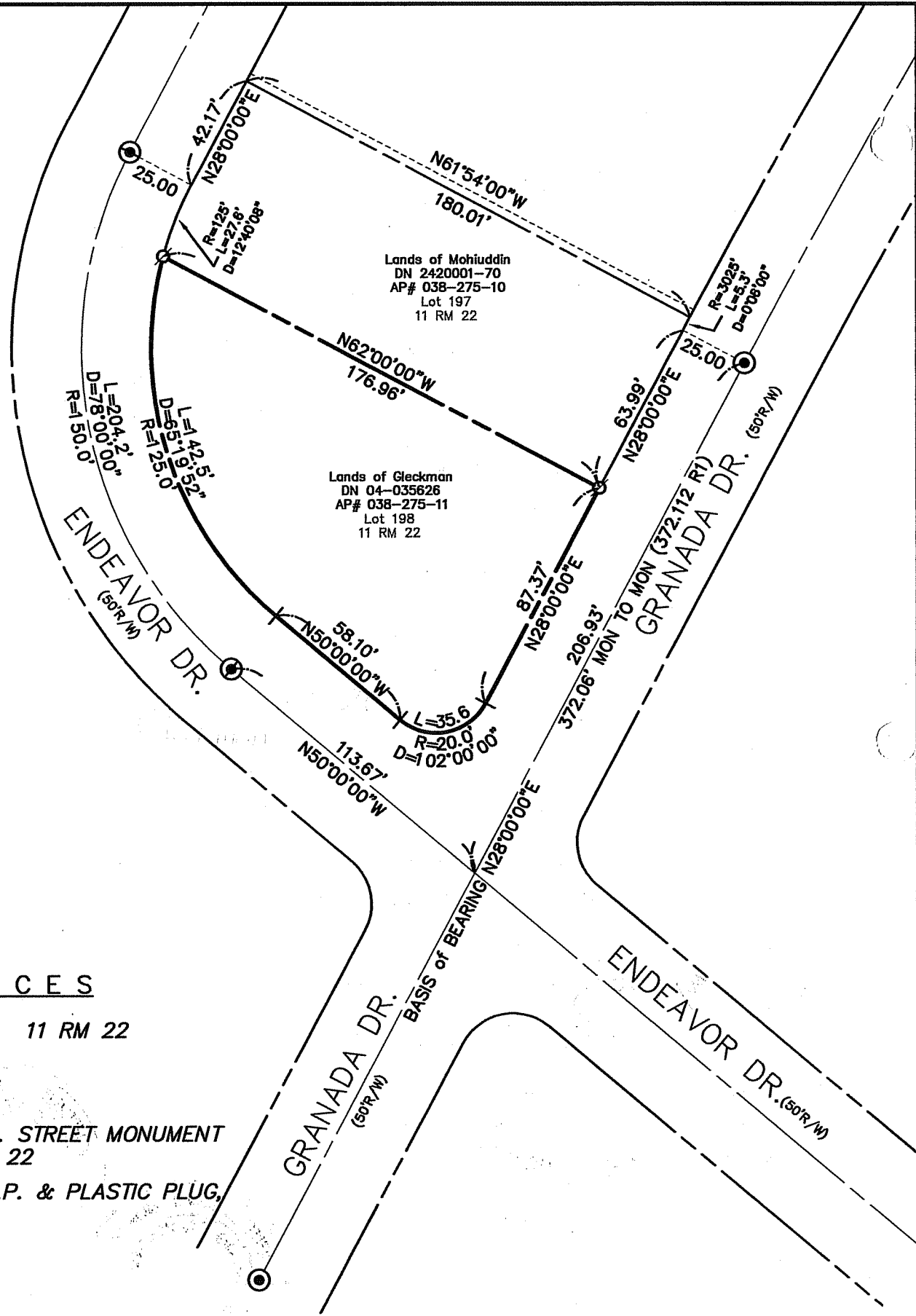


County Surveyor's Comment \_\_\_\_\_





SCALE: 1" = 50'



REFERENCES

R1 DENOTES 11 RM 22

LEGEND

- ⊙ FOUND STD. STREET MONUMENT PER 11 RM 22
- SET 3/4" I.P. & PLASTIC PLUG, RCE 30465

Note: All distances are in feet and decimals thereof.

SHEET	1	OF	1
SCALE:	1" = 50'	DESIGN:	jlh
DATE:	12-13-05	DRAWN:	XXX
FILE:	2005-208	CHECKED:	J.L.H

**J.L. ENGINEERING**  
 CIVIL ENGINEERS—LAND SURVEYORS  
 1539 4th ST., SAN RAFAEL, CA. 94901 (415) 457-6647

**Corner Record**  
 Lands of Gleckman — 200 Granada Dr.  
 APN 038-275-11, Corte Madera, Marin County, CA