

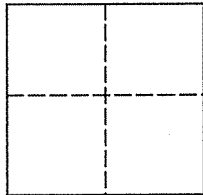
**Lands of Graham**  
Job #: 01-563

**CORNER RECORD**

Document Number 038-275-03

City of Corte Madera County of Marin California

Brief Legal Description Lot 190, 11 RM 22, Map of Mariner Highlands



**CORNER TYPE**

**COORDINATES (Optional)**

Government Corner  Control

Meander  Property

Rancho  Other

Date of Survey August 2001

N \_\_\_\_\_  
E \_\_\_\_\_

Zone \_\_\_\_\_ NAD27  NAD83   
NAD 83 Epoch

Elev. \_\_\_\_\_

Vert. Datum: NGVD29  NAVD88

Meas. Units: Metric  Imperial

**Corner -** Left as found  Found and tagged  Established  Reestablished  Rebuilt

Identification and type of corner found: Evidence used to identify or procedure used to establish or reestablish the corner:  
See page 2 of 2

A description of the physical condition of the monument as found and as set or reset:  
See page 2 of 2

**SURVEYOR'S STATEMENT**

This Corner Record was prepared by me or under my direction in conformance with

The Land Surveyor's Act in August 2001.

Signed [Signature] P.L.S. 6649



**COUNTY SURVEYOR'S STATEMENT**

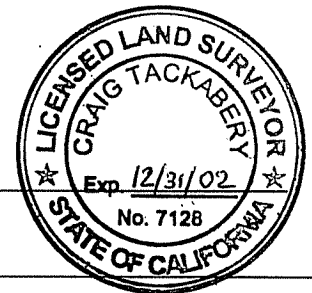
This Corner Record was received NOVEMBER 13, 2001

and examined and filed NOVEMBER 19, 2001

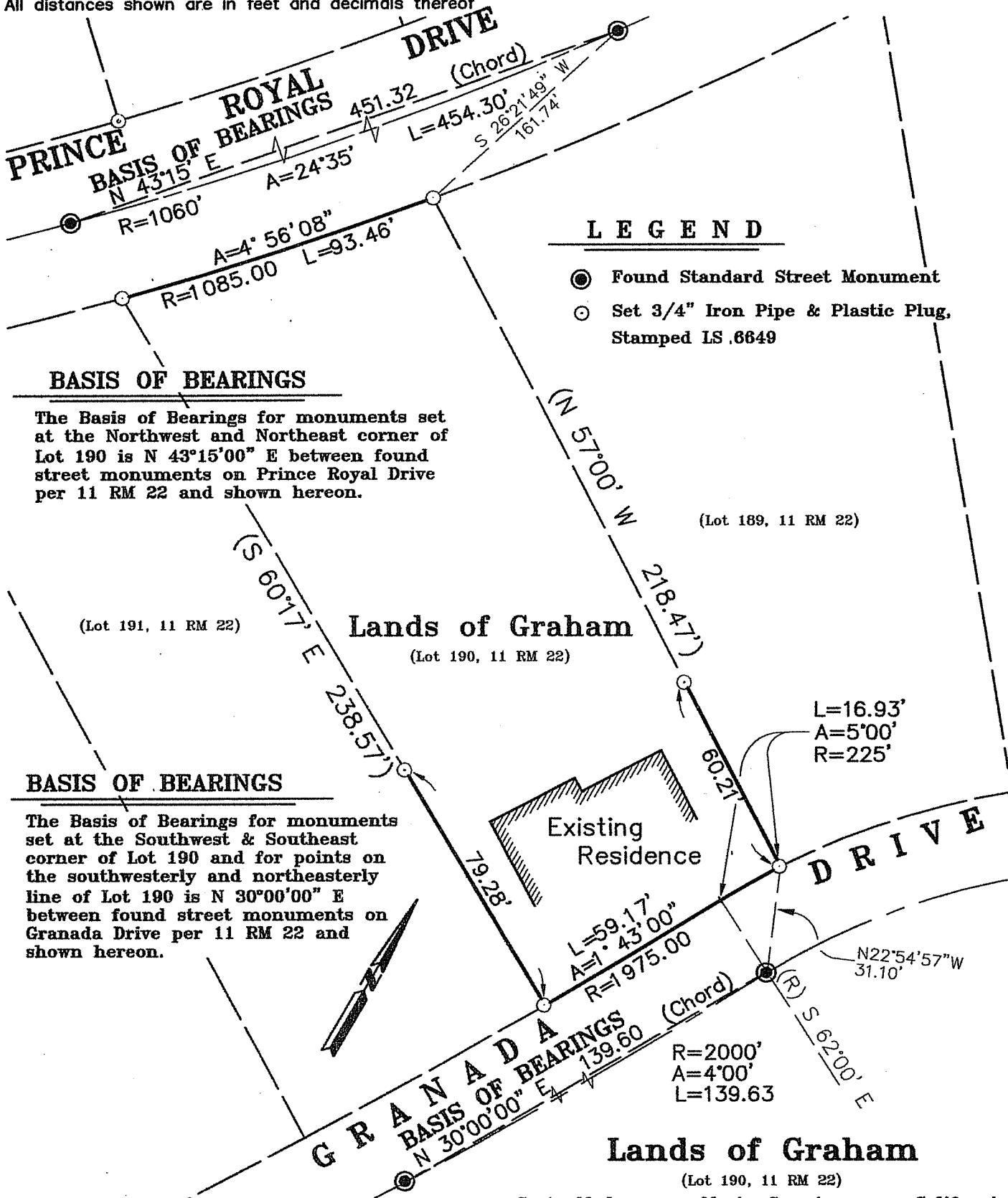
Signed [Signature] P.L.S. or R.C.E. No. 7128

Title DEPUTY

County Surveyors' Comment \_\_\_\_\_



All distances shown are in feet and decimals thereof



**LEGEND**

- Found Standard Street Monument
- Set 3/4" Iron Pipe & Plastic Plug, Stamped LS .6649

**BASIS OF BEARINGS**

The Basis of Bearings for monuments set at the Northwest and Northeast corner of Lot 190 is  $N 43^{\circ}15'00'' E$  between found street monuments on Prince Royal Drive per 11 RM 22 and shown hereon.

**BASIS OF BEARINGS**

The Basis of Bearings for monuments set at the Southwest & Southeast corner of Lot 190 and for points on the southwesterly and northeasterly line of Lot 190 is  $N 30^{\circ}00'00'' E$  between found street monuments on Granada Drive per 11 RM 22 and shown hereon.

*Lawrence A. Stevens*  
 Lawrence A. Stevens, PLS 6649  
 my license expires 12/31/03

Corte Madera Marin County California  
 Scale: 1" = 40' August 2001

**L.A. Stevens & Associates, Inc.**  
 Professional Land Surveyors \* (415) 382-8321  
 1132 Bel Marin Keys Blvd. \* Novato, CA 94949

Job # 01-563