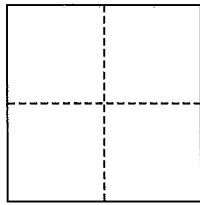


CORNER RECORD

City of Corte Madera

Document Number AP# 038-273-08
County of Marin, California

Brief Legal Description Lot 49, 11 RM 22



CORNER TYPE

Government Corner Control
Meander Property
Rancho Other
Date of Survey November 21, 2014

COORDINATES (Optional)

N. _____
E. _____
Zone _____ NAD27 NAD83
NAD83 Epoch _____
Elev. _____
Vert. Datum: NGVD29 NAVD88
Meas. Units: Metric Imperial

Corner- Left as found Found and tagged Established Reestablished Rebuilt

Identification and type of corner found: Evidence used to identify or procedure used to establish or reestablish the corner:
Found original Standard Street Mons, per 11 RM 22.

A description of the physical condition of the monument as found and as set or reset: All Property Corners and Property Line points were set as shown hereon, per 11 RM 22.

SURVEYOR'S STATEMENT

This corner Record was prepared by me or under my direction in conformance with the Land Surveyor's Act on November 26, 2014

Signed [Signature] P.L.S. or R.C.E. No. 30465

COUNTY SURVEYOR'S STATEMENT

This Corner Record was received DECEMBER 1, 2014

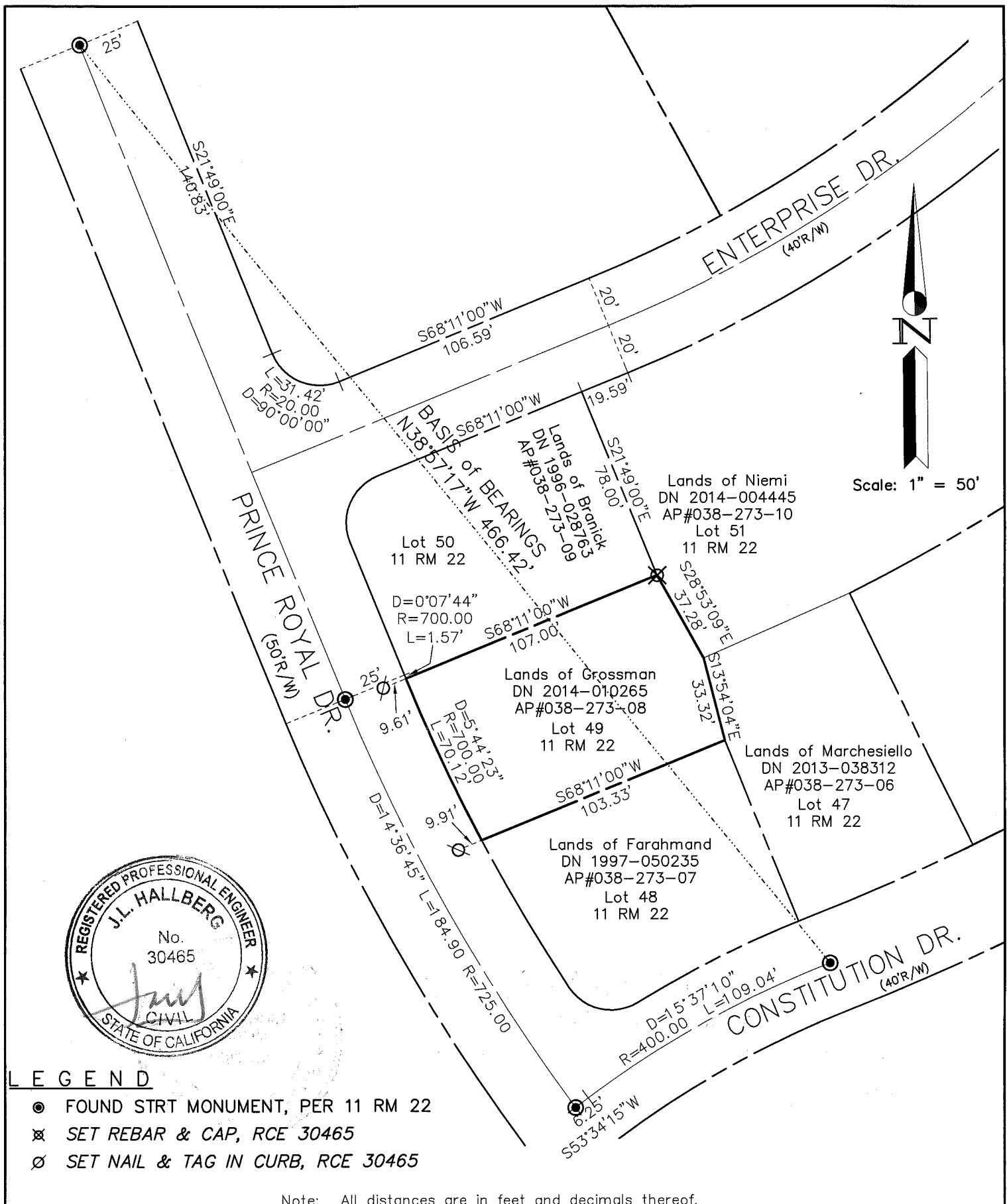
and examined and filed DECEMBER 23, 2014

Signed [Signature] P.L.S. or R.C.E. No. 7821

Title DEPUTY



County Surveyor's Comment _____



Scale: 1" = 50'



LEGEND

- FOUND STRT MONUMENT, PER 11 RM 22
- ⊗ SET REBAR & CAP, RCE 30465
- ⊘ SET NAIL & TAG IN CURB, RCE 30465

Note: All distances are in feet and decimals thereof.

| | | | |
|--------|----------|----------|-------|
| SHEET | 1 | OF | 1 |
| SCALE: | 1" = 50' | DESIGN: | EDL |
| DATE: | Nov 2014 | DRAWN: | EDL |
| FILE: | 2014-116 | CHECKED: | J.L.H |

J.L. ENGINEERING
 CIVIL ENGINEERS-LAND SURVEYORS
 1539 4th ST., SAN RAFAEL, CA. 94901 (415) 457-6647

Corner Record
 Lands of Grossman - 151 Prince Royal Dr.
 APN 038-273-08, Corte Madera, Marin County, CA