

CORNER RECORD

Assessor's Parcel No. 38-272-01

City of Corte Madera County of Marin California
Brief Legal Description: Lot 4, 11 RM 22 Marin County Records

CORNER TYPE

COORDINATES
(Optional)

Lot in Existing Subdivision

None

Corners - None found. Calculated the lot corners and set monuments as shown on Page 2.
Calculations were based on the street monuments in Prince Royal Drive as shown on the map.

Description of Monuments reset: Monuments set or referenced are shown on Page 2.

SURVEYOR'S STATEMENT

This Corner Record was prepared by me or under my direction in conformance with the Land Surveyor's Act on January 9, 2015.

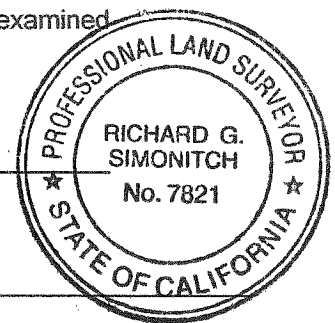


Signed Dale White LS 4397

COUNTY SURVEYOR'S STATEMENT

This Corner Record was received Jan 15, 20 15, and examined
and filed MARCH 16, 20 2015.

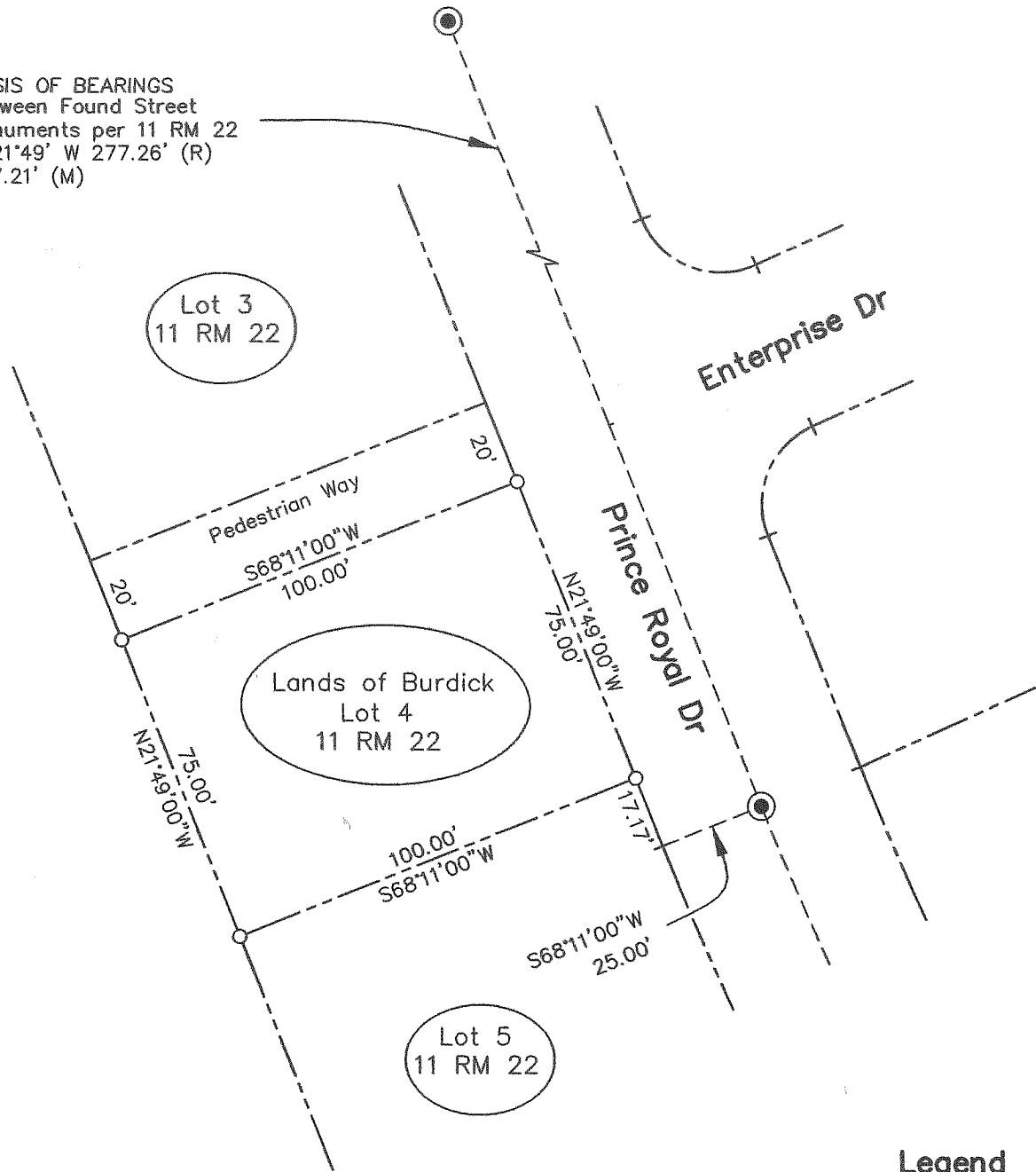
Signed Richard G. Simonitch Title Deputy



County Surveyor's Comments _____

Corner Record

BASIS OF BEARINGS
 Between Found Street
 Monuments per 11 RM 22
 N 21°49' W 277.26' (R)
 277.21' (M)



Abbreviations

- IP Iron Pipe
- M Measured
- R Record Dimension

Legend

- Property Line
- Set 3/4" IP and Tag LS 4397
- Found Street Monument Per 11 RM 22

148 Prince Royal Dr.
 Corte Madera, CA
 APN 38-272-01

Corner Record

Property Survey
 Lot 4, 11 RM 22
 Marin County Records

D:\LDT2014\Burdick-Prince Royal\CR.dwg