

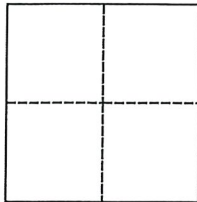
CORNER RECORD

Agency Index DPW 21-093

Document Number APN 038-271-01

TOWN OF CORTE MADERA County of MARIN, California

Brief Legal Description LOT 2, MAP OF MARINER HIGHLANDS, 11 RM 22



CORNER TYPE

Government Corner Control
Meander Property
Rancho Other

Date of Survey JUNE 30, 2021

COORDINATES (Optional)

N. _____ E. _____

Elevation _____

Units Metric U.S. Survey Foot

Horizontal Datum _____

Zone _____ Epoch Date _____

Vertical Datum _____

Complies with Public Resources Code §§8801-8819

Complies with Public Resources Code §§8890-8902

PLS Act Ref.: 8765(d) 8771 8773 Other:

Corner/Monument: Left as found Established Rebuilt Pre-Construction

Found and tagged Reestablished Referenced Post-Construction

Narrative of corner identified and monument as found, set, reset, replaced, or removed:

See sheet #2 for description(s):

FOUND RECORD STREET MONUMENTS AND RECORD PROPERTY CORNER MONUMENTS, AS SHOWN ON SHEET 2.

FOUND MONUMENTS WERE CONSISTENT WITH RECORD BOUNDARY LOCATIONS. SET MISSING CORNER MONUMENTS

FOR LOT 2 USING RECORD DATA AS SHOWN ON SHEET 2.

SURVEYOR'S STATEMENT

This Corner Record was prepared by me or under my direction in conformance with

the Professional Land Surveyors' Act on JUNE 30, 2021

Signed *Ray C. Carlson* P.L.S. ██████████ No. 3890



COUNTY SURVEYOR'S STATEMENT

This Corner Record was received October 20, 2021

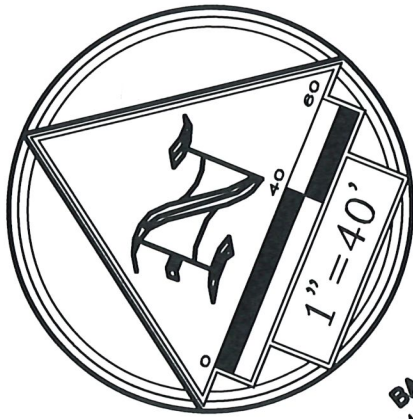
and examined and filed November 12, 2021

Signed *T.W. Park* P.L.S. ██████████ No. 8176

Title County Surveyor

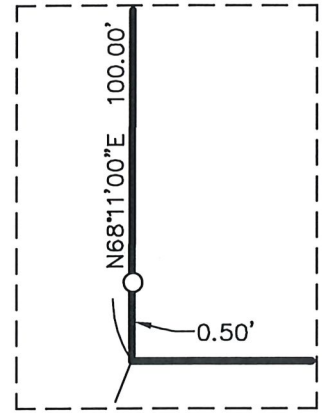
County Surveyor's Comment





BASIS OF BEARINGS
 S61°47'23"E 235.96' CR1&M

ENTERPRISE DRIVE
 N68°11'00"E 151.59' R1&M



DETAIL - NOT TO SCALE

MARINER HIGHLANDS

11 RM 22

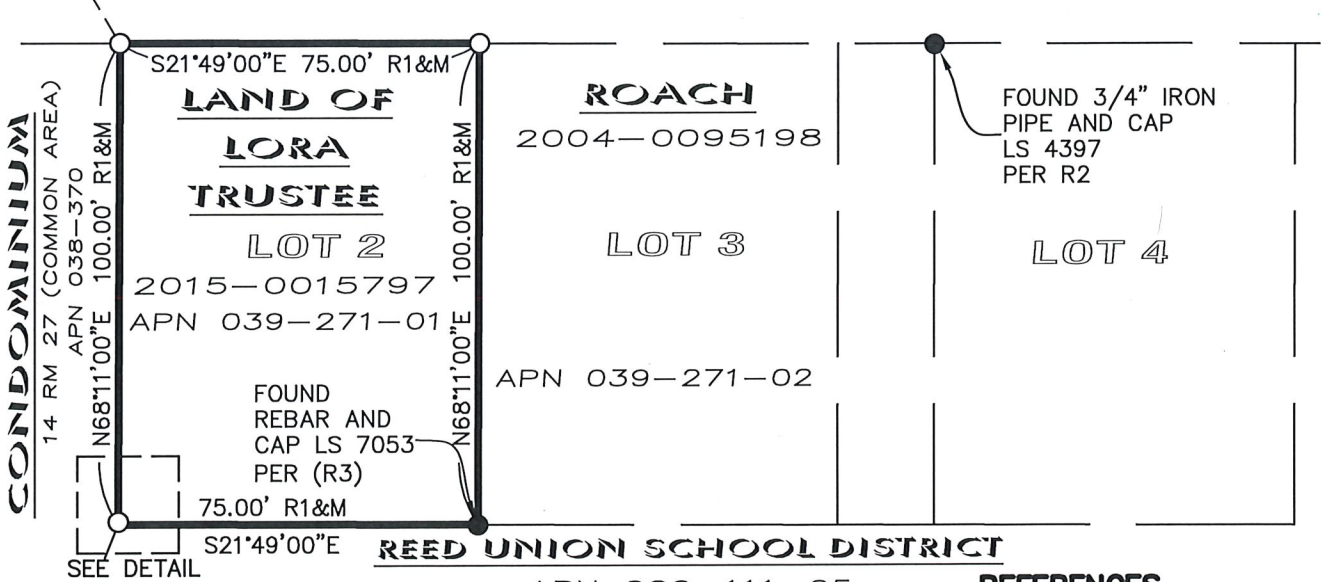
(25')

S21°49'00"E 180.83' R1&M

PRINCE ROYAL DRIVE

(25')

S37°04'05"W
 29.20' CR1&M



MARINER TOWN HOUSES CONDOMINIUM
 14 RM 27 (COMMON AREA)
 APN 038-370
 N68°11'00"E 100.00' R1&M

LEGEND

- FOUND MONUMENT AS NOTED
- ⊙ FOUND STREET MONUMENT PER R1
- SET 1/2" IRON PIPE, TAGGED LS 3890
- R1&M RECORD AND MEASURED DATA ARE IDENTICAL
- CR# CALCULATED FROM RECORD
- M.C.R. MARIN COUNTY RECORDS

REFERENCES

- R1 MAP OF MARINER HIGHLANDS 11 RM 022, M.C.R.
- R2 CORNER RECORD # 038-272-01, M.C.R.
- R3 CORNER RECORD # 038-271-02, M.C.R.

- TIE LINE
- ADJOINER LINE
- BOUNDARY LINE



RAY CARLSON
 AND ASSOCIATES, INC.
 Mapping for a Better World™

SURVEYING • MAPPING • GIS • CONSULTING
 411 RUSSELL AVENUE SANTA ROSA, CALIFORNIA 95403
 (707) 528-7649 • RCMAPS.COM

© 2021, Ray Carlson and Associates, Inc.