

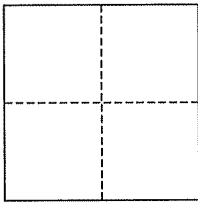
**CORNER RECORD**

Document Number AP# 038-266-13

City of Corte Madera

County of Marin, California

Brief Legal Description Lot 186, 11 RM 22



**CORNER TYPE**

Government Corner  Control   
Meander  Property   
Rancho  Other   
Date of Survey December 4, 2007

**COORDINATES (Optional)**

N. \_\_\_\_\_  
E. \_\_\_\_\_  
Zone \_\_\_\_\_ NAD27  NAD83   
NAD83 Epoch \_\_\_\_\_  
Elev. \_\_\_\_\_  
Vert. Datum: NGVD29  NAVD88   
Meas. Units: Metric  Imperial

**Corner-** Left as found  Found and tagged  Established  Reestablished  Rebuilt

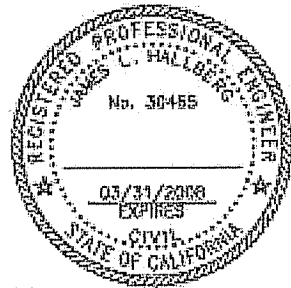
Identification and type of corner found: Evidence used to identify or procedure used to establish or reestablish the corner:  
Found Standard Street Monuments on Granada Dr. and Prince Royal Dr. as shown, per 11 RM 22

A description of the physical condition of the monument as found and as set or reset: Set Iron Pipe & Plugs (RCE 30465) as shown, per 11 RM 22

**SURVEYOR'S STATEMENT**

This corner Record was prepared by me or under my direction in conformance with the Land Surveyor's Act on December 4, 2007

Signed [Signature] P.L.S. or R.C.E. No. 30465



**COUNTY SURVEYOR'S STATEMENT**

This Corner Record was received DECEMBER 6, 2007 and examined and filed JANUARY 9, 2008

Signed [Signature] P.L.S. or R.C.E. No. 7128

Title COUNTY SURVEYOR



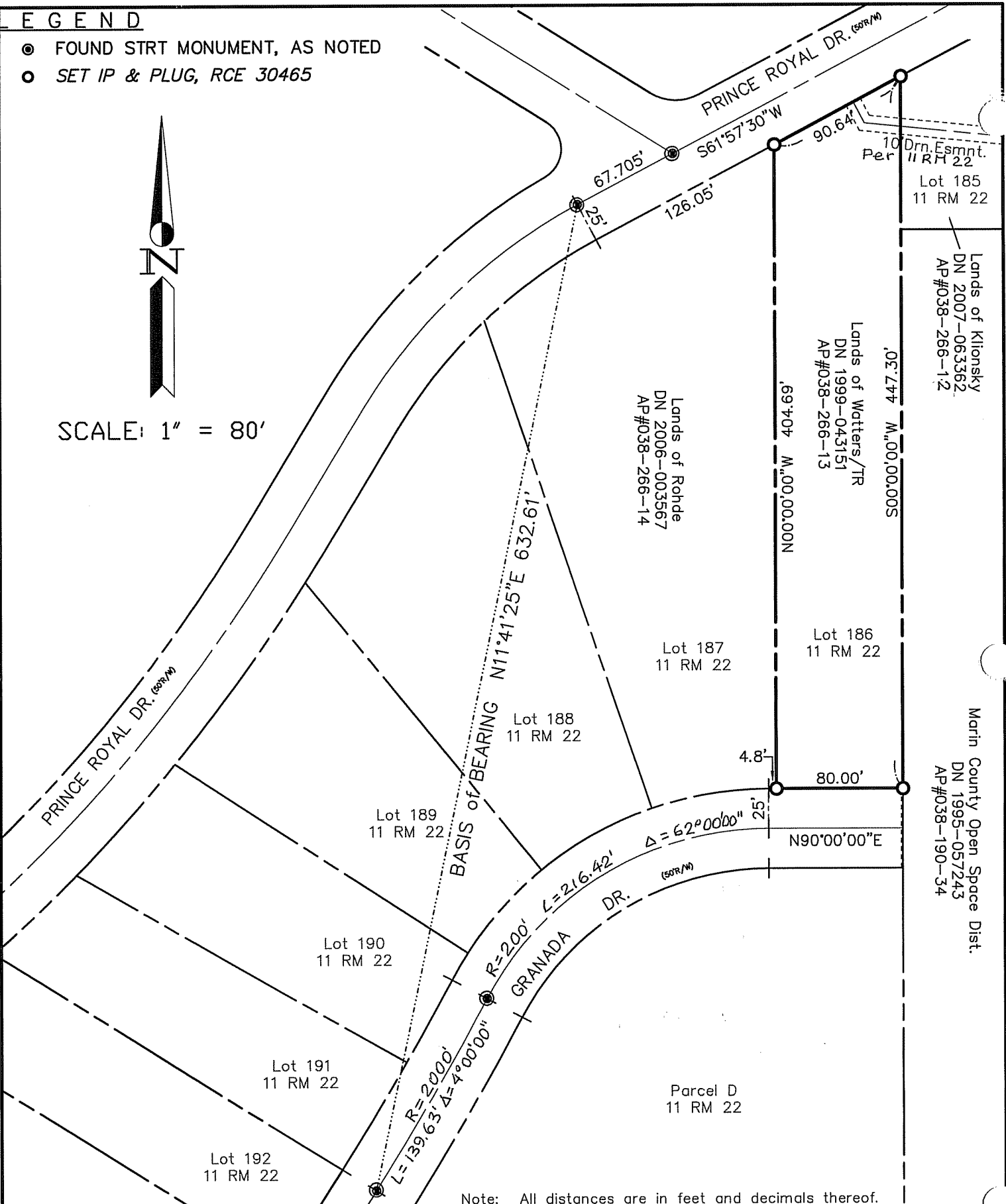
**County Surveyor's Comment** \_\_\_\_\_

**E G E N D**

- FOUND STRT MONUMENT, AS NOTED
- SET IP & PLUG, RCE 30465



SCALE: 1" = 80'



Note: All distances are in feet and decimals thereof.

SHEET	1	OF	1
SCALE:	1" = 80'	DESIGN:	PR
DATE:	Dec. 2007	DRAWN:	PR
FILE:	2007-175	CHECKED:	J.L.H

**J.L. ENGINEERING**  
 CIVIL ENGINEERS-LAND SURVEYORS  
 1539 4th ST., SAN RAFAEL, CA. 94901 (415) 457-6647

**Corner Record**  
 Lands of Watters/TR - 248 Granada Dr., C.M.  
 APN 038-266-13, Corte Madera, Marin County, CA