

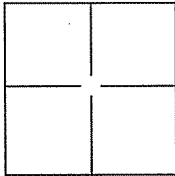
# CORNER RECORD

Document Number A.P.N. 038-253-05

City of Corte Madera

County of Marin, California

Brief Legal Description Lot 151, Map of Mariner Highlands, 118 Westward Drive, 11 RM 22.



### CORNER TYPE

Government Corner  Control   
Meander  Property   
Rancho  Other

Date of Survey 6 September 2011

### COORDINATES(Optional)

N. \_\_\_\_\_  
E. \_\_\_\_\_  
Zone \_\_\_\_\_ NAD27  NAD83   
NAD83 Epoch \_\_\_\_\_  
Elev. \_\_\_\_\_  
Vert. Datum: NGVD29  NADV88   
Meas. Units: Metric  Imperial

Corner - Left as found  Found and tagged  Established  Reestablished  Rebuilt

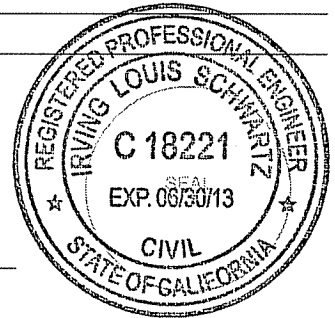
Identification and type of corner found: Evidence used to identify or procedure used to establish or reestablish the corner:  
Found Standard Street Monuments (3) per 11 RM 22.

A description of the physical condition of the monument as found and as set or reset: \_\_\_\_\_  
Set NW and SW corners (2 corners) on Lot 151, 11 RM 22, See Exhibit "A".

### SURVEYOR'S STATEMENT

This Corner Record was prepared by me or under my direction in conformance with the Land Surveyor's Act on SEPT. 19, 2011.

Signed [Signature] P.L.S. or R.C.E. No.: 18221



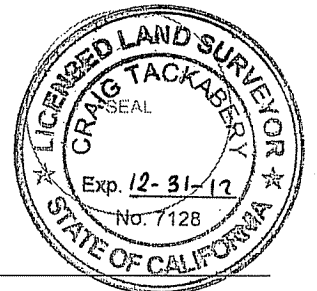
### COUNTY SURVEYOR'S STATEMENT

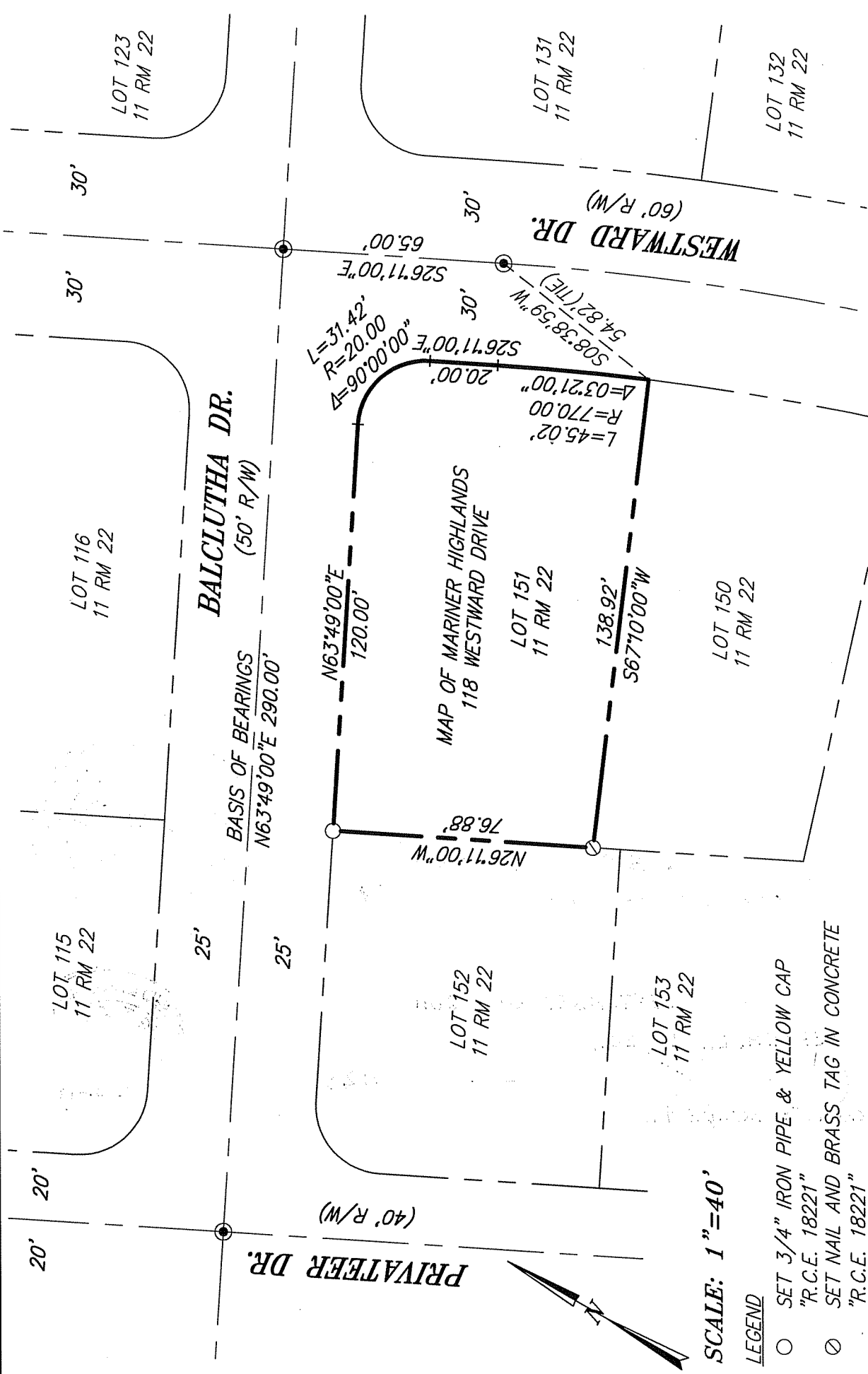
This Corner Record was received SEPTEMBER 20, 2011 and examined and filed SEPTEMBER 28, 2011.

Signed [Signature] P.L.S. or R.C.E. No.: 7128

Title COUNTY SURVEYOR

County Surveyor's Comment \_\_\_\_\_





**EXHIBIT A**

**ILS ASSOCIATES, INC.®**  
 CIVIL ENGINEERING AND LAND SURVEYING  
 79 GALLI DRIVE, SUITE A NOVATO, CA 94949-5717 (415)883-9200 FAX (415)883-2763

A.P.N. 038-253-05

SCALE: 1"=40'

**LEGEND**

- SET 3/4" IRON PIPE & YELLOW CAP  
"R.C.E. 18221"
- ◊ SET NAIL AND BRASS TAG IN CONCRETE  
"R.C.E. 18221"
- FOUND STANDARD STREET MONUMENT  
PER 11 RM 22

**NOTE:**

ALL DIMENSIONS AND BEARINGS  
 SHOWN HEREON ARE PER 11 RM 22.

DATE: 9/15/2011  
 FILE: 8598CR.dwg  
 PAGE 2 OF 2