

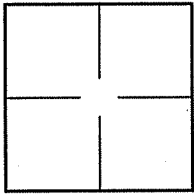
CORNER RECORD

Document Number A.P.# 038-252-03

City of CORTE MADERA

County of MARIN, California

Brief Legal Description LOT 167 PER 11 RM 22



CORNER TYPE COORDINATES (Optional)

Government Corner Control

Meander Property

Rancho Other

Date of Survey 05/30/2007

N. _____
 E. _____
 Zone _____ NAD27 NAD83
 NAD83 Epoch _____
 Elev. _____
 Vert. Datum: NGVD29 NAVD88
 Meas. Units: Metric Imperial

Corner- Left as found Found and tagged Established Reestablished Rebuilt

Identification and type of corner found: Evidence used to identify or procedure used to establish or reestablish the corner:
ESTABLISHED AND REESTABLISHED PROPERTY CORNERS OF LOT 167 PER 11 RM 22.

A description of the physical condition of the monument as found and as set or reset: SEE SHEET 2.

SURVEYOR'S STATEMENT

This Corner Record was prepared by me or under my direction in conformance with
 the Land Surveyor's Act on MAY 30 2007
 Signed Lawrence P. Doyle P.L.S. or R.C.E. No. P.L.S. 4694



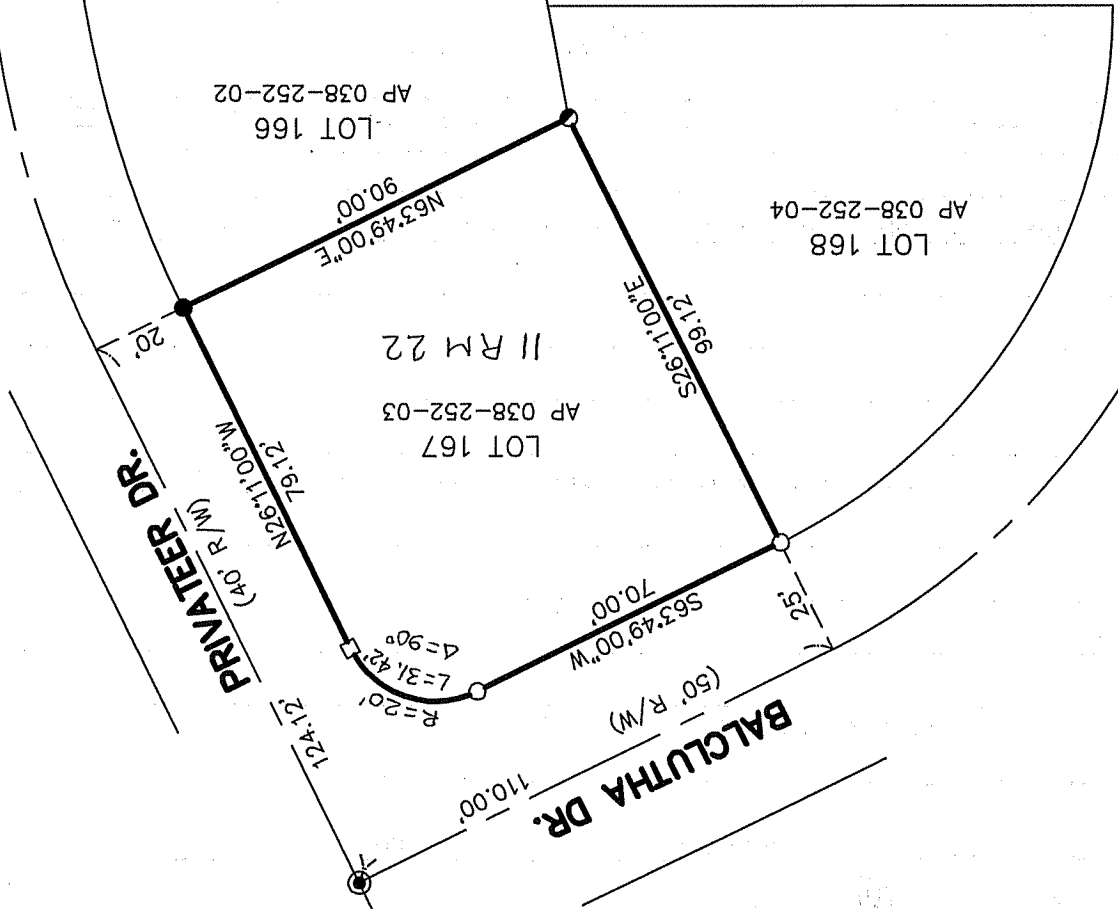
COUNTY SURVEYOR'S STATEMENT

This Corner Record was received JUNE 7, 2007
 and examined and filed JULY 12, 2007
 Signed COUNTY SURVEYOR P.L.S. or R.C.E. No. 7128
 Title [Signature]
 County Surveyor's Comment _____



CORNER RECORD
LOT 167/ 11 RM 22
 CORTE MADERA MARIN COUNTY CALIFORNIA

SCALE: 1" = 40'
 DATE: 5/30/07
 DRAWN BY: LAWRENCE P. DOYLE
 LAND SURVEYOR/CIVIL ENGINEER
 P.O. BOX 1609 MILL VALLEY CA 94942 (415-388-9585)
 DRAWING NO. 1636-07



NOTES
 1. ALL DISTANCES ARE IN FEET AND DECIMALS THEREOF.

BASIS OF BEARING
 THE BASIS OF BEARING FOR THIS SURVEY IS N26°11'00"W, BETWEEN FOUND STREET MONUMENTS, AS PER 11 RM 22.

- LEGEND**
- FOUND STREET MONUMENT
 - FOUND PIPE AND PLUG R.C.E. 30465
 - SET 3/4" PIPE AND PLUG L.S. 4694
 - SET HUB AND TAG L.S. 4694
 - SET NAIL AND TAG L.S. 4694, IN CONCRETE

