

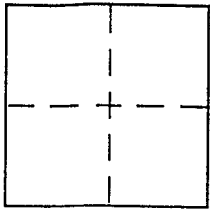
**CORNER RECORD**

Document Number APN 38-252-02

City of Carte Madera

County of Marin, California

Brief Legal Description AP No. 038-252-02 (Lot 166, 11RM22)



**CORNER TYPE**

- Government Corner  Control
- Meander  Property
- Rancho  Other
- Date of Survey \_\_\_\_\_

**COORDINATES (Optional)**

N. \_\_\_\_\_  
 E. \_\_\_\_\_  
 Zone \_\_\_\_\_ NAD27  NAD83   
 NAD83 Epoch \_\_\_\_\_  
 Elev. \_\_\_\_\_  
 Vert. Datum: NGVD29  NAVD88   
 Meas. Units: Metric  Imperial

Corner - Left as found  Found and tagged  Established  Reestablished  Rebuilt

Identification and type of corner found: Evidence used to identify or procedure used to establish or reestablish the corner:

Found std. city mons. on Privateer per 11 RM22

A description of the physical condition of the monument as found and as set or reset:

set IPs and a PK+tag, as shown, per 11 RM22

**SURVEYOR'S STATEMENT**

This Corner Record was prepared by me or under my direction in conformance with

the Land Surveyor's Act on May 27, 05

Signed [Signature] P.L.S or R.C.E. No. 30465



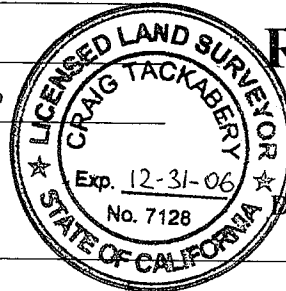
**COUNTY SURVEYOR'S STATEMENT**

This Corner Record was received JUNE 6, 2005

and examined and filed JULY 21, 2005

Signed [Signature] P.L.S or R.C.E. No. 7128

Title COUNTY SURVEYOR



**RECEIVED**

JUN 16 2005

Marin County Department of Public Works

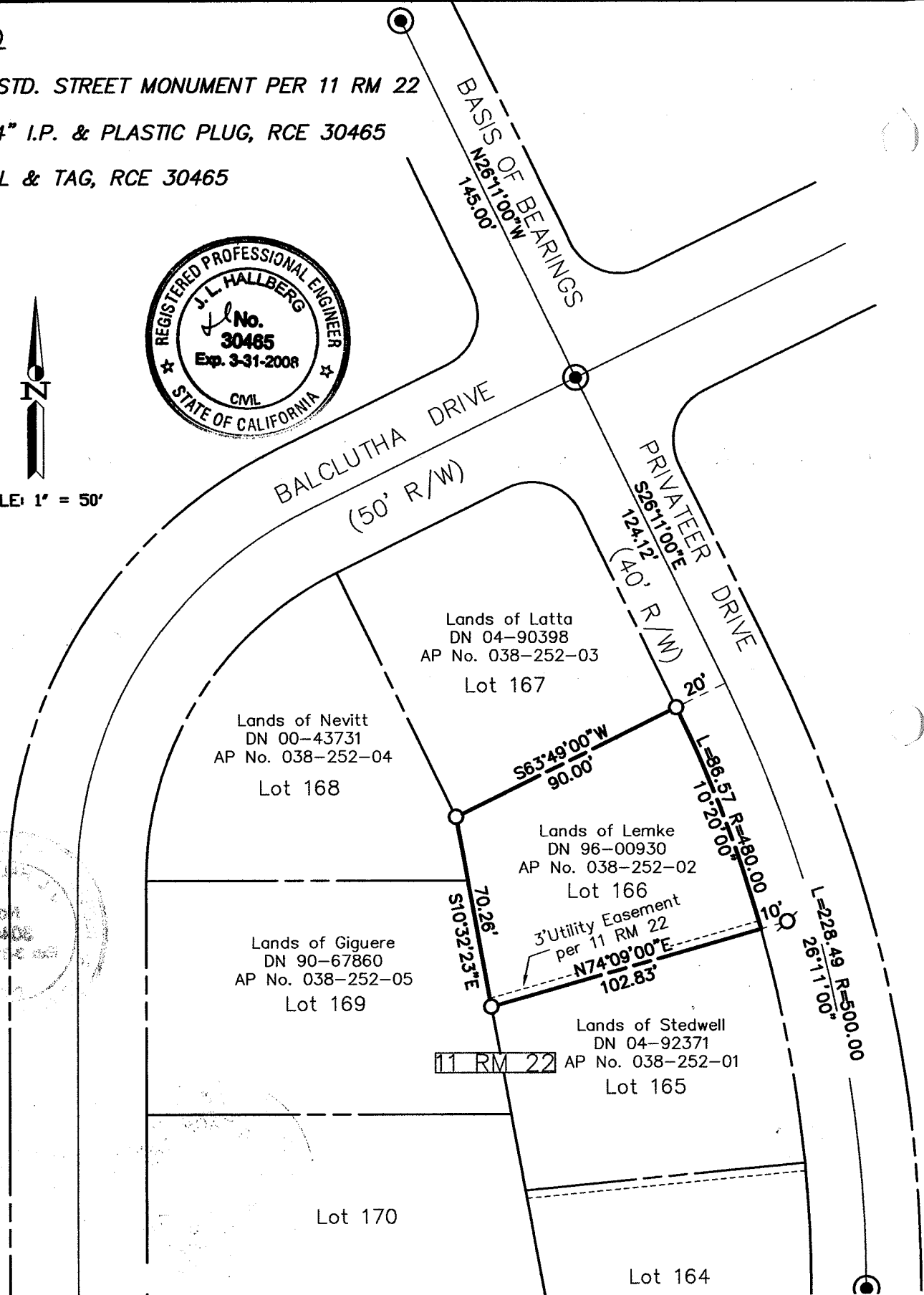
County Surveyor's Comment \_\_\_\_\_

**LEGEND**

- FOUND STD. STREET MONUMENT PER 11 RM 22
- SET 3/4" I.P. & PLASTIC PLUG, RCE 30465
- ⊗ SET NAIL & TAG, RCE 30465



SCALE: 1" = 50'



Note: All distances are in feet and decimals thereof.

SHEET	1	OF	1
SCALE:	1" = 50'	DESIGN:	MDH
DATE:	27/05/05	DRAWN:	MDH
FILE:	2005-087	CHECKED:	J.L.H

**J.L. ENGINEERING**  
 CIVIL ENGINEERS—LAND SURVEYORS  
 1539 4th ST., SAN RAFAEL, CA. 94901 (415) 457-6647

**Corner Record**  
 Lands of Lemke— 21 Privateer Drive  
 APN 038-252-02, Corte Madera, Marin County, CA